

Techniques to Support Next- Generation of Synchrophasor Technology Applications

Anamitra Pal (Anamitra.Pal@asu.edu)

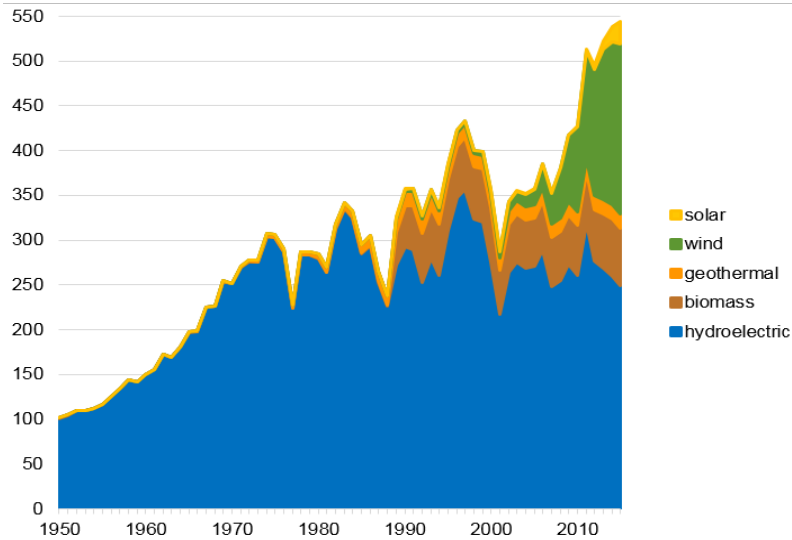
Assistant Professor, Arizona State University

April 16, 2019

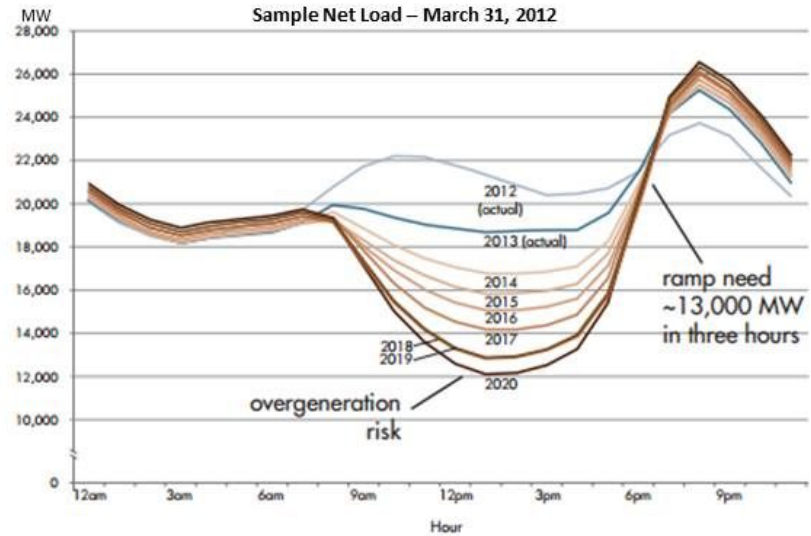
Evolving Grid – Evolving World

U.S. electricity generation from renewable energy sources, 1950–2017

billion kilowatthours



The duck curve shows steep ramping needs and overgeneration risk



(from the California Independent System Operator)



PMUs – A Window to the Future

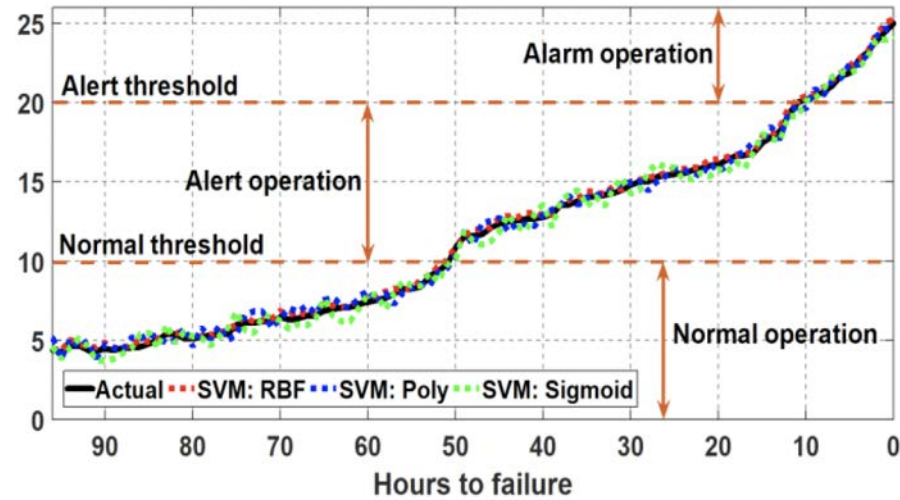
- PMUs provide insight into what is coming¹:
 - Real-Time Capabilities
 - Situational awareness
 - Equipment problem detection
 - Study-Mode Capabilities
 - Model validation
 - Renewable resource integration



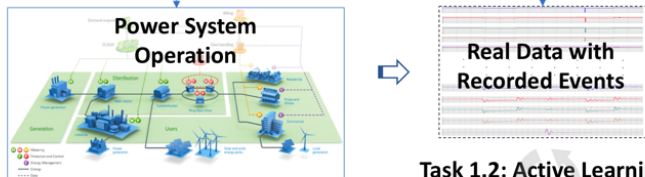
- Synchronphasor infrastructure must NOT be taken for granted:
 - Understand the information that is conveyed through the measurements
 - Perform periodic maintenance (calibration) of the associated equipment

Machine Learning – Best Bang for Your Buck

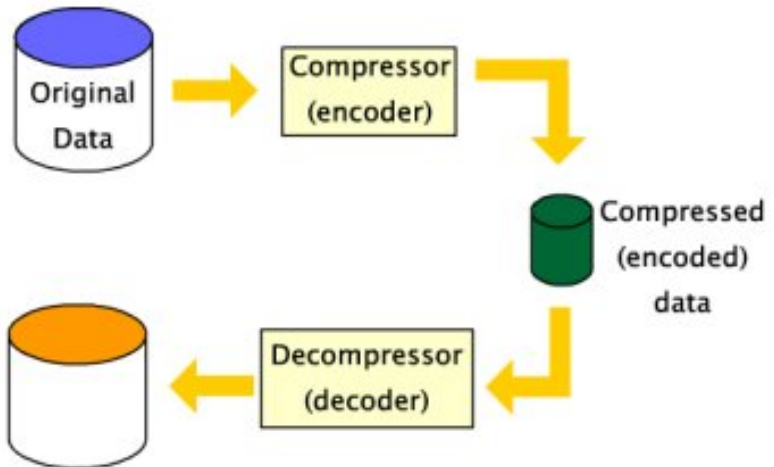
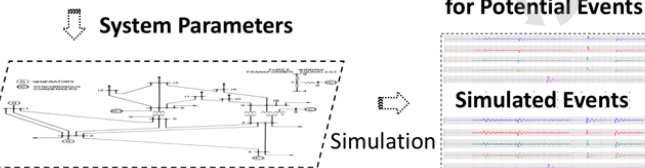
- Translate raw data into actionable information:
 - Equipment Malfunction Identification through Signature Analysis and Transfer Learning (TL)
 - Intelligent Compression Techniques for Real-time Data Sharing as well as Data Storage
 - Contingency Forecasting using Online Dictionary Learning (ODL) and Active Learning (AL)



Task 1.1: Online Representation Learning for Congestion Forecasting

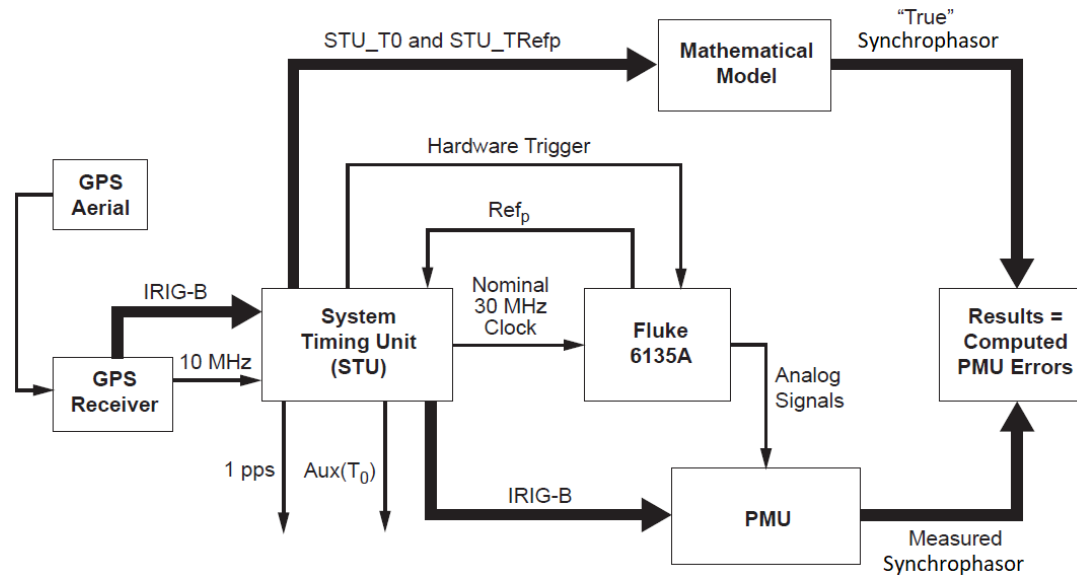
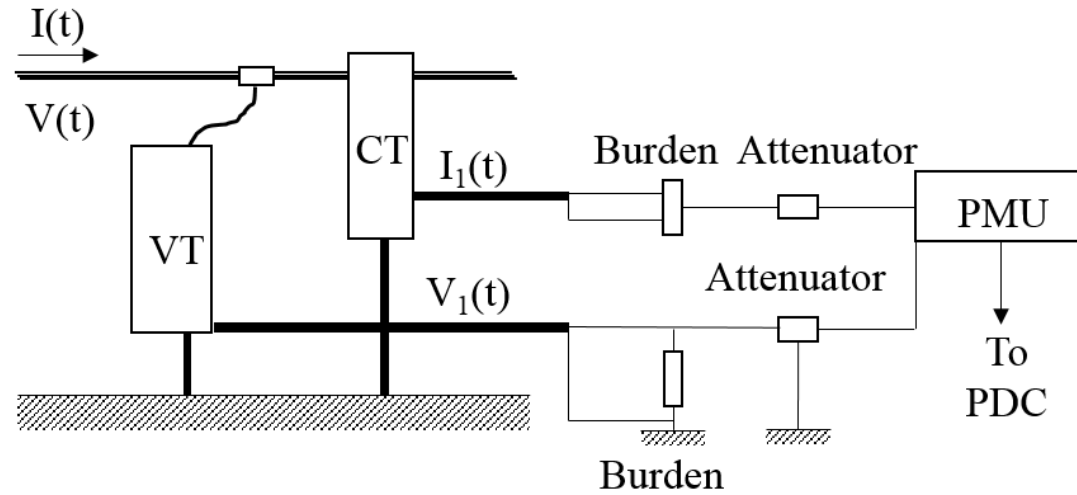


Task 1.2: Active Learning for Potential Events



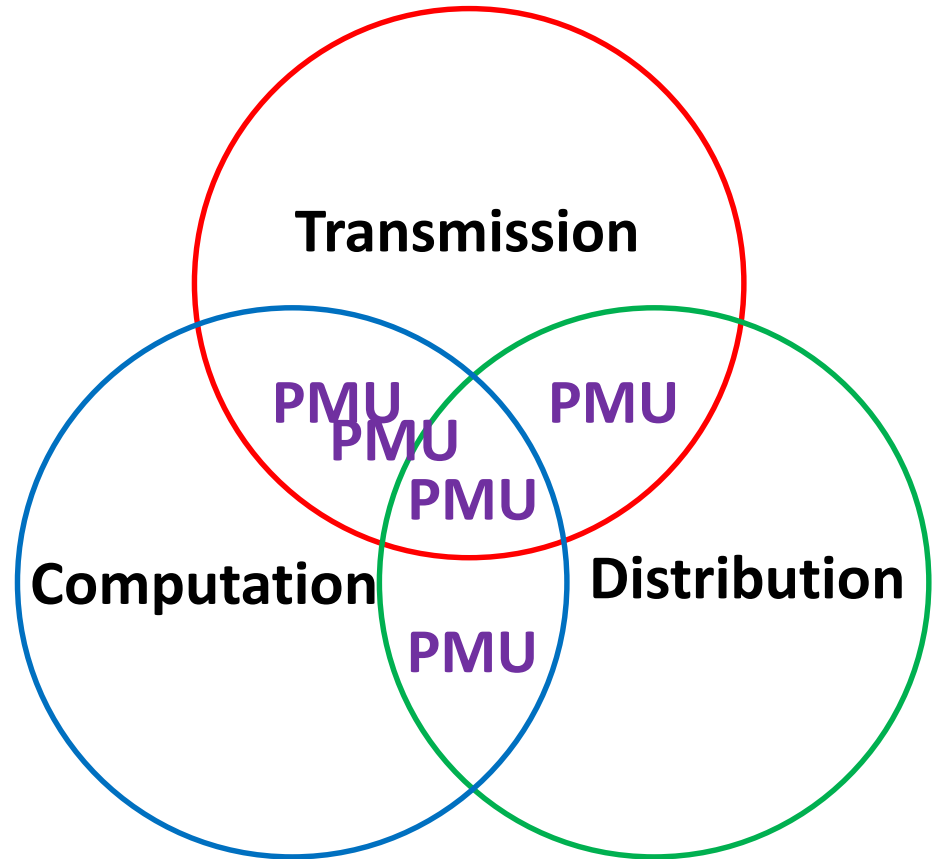
Periodic Calibration is Necessary

- **Goal:** Prevent degradation of PMU output with time and in presence of realistic errors
- Typical errors found in PMU Measurements:
 - Device error
 - Instrumentation error
- Existing PMU calibration systems can successfully calibrate PMU devices
- Instrumentation error is a function of age and system loading and is an active area of research²



Evolution of Synchrophasor Analytics

- **Transmission Related:**
 - Three-phase linear state estimator (LSE) for 500kV network of Dominion Energy
 - Software developed by EPG (RTDMS, PGDA, ...)
- **Computation Related:**
 - Synchrophasor solutions for the full transmission system
 - The PingThings Approach (High Performance Sandbox³)
- **Distribution Related:**
 - Event localization
 - Anomaly detection
 - Distribution system LSE
 - Bad data detection/correction



3. K. D. Jones, and S. Murphy, “The role of a high performance sandbox in your synchrophasor analytics pipeline,” NASPI, Albuquerque, NM, April 2018. URL: https://www.naspi.org/sites/default/files/2018-05/02_Jones_Murphy_TheRole_20180424.pdf

The Way Forward ...

- Synchrophasor technology is here to stay and grow ...
- There is NO “one size-fits all” solution with regards to data analytics for synchrophasor technology ...
- Continued interest and support is **CRITICAL!!!**

