



The Standards Based Integration Company

Systems Integration Specialists Company, Inc.

CIM Base PMU Registry



John Gillerman
SISCO, Inc.
Tel: +1-732-937-9745
Mobile: +1-732-979-9595
Email: johng@sisconet.com



Topics

- SISCO
- NASPInet
- IEC Common Information Model
- Registry Use

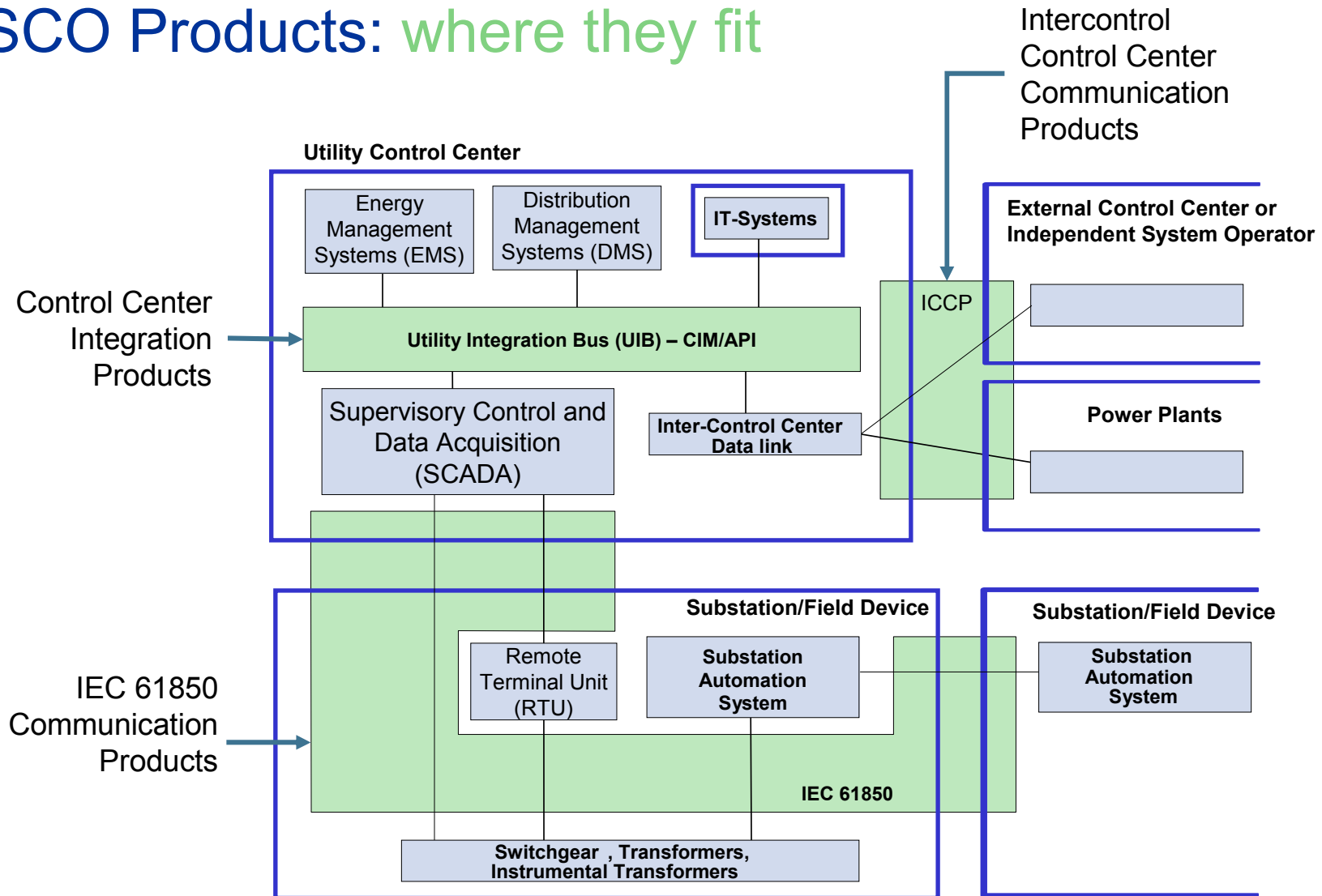


SISCO Active in Standards

- ISO
 - ❑ TC184 - ISO 9506 (MMS)
- EPRI
 - ❑ UCA 2.0 (IEEE TR1550)
 - ❑ Control Center API (Common Information Model – CIM)
- IEC Technical Committee 57 (TC57)
 - ❑ WG07 – IEC60870-6 TASE.2 (ICCP)
 - ❑ WG10 – IEC61850
 - ❑ WG13 – IEC61970 (CIM and API)
 - ❑ WG14 – IEC61968 (CIM)
 - ❑ WG15 – Communications Security
 - ❑ WG16 – Energy Market Extensions to CIM
 - ❑ WG17 – Distributed Resources
 - ❑ WG19 – TC57 Harmonization
- OPC Foundation
 - ❑ Unified Architecture



SISCO Products: where they fit





SISCO Products - Communications

- IEC61850 Substation Automation
 - ❑ Protocol source code for OEMs: MMS-EASE Lite
 - ❑ AX-S4 MMS (“Access for MMS”) OPC interface for plug-in access to IEC61850 for Windows applications.
 - ❑ Unified Analytic Platform for real-time analytics using IEC GOOSE
- ICCP-TASE.2 for Intercontrol center communications and power plant dispatching:
 - ❑ ICCP Development Tools: for OEMs to embed ICCP into their applications and devices
 - ◆ ICCP-TASE.2 Extensions for MMS-EASE Lite (Source Code)
 - ◆ ICCP Toolkit for MMS-EASE (Binary Object Library)
 - ❑ AX-S4 ICCP (“Access For ICCP”) OPC interface for plug-in access to ICCP for Windows applications



SISCO Products - Integration

- Utility Integration Bus (UIB)
 - Electric utility specific standards based extensions for off-the-shelf commercial middleware
 - Provides IEC T57 and IntelliGrid standard support enabling extension of EAI, BPI, BPM, and Enterprise Information Integration (EII) into the operations functions of utilities.
 - IBM WebSphere
 - Other JMS based middleware can be supported
 - Products
 - Development tools enabling standards based application adapter development
 - Deployment tools for off-the-shelf integration:
 - ◆ Adapters



SISCO Products for the OSIssoft PI System

- AX-S4 ICCP
 - Preferred OSIssoft interface for ICCP-TASE.2
- AX-S4 MMS
 - Preferred OSIssoft Interface for IEC 61850
- COMTRADE Utility
 - Retrieves IEEE COMTRADE format disturbance and oscillography files from substation devices and stores them into the PI archive
- UIB Adapter for PI
 - Empowers the PI environment with support for the Common Information Model (CIM), the standard API/Services, and SOA middleware.
- Unified Analytic Platform for PI
 - Real-time analytic platform for wide are remedial action using IEC 61850 GOOSE, PMU data, and other real-time streams on the OSIssoft PI System.



Some SISCO Customers

End Users

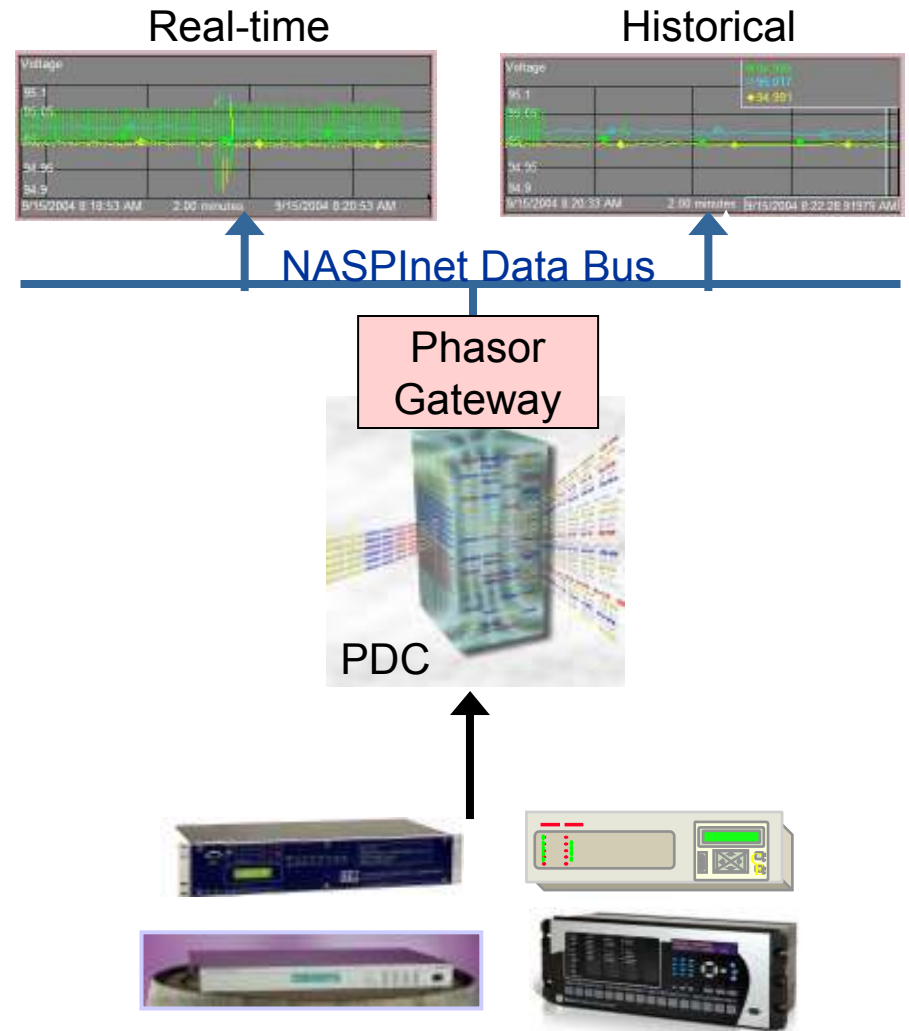
- San Diego Gas & Electric
- Southern California Edison
- Sacramento Municipal Utility District
- US Army Corps of Engineers
- TXU Energy Delivery
- DTE Energy
- Long Island Power Authority
- Xcel Energy
- American Electric Power
- Tennessee Valley Authority
- Centerpoint Energy
- EDF
- Shanghai Municipal Power Authority
- Korean Electric Power Company
- ETSA Utilities
- General Motors
- Boeing
- US Postal Service

OEMs

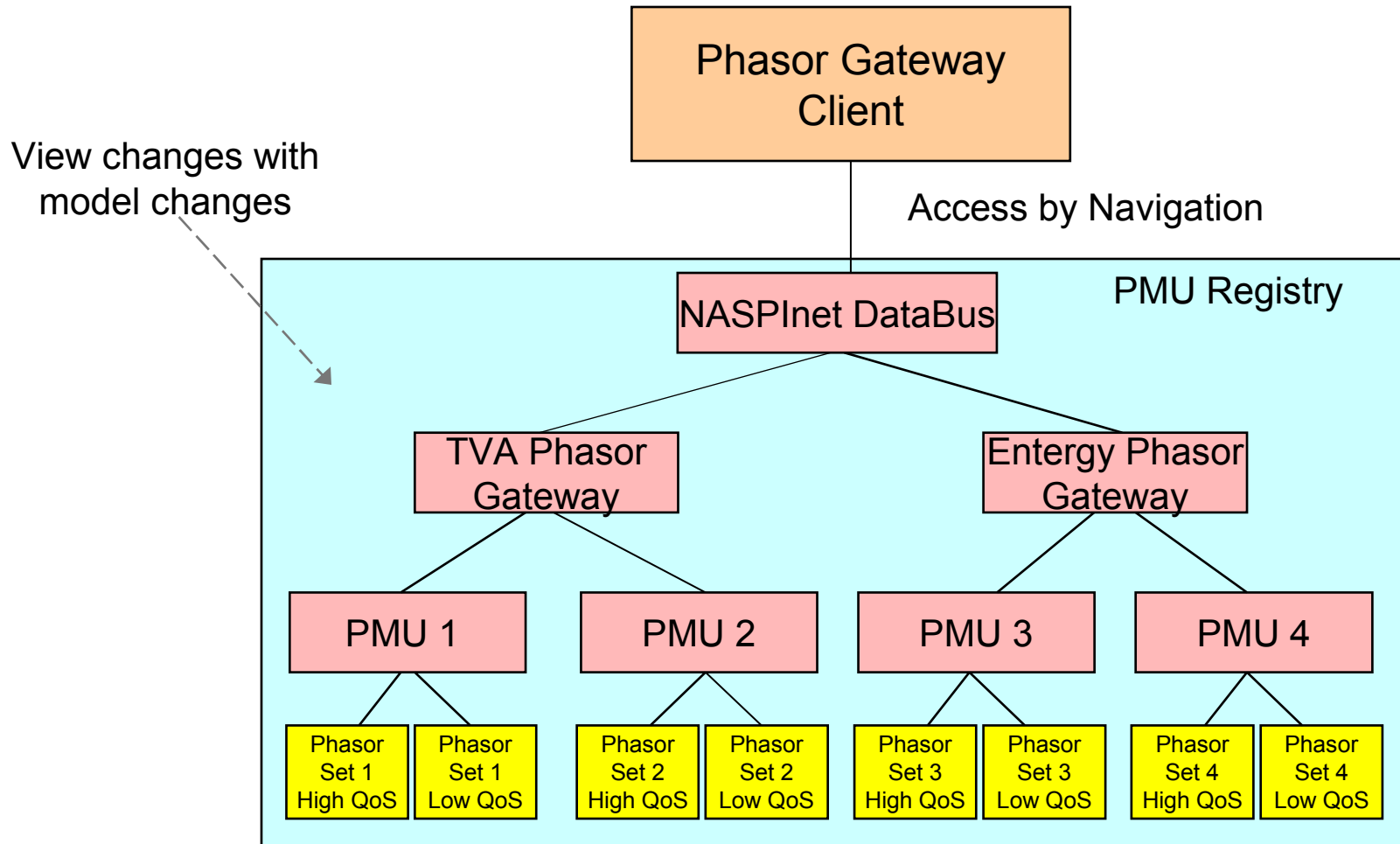
- ABB
- AREVA T&D
- General Electric
- Siemens
- Intergraph
- Power Costs
- OSIsoft
- Dranetz/BMI
- Telvent
- LS Industrial Systems
- Toshiba
- Schweitzer Engineering Labs
- Reinhausen
- Shandong Luneng
- Sifang Automation
- Doble Engineering
- XJ Electric
- ...many resellers and integrators

NASPI Architecture

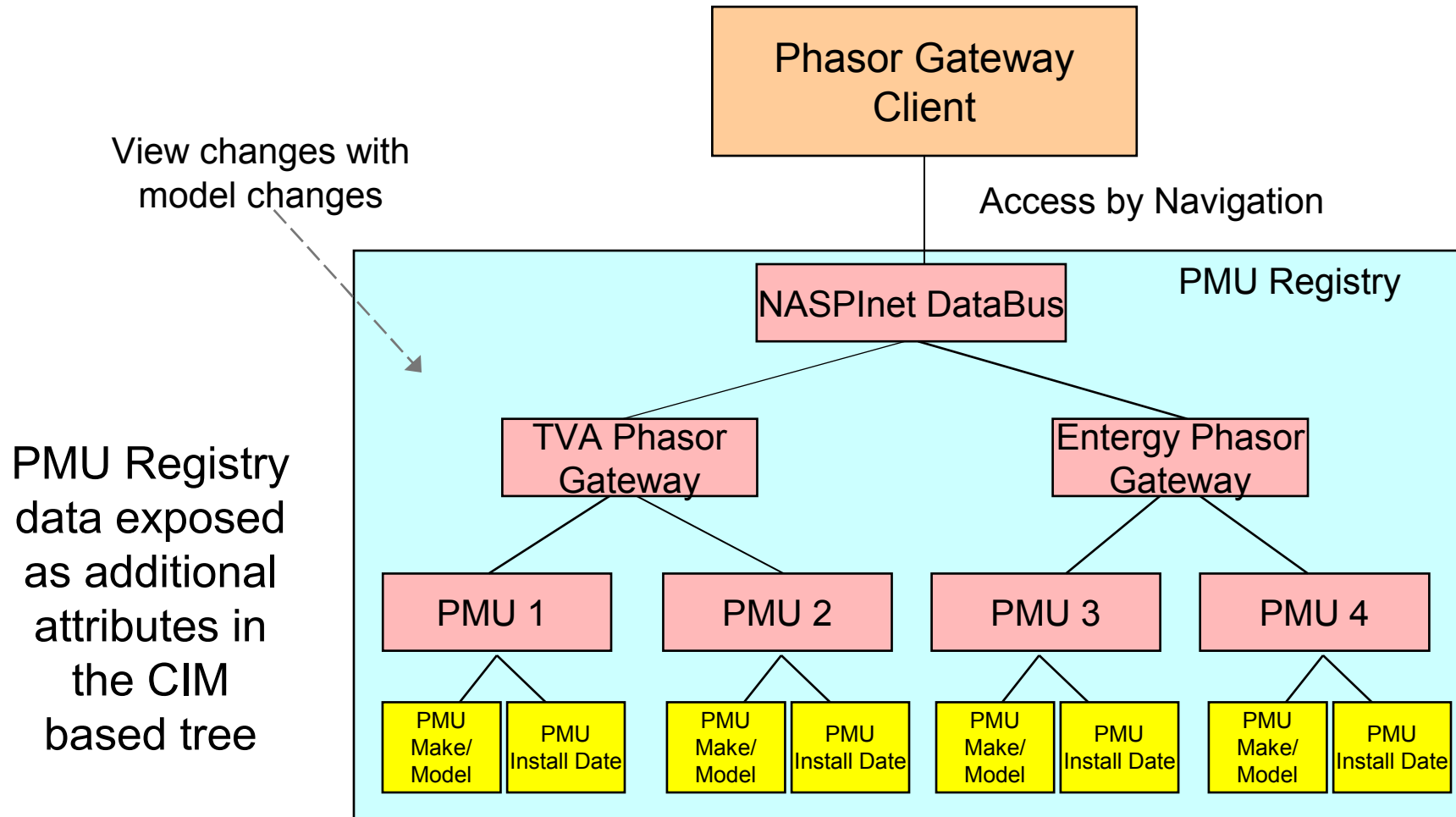
- Use IEC 61850 90-5/C37.118 multicast for current phasor data .
- Use OPC API to isolate applications from the particulars of the NASPInet database protocols and services. (PDC's and archive require native 90-5 and C37.118 support)
- Use IEC 61970 OPC UA Web Services for historical phasor data as well as registry data, alarms, network model data and for NASPInet Data Bus Configuration.
- Expose merged phasor registry data with a CIM topology model.



Current PMU Data Within The Context Of A CIM View

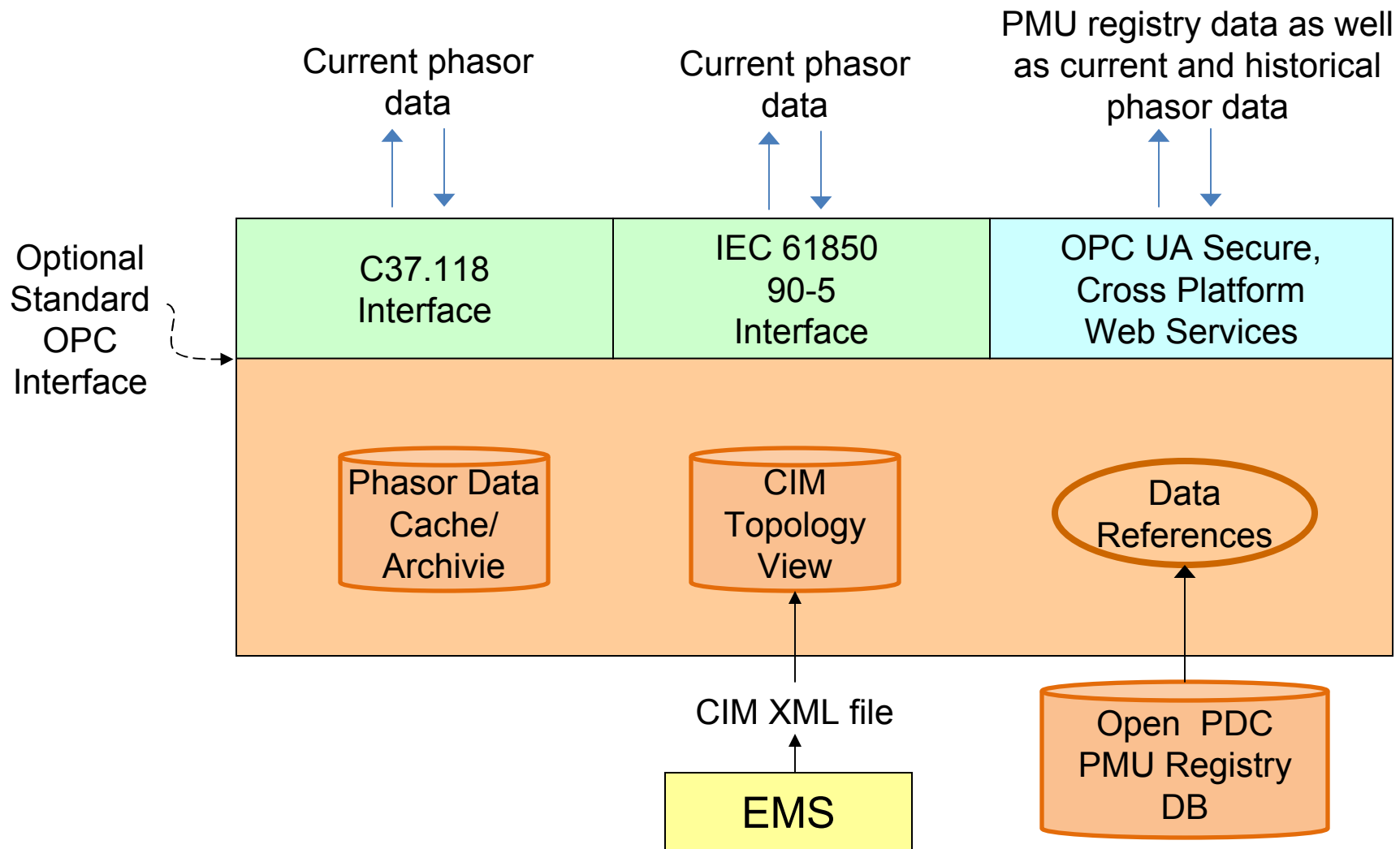


PMU Registry Data Within The Context Of A CIM View



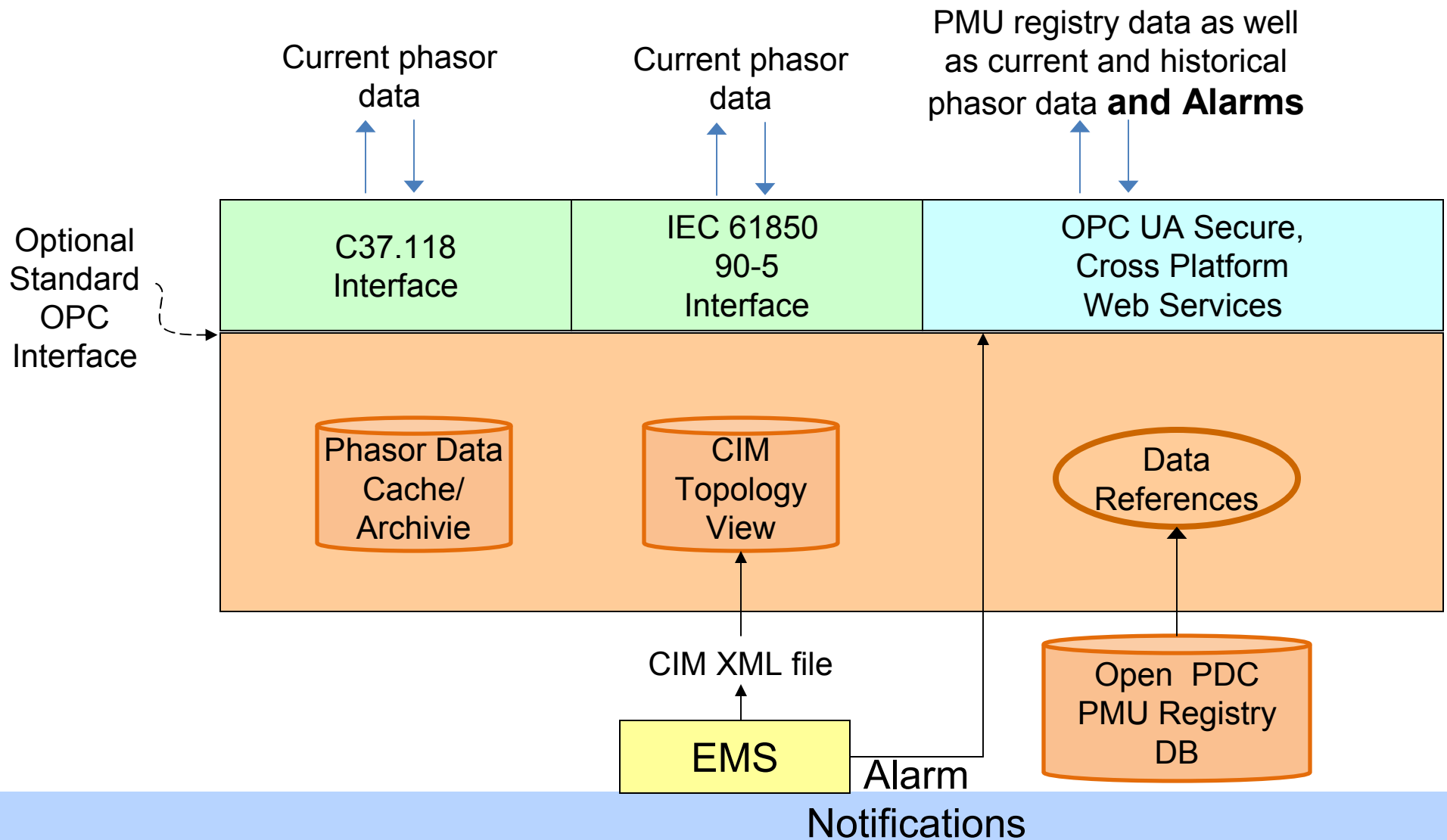


Example Based Phasor Gateway/PDC/Archive Architecture

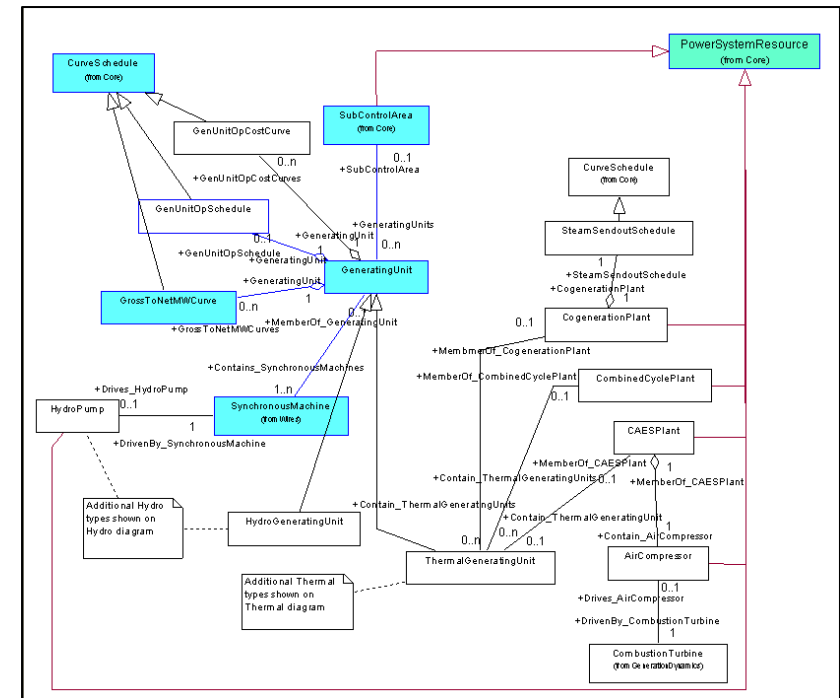
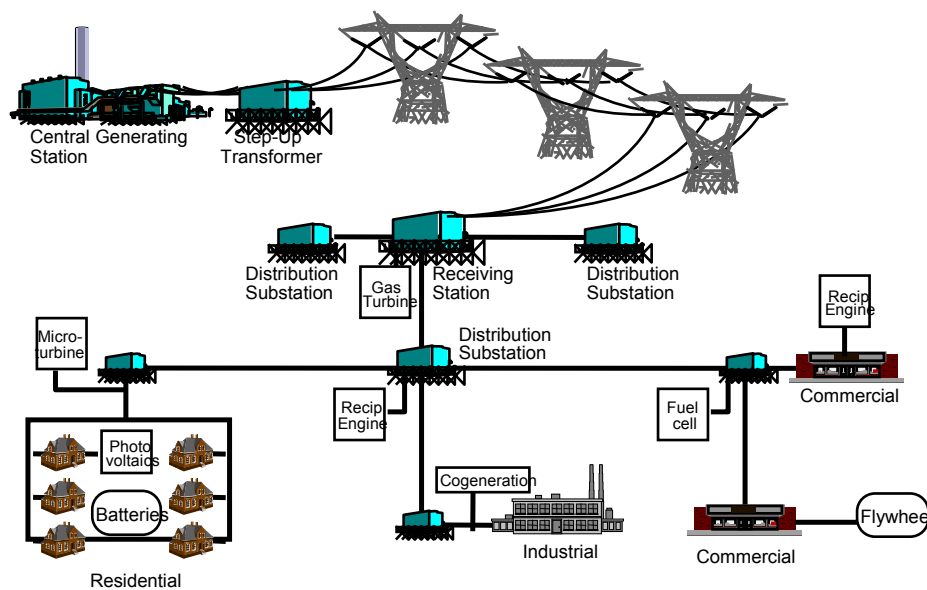




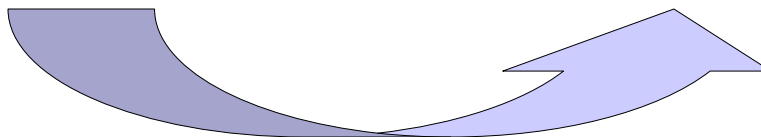
OPC UA Supports Model Driven Alarming (not in demo)



Common Information Model (CIM) is an object-oriented information model of the power system



UML – Unified Modeling Language

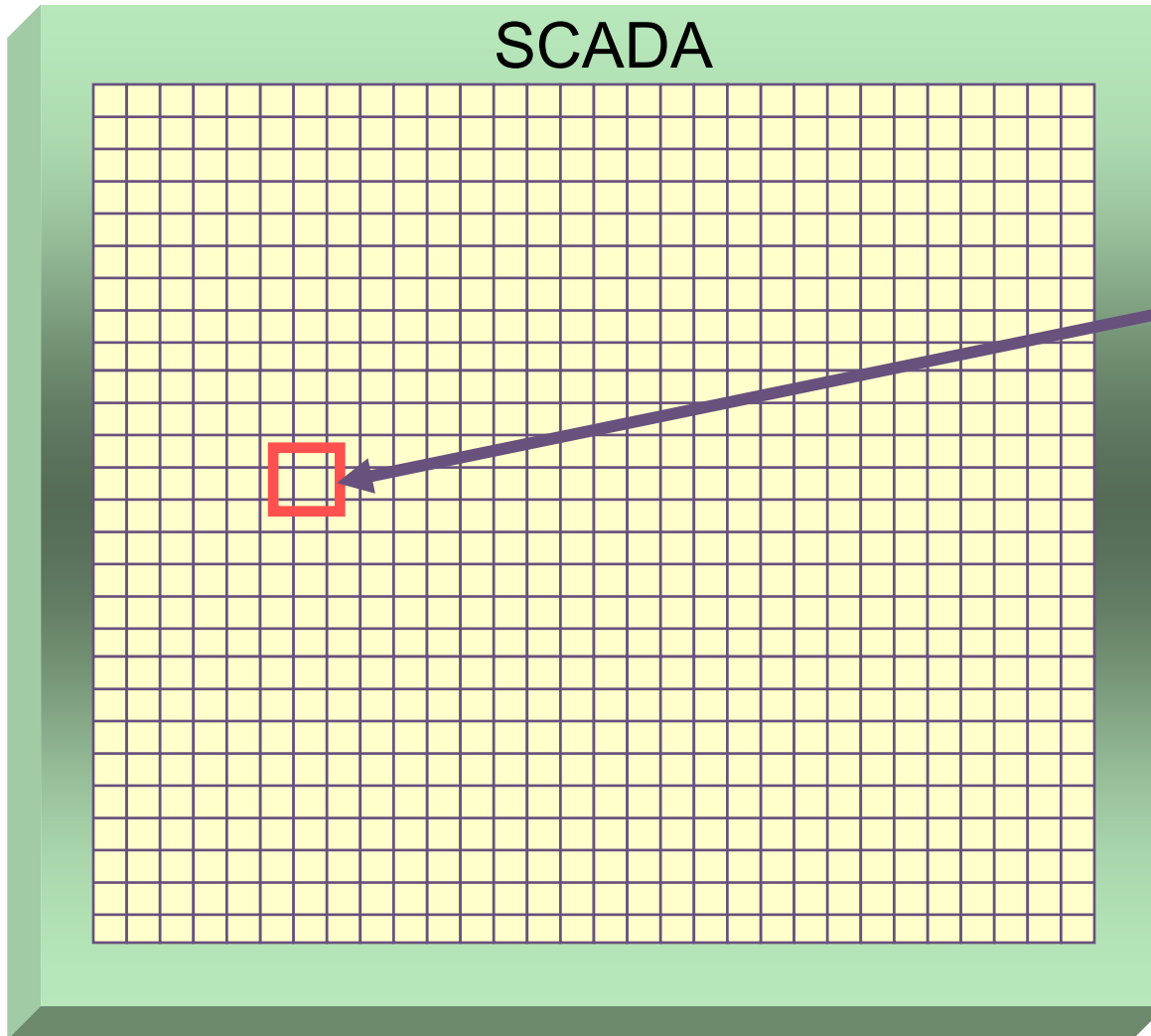




Benefits of Models

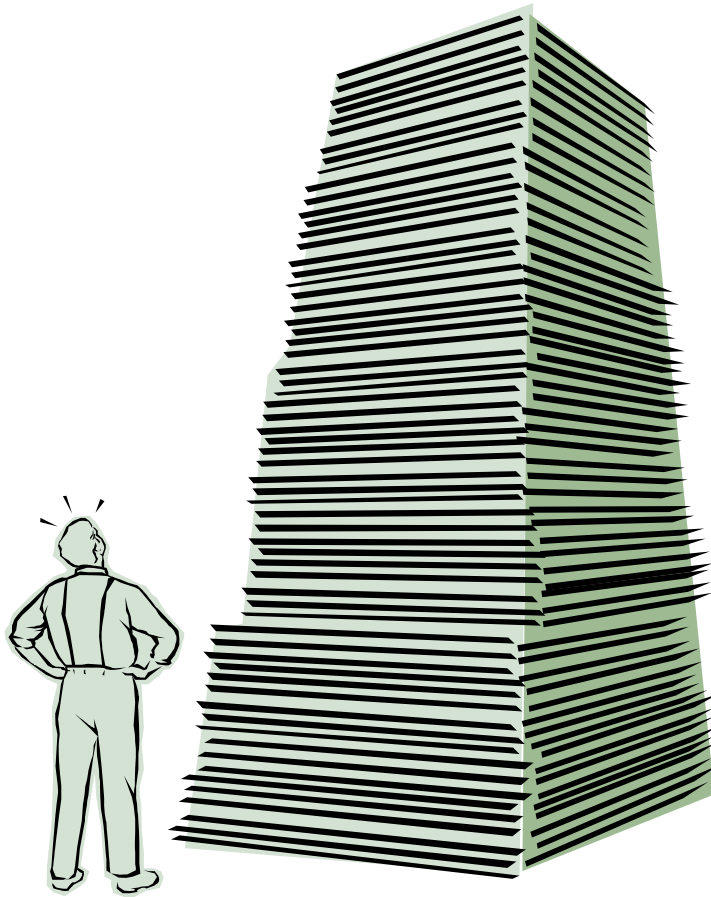
- Models give context and meaning to data improving integration and interoperability.
- The information contained in the model enables automation of setup and maintenance tasks.
- Model aware applications can be made independent of the data.

Legacy Data Model – Data is Referenced by Tag



I need the primary current
of the 345KV transformer
in the airport substation

How do users find this today?



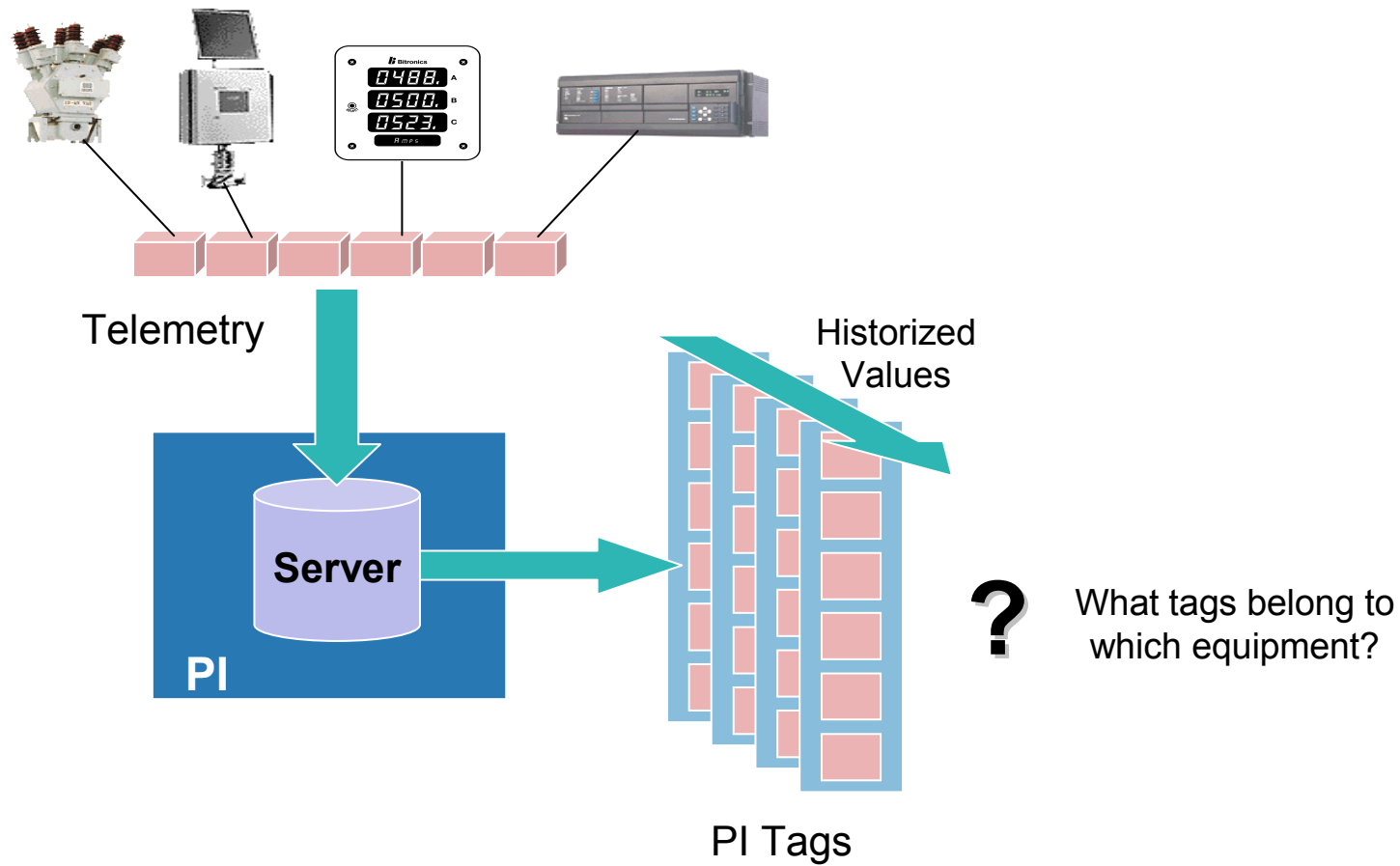
With lots of paper documentation and manual maintenance effort subject to manual error detection and correction.



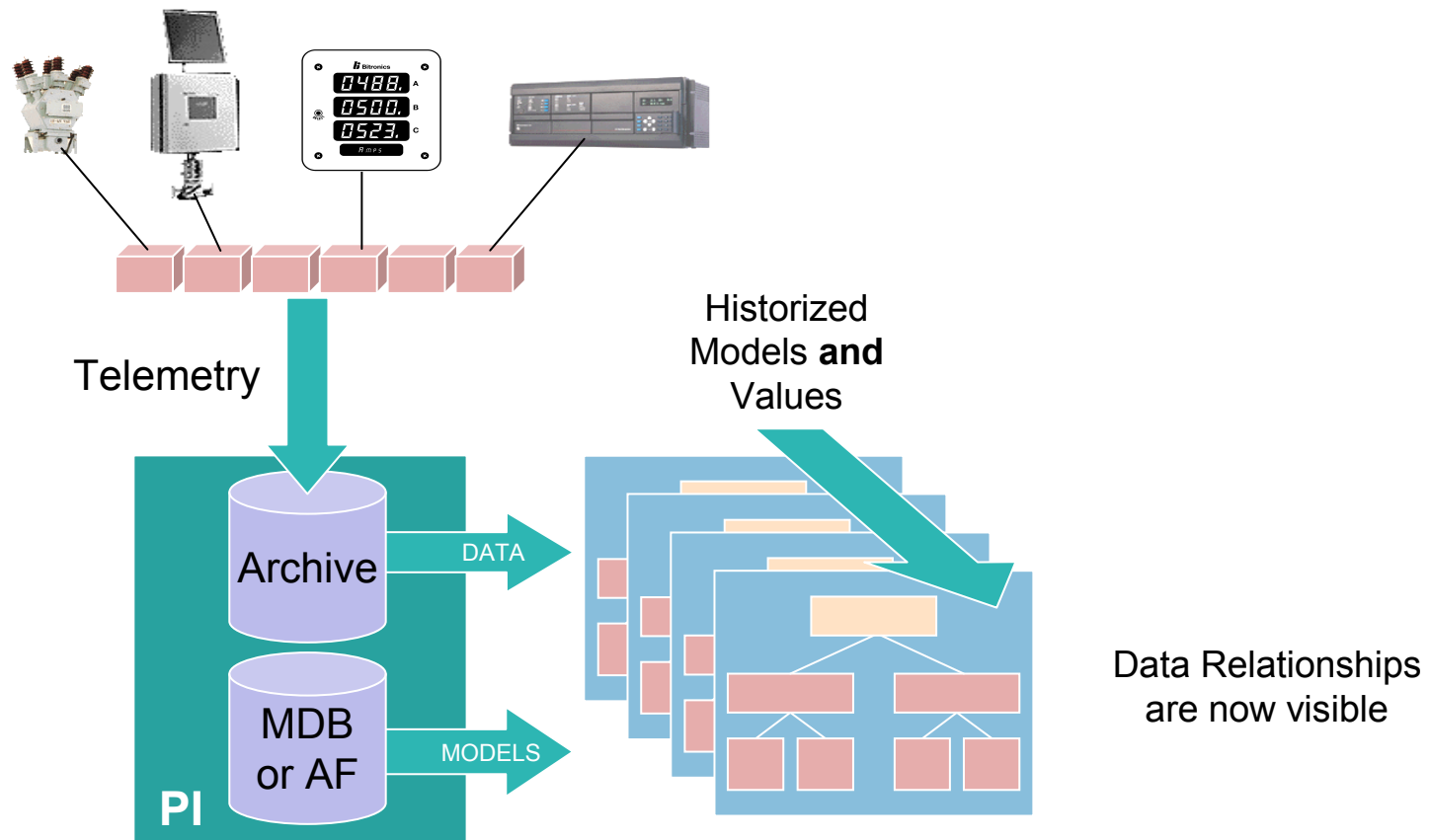
SISCO UIB Adapter for PI

- Brings power system models to the OSIsoft PI archive system
- Allows PI data to be viewed in the context of the power system model within the PI application environment
- Supports the EPRI CIM model or any user specific model via XML
- Includes OPC Server and Client Adapters:
 - PI access to any UIB data source
 - UIB clients can access PI data
- Can be used with or without UIB for external applications

Tag Based Access

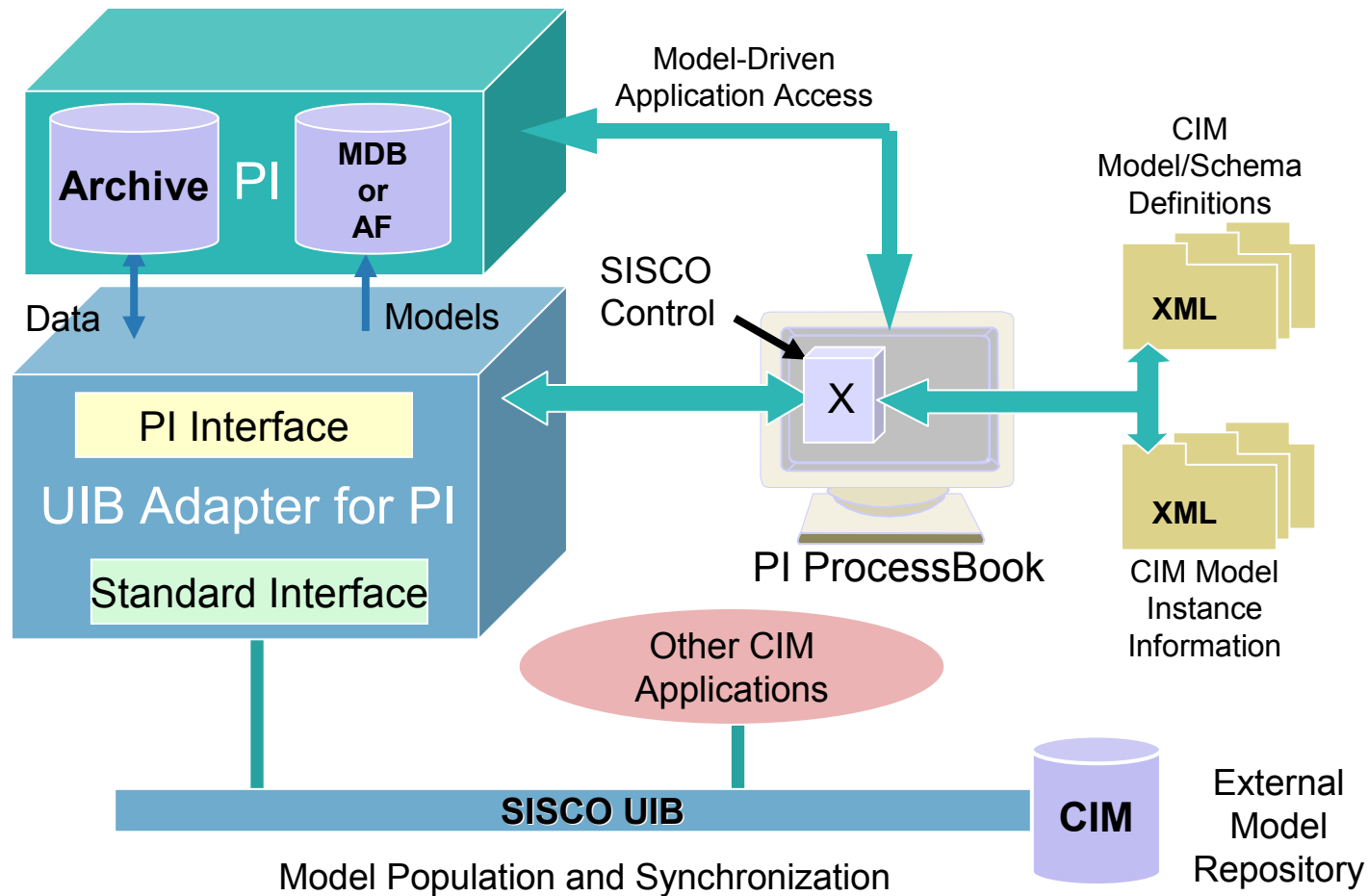


CIM Based Data Access





UIB Adapter Application

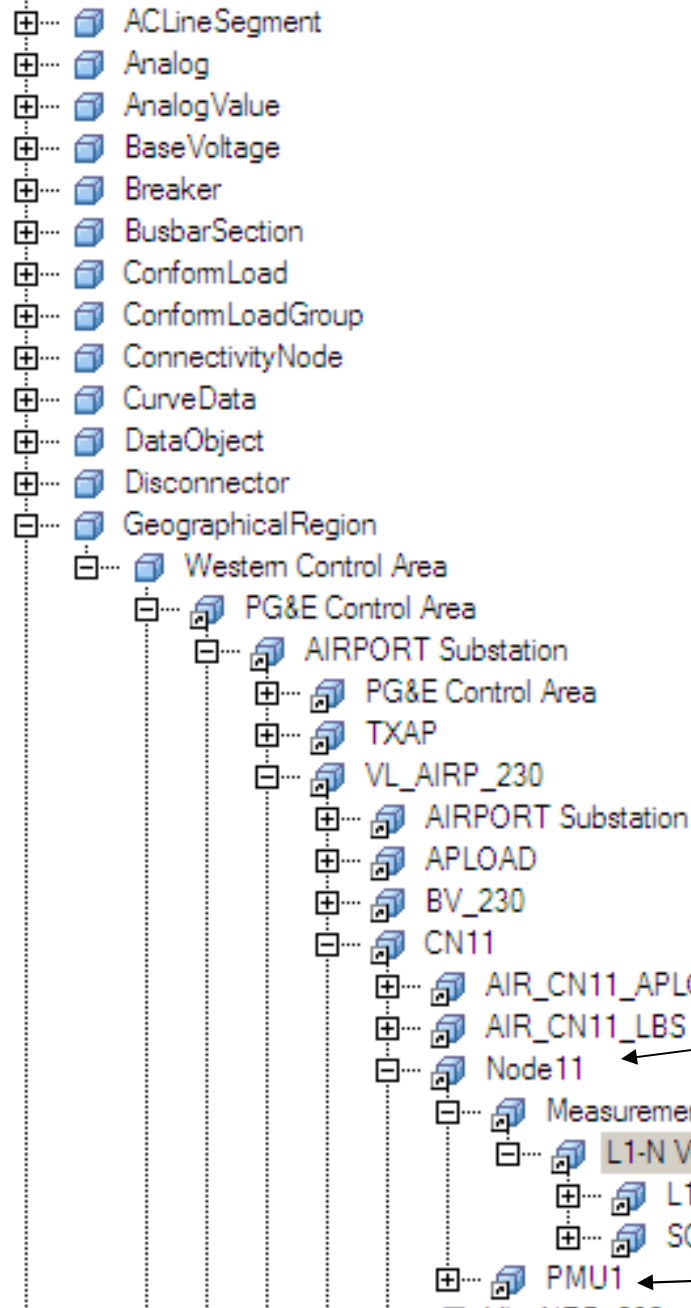




SMS

Layers

ClassView



CIM data from a
CIM XML file

Node record from the Open
PDC PMU Registry DB

CIM Measurement Value containing
current and historical phasor data.

Device record from the Open
PDC PMU Registry DB



The Standards Based Integration Company

Systems Integration Specialists Company, Inc.

Thank You

John Gillerman
SISCO, Inc.
Tel: +1-732-937-9745
Mobile: +1-732-979-9595
Email: johng@sisconet.com

