

Palantir x NASPI:

Improving Grid Resiliency by Connecting Analytics and Operations



Palantir builds the world's leading software platforms for data-driven operations and decision-making.

OUR HISTORY

- Mission to empower the world's most important institutions
- Focused on driving outcomes at scale
- Originated in anti-terrorism and defense, now serving 50+ industries
- Foundry delivers immense value across industries by making data actionable

FOUNDED

2003

PUBLIC OFFERING

2020

GLOBAL EMPLOYEES

3,500+

GLOBAL HQ

Denver, CO, USA

OUR CLIENTS



SOFTWARE PARTNERS

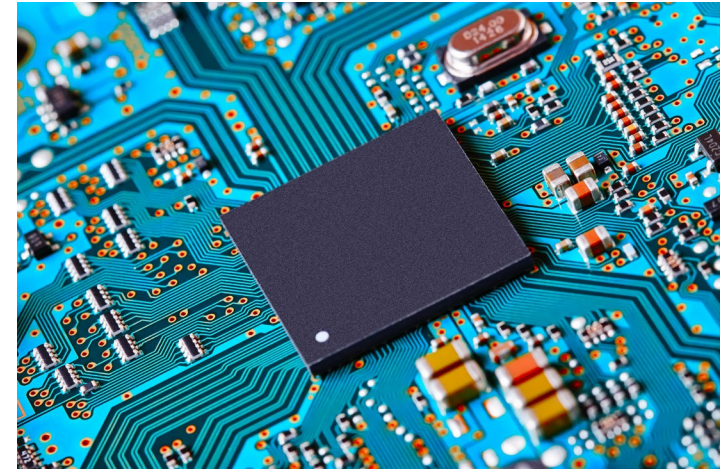
AWS Azure Google Cloud Platform PWC IBM Accenture

Industries Served

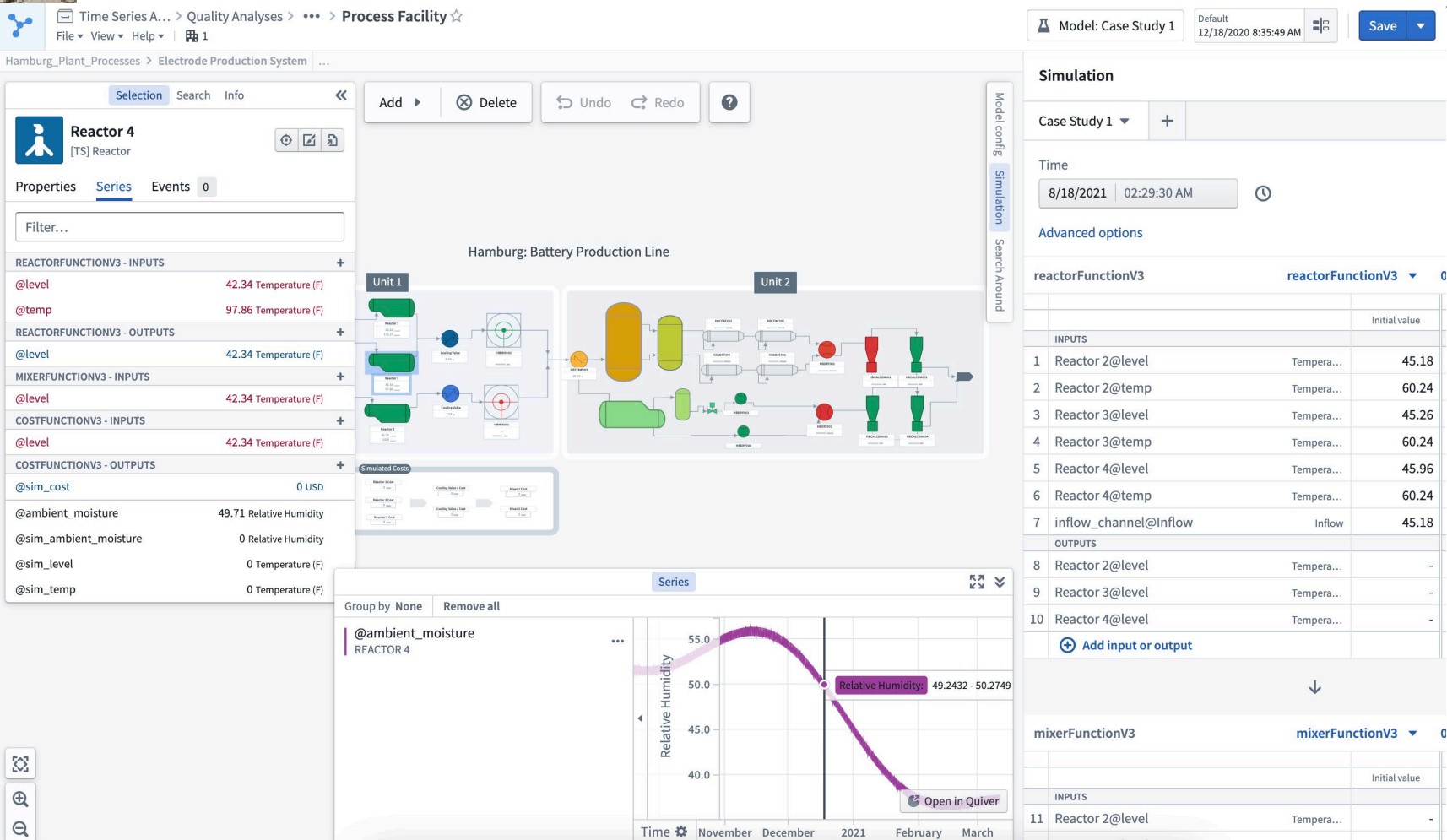
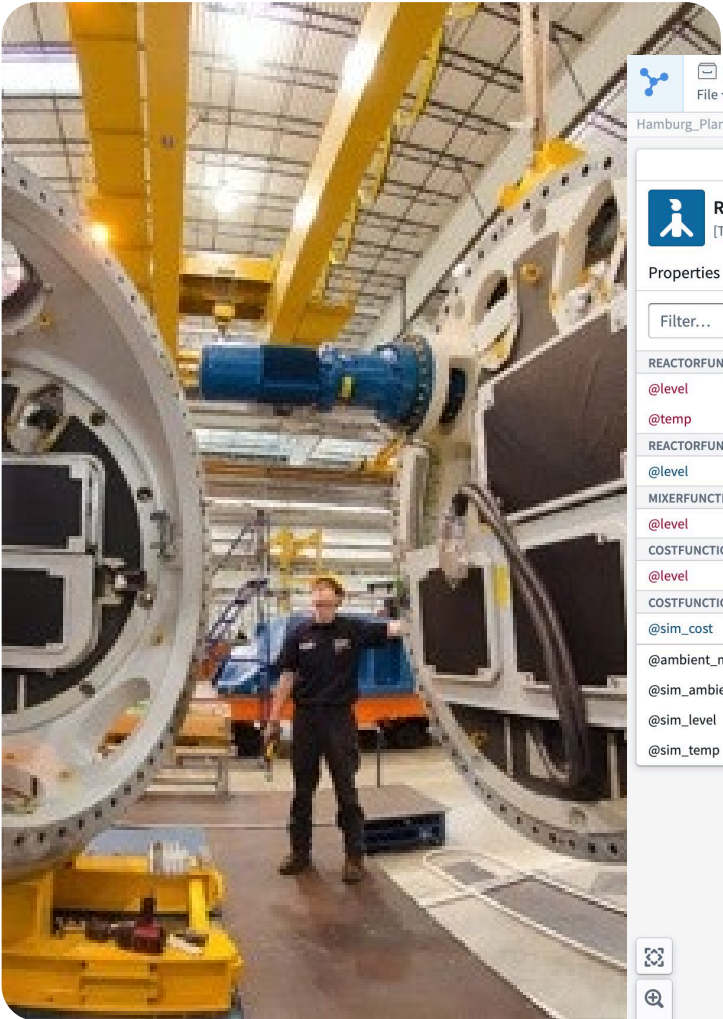
Automotive / Aviation / Chemicals / Consumer Products / Cybersecurity / Energy

Financial Services / Healthcare / Insurance / Manufacturing / Media / Mining / Pharma

Retail / Shipping / Supply Chain and Logistics / Telecom and Infrastructure / Utilities



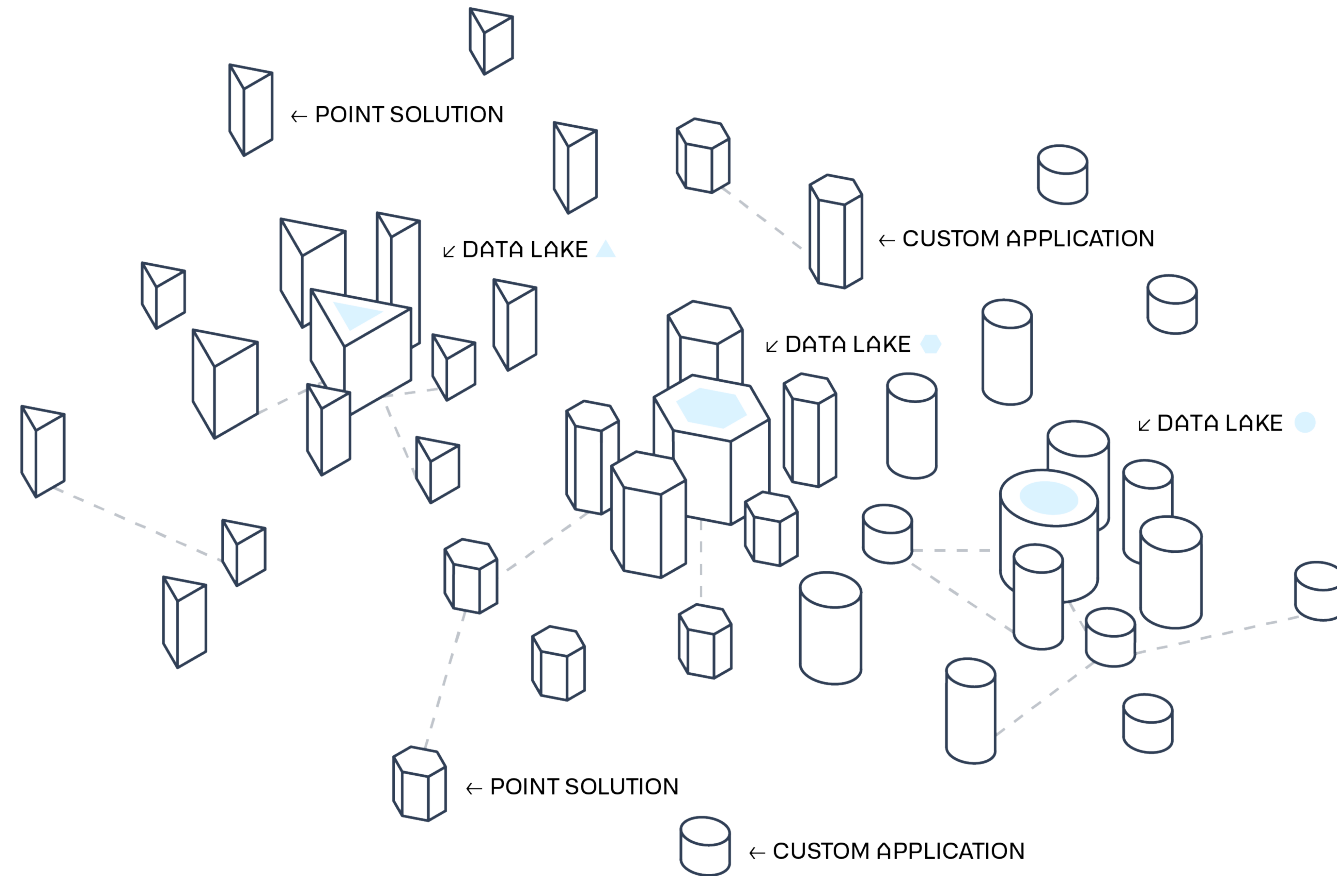
Demo: Maintenance Optimization & Production Quality





Learnings across Industries

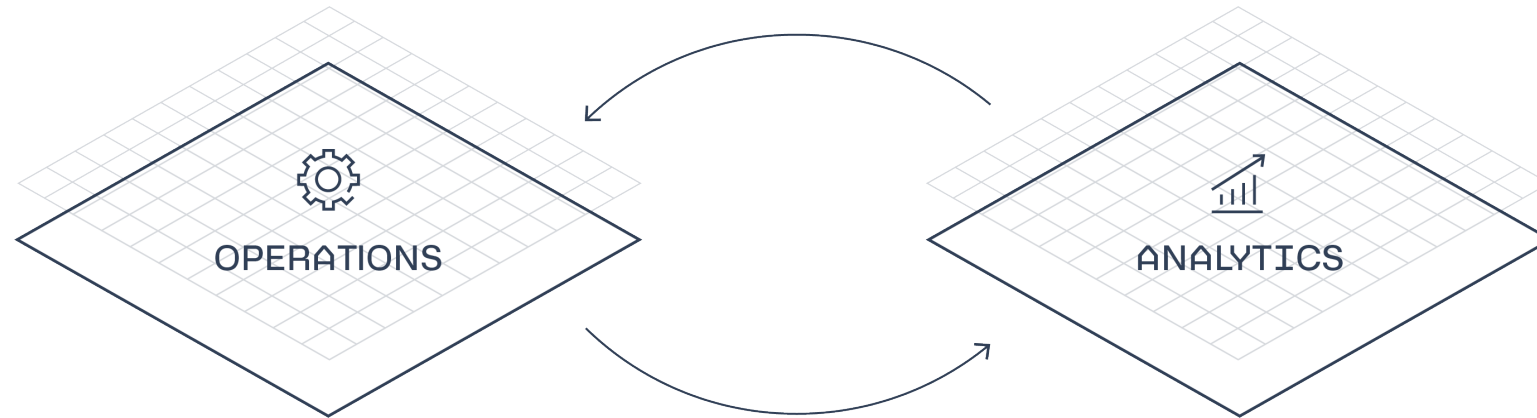
Observation 1: Data silos





Learnings across Industries

Observation 2: Disconnect between analytics and operations





The Solution

Operational Connectivity



Palantir Foundry integrates data, analytics, and operations

Assembly Line Paradigm

One-way linear flow of data and information

Strict data producer / data consumer paradigm

Analytic insights address discrete challenges, but decisions are not fed back

Time-intensive and often manual data integration and implementation

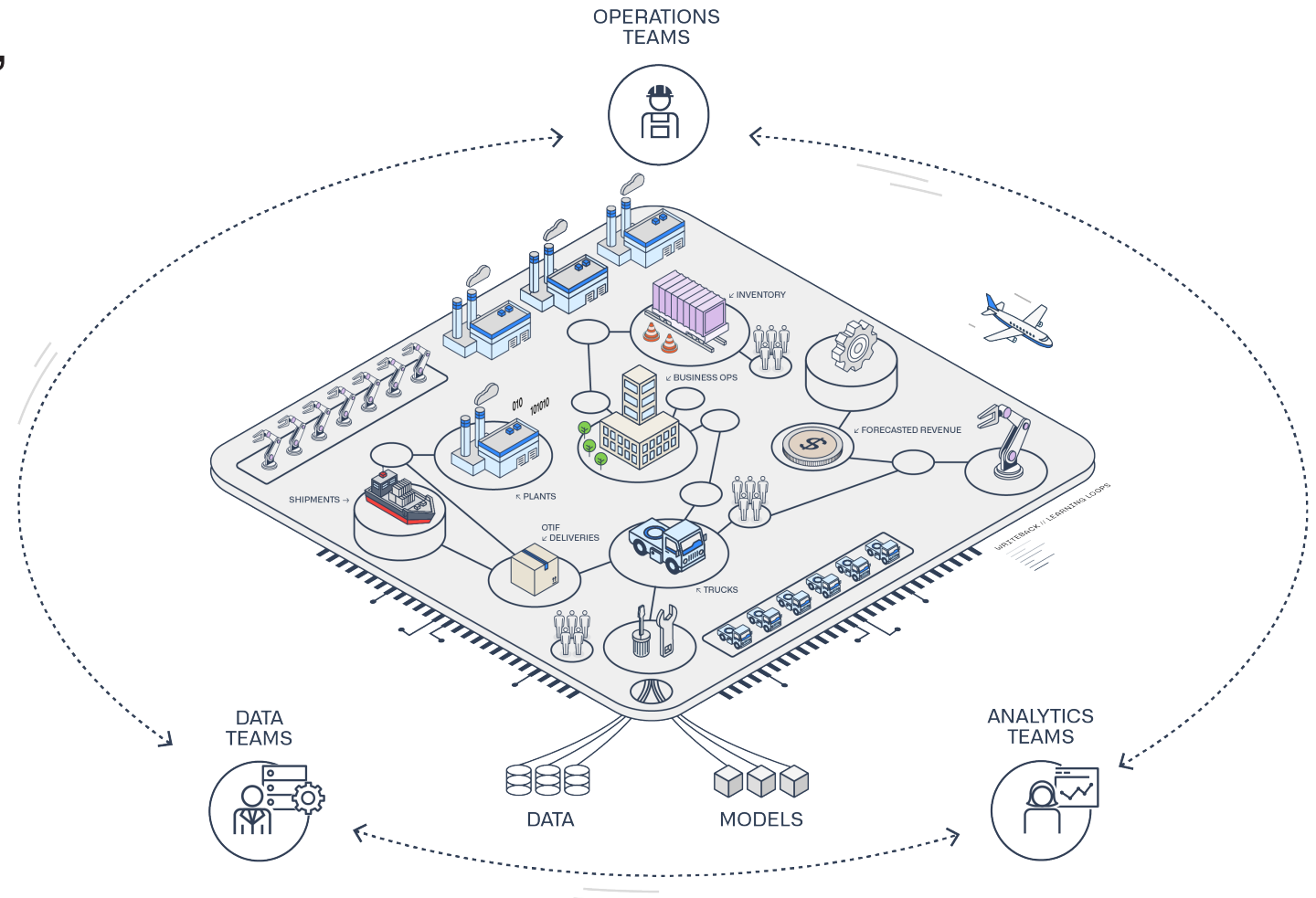
Closed Loop Operations

Collaborative, many-to-many flow of data and models

Everyone is a producer; everyone is a consumer

Platform captures decisions, and makes them available to data and analytics teams

Automated software-defined integrations, with lineage from data to decision



- Major opportunity in new data sources, analytic approaches
- Apply learnings from other industries – build a feedback loop between data integration, analytics at scale, and operations
- Quick prototyping needed to experiment with new approaches
- Data-driven operating platforms are a key part of the solution
- **For further discussion, feel free to reach out to hgurule@palantir.com**

