



synaptec



Transient and CPOW monitoring for renewable generation connections

Dr Steven Blair

steven.blair@synapt.ec



The good news...

Over 80% of new US generation capacity in 2021 from **renewables**

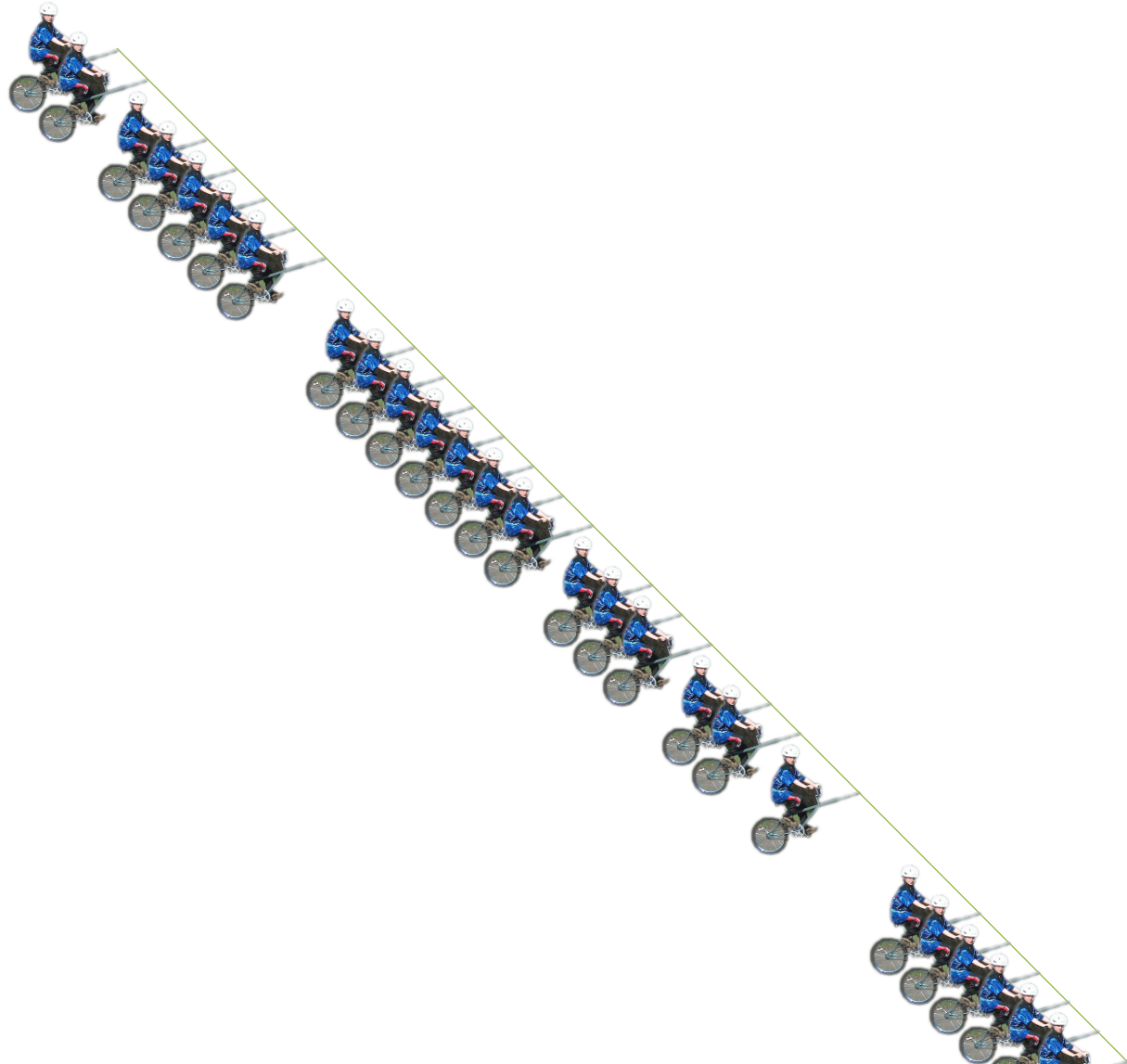
Conventional
power system...



Modern power systems

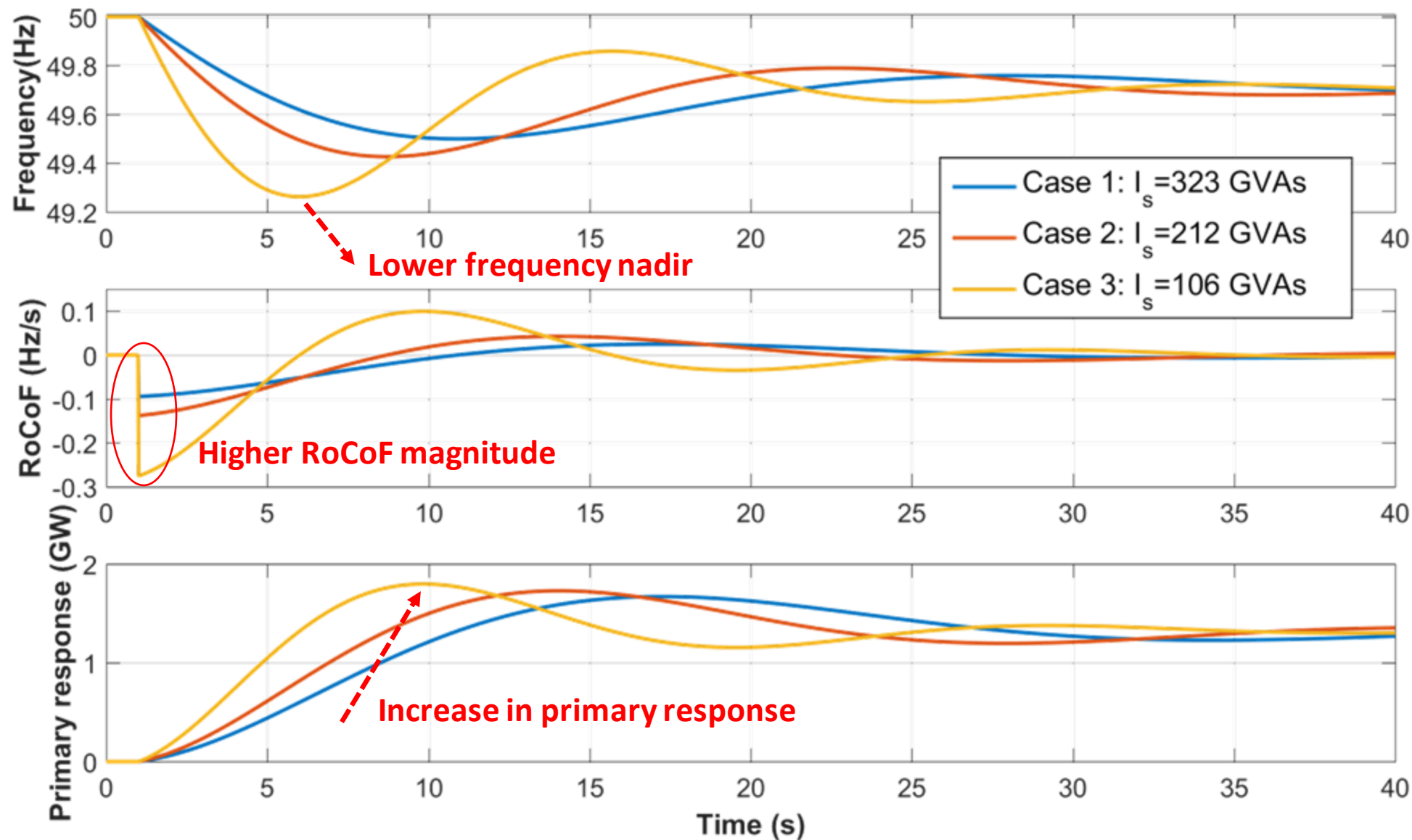


Future power systems...





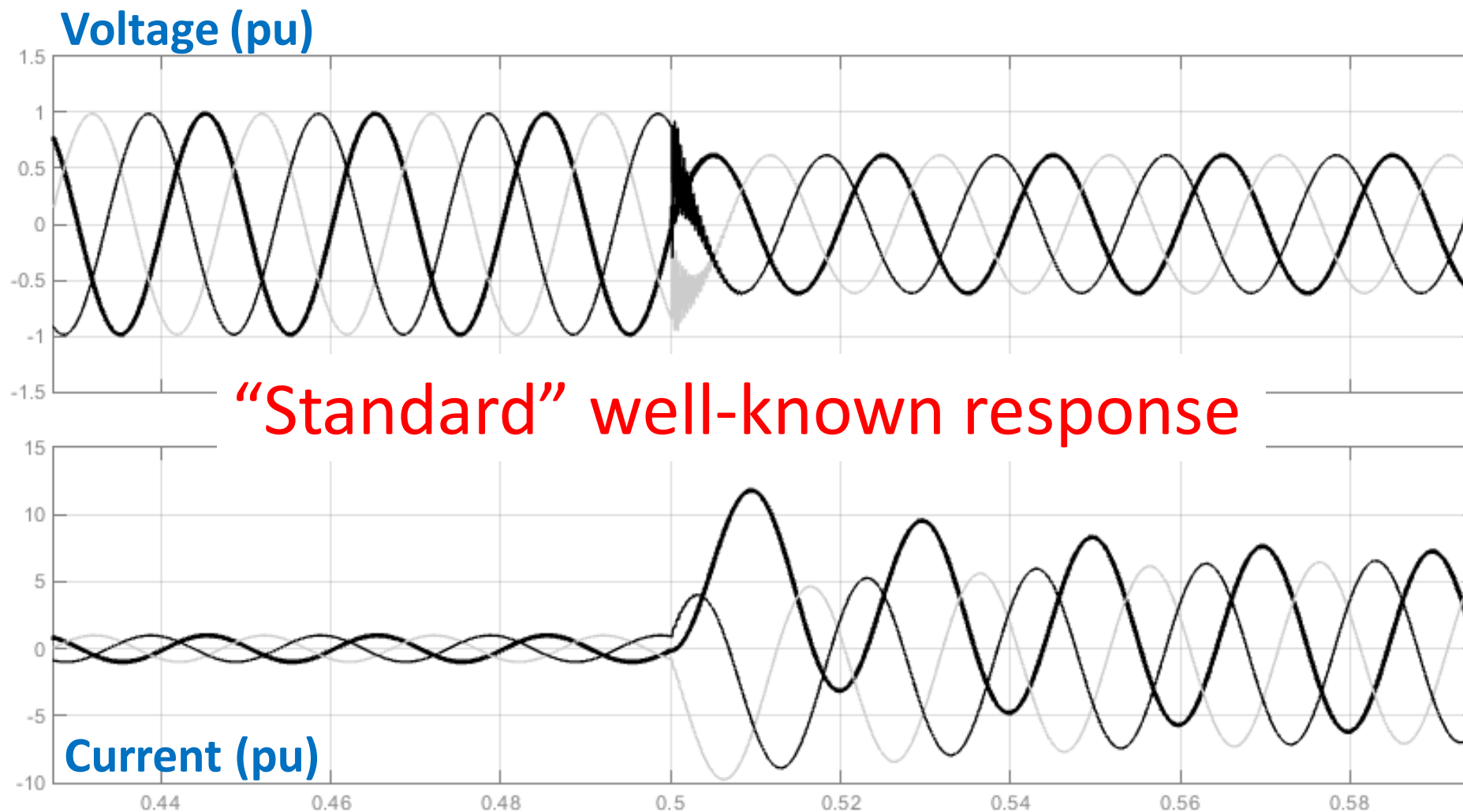
Impact of reduced inertia on frequency control – loss of 1.32 GW generation in Great Britain grid





Protection of converter-dominated systems

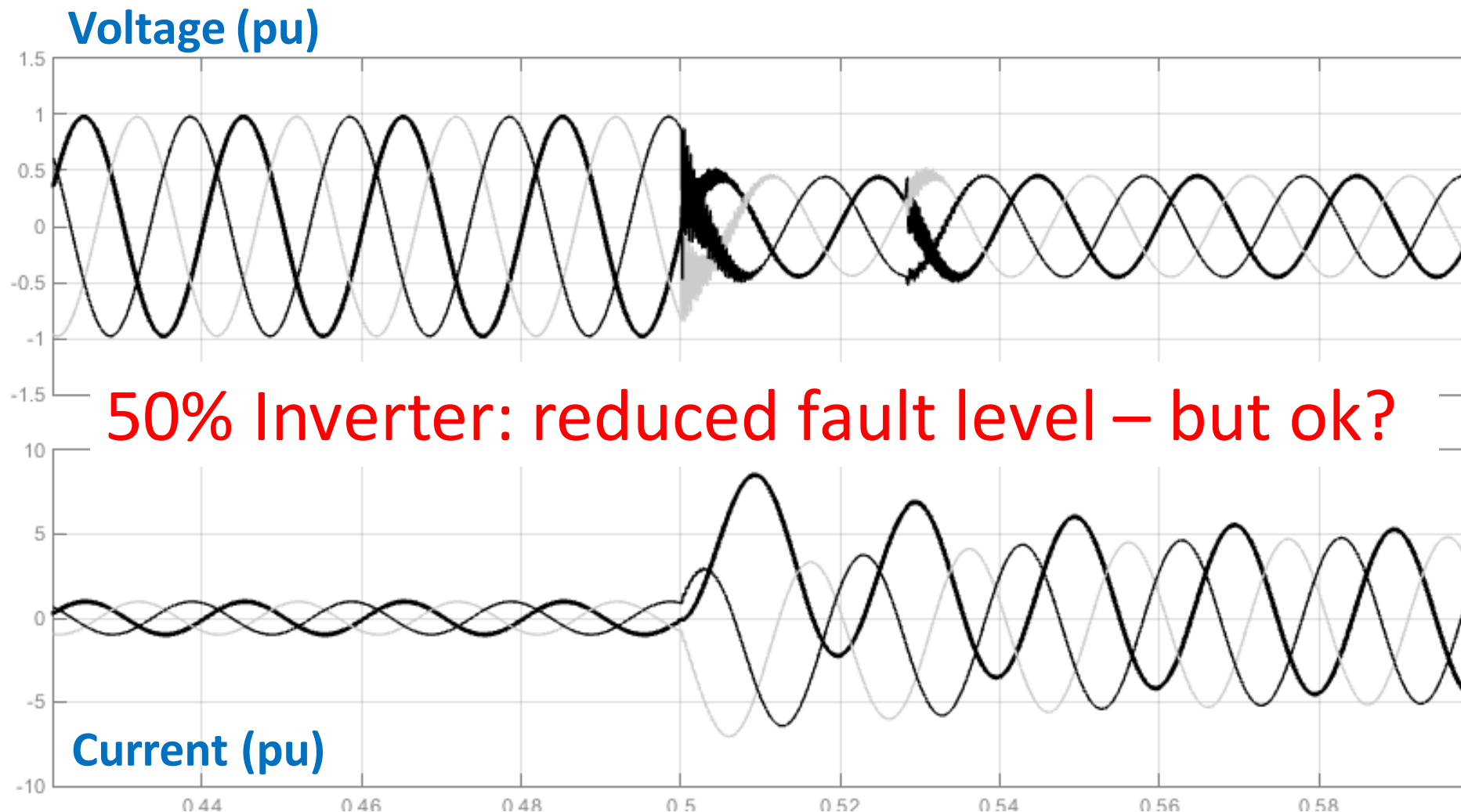
Three-phase fault: **0% converter penetration level**





Protection of converter-dominated systems

Three-phase fault: **50% converter penetration level**

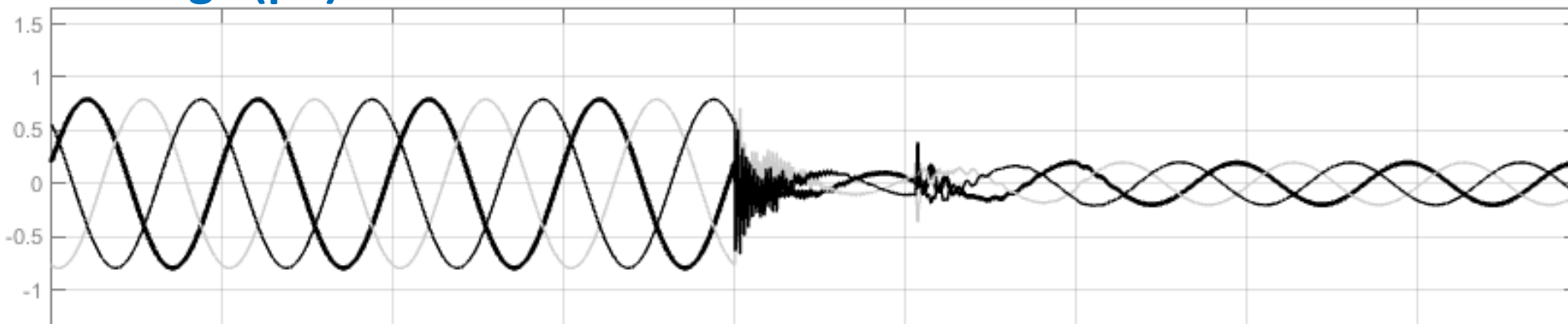




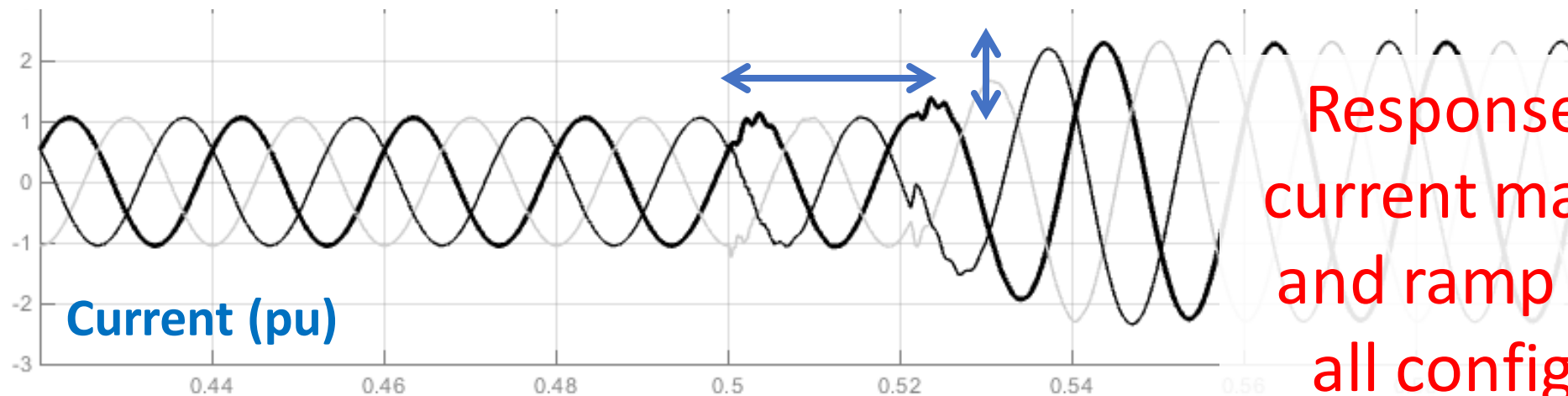
Protection of converter-dominated systems

Three-phase fault: **100% converter penetration level**

Voltage (pu)



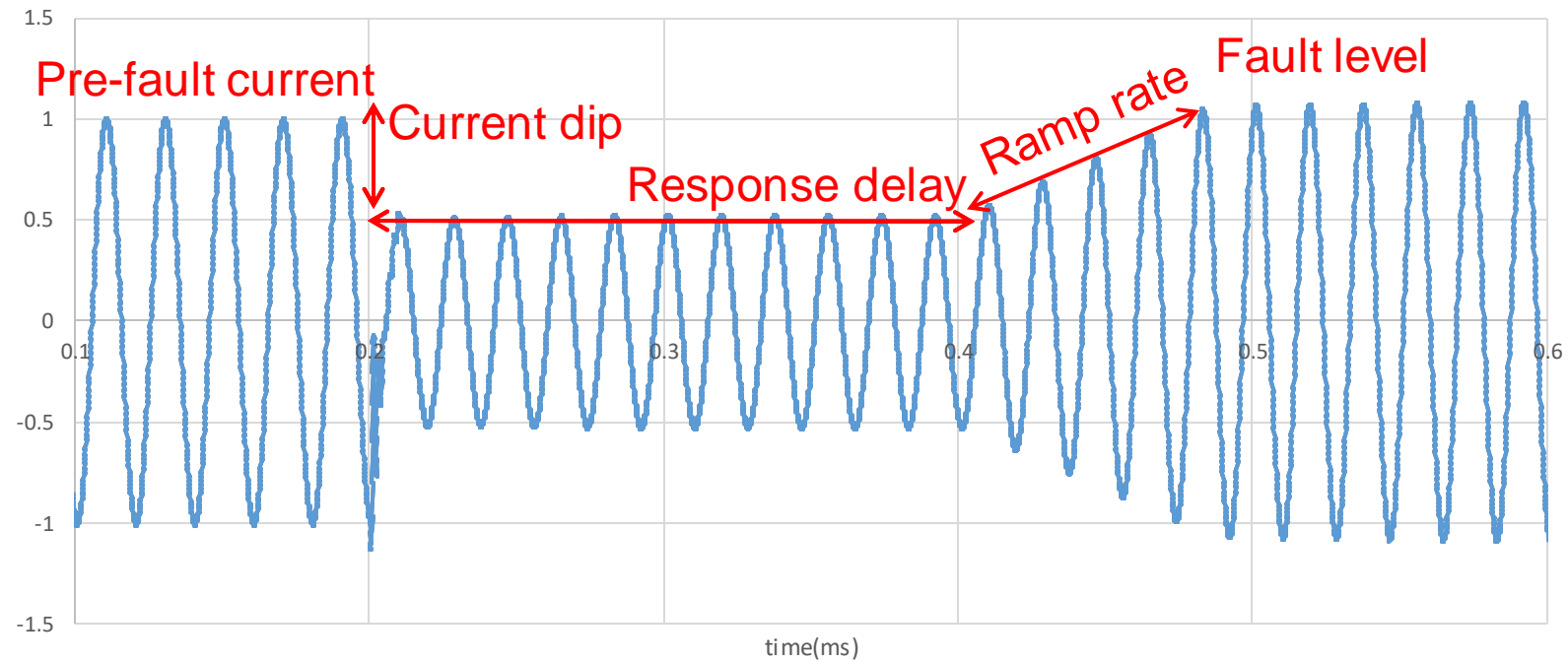
100%: OK? Delay in response, waveform distortion...?



Response delay,
current magnitude
and ramp rate are
all configurable

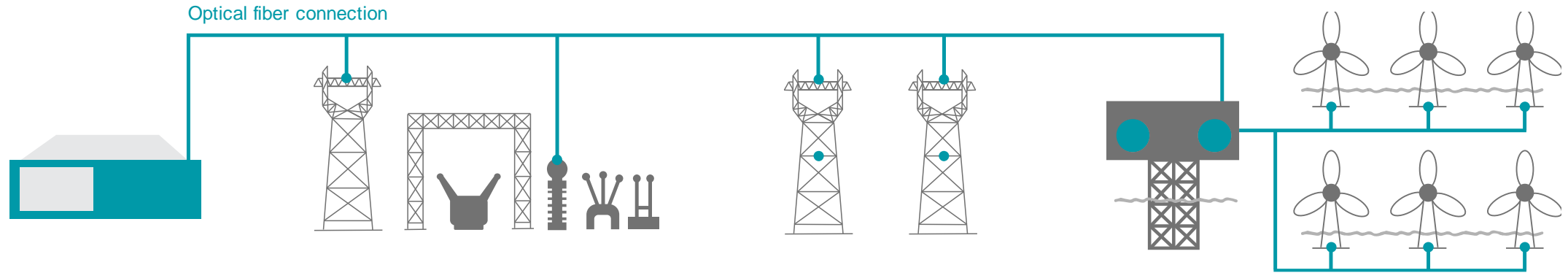


“Designer” fault currents





CPOW sensing scheme overview



- One powered Interrogator
- Arrays of passive sensors measure **voltage, current, strain, vibration, temperature**
- Integrated into existing standard telecoms fiber network
- 5P / 0.2M class electrical measurements
- Microsecond time accuracy on all measurements
- Delivers CPOW data from every sensor



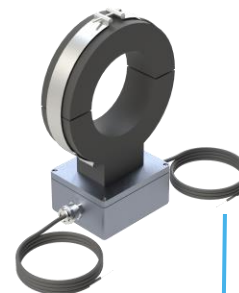
Sensor integration

- Current and voltage sensors are integrated with **standard CTs and VTs**, connected in series through single-mode fiber
- Primary or secondary connected
- No data, power, comms infrastructure or clocks outside substation

Interrogator



CT

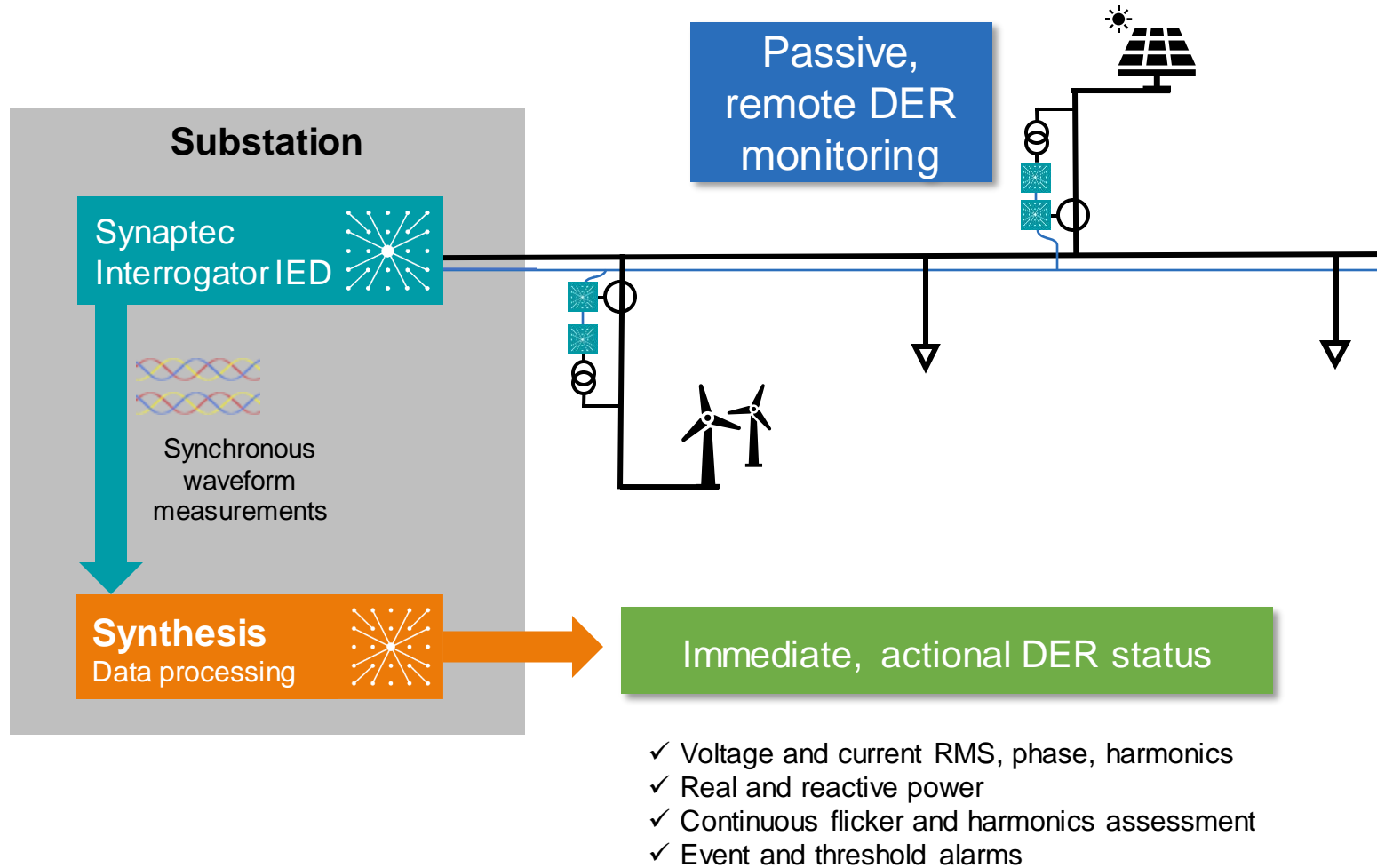


CVT





Remote DER monitoring

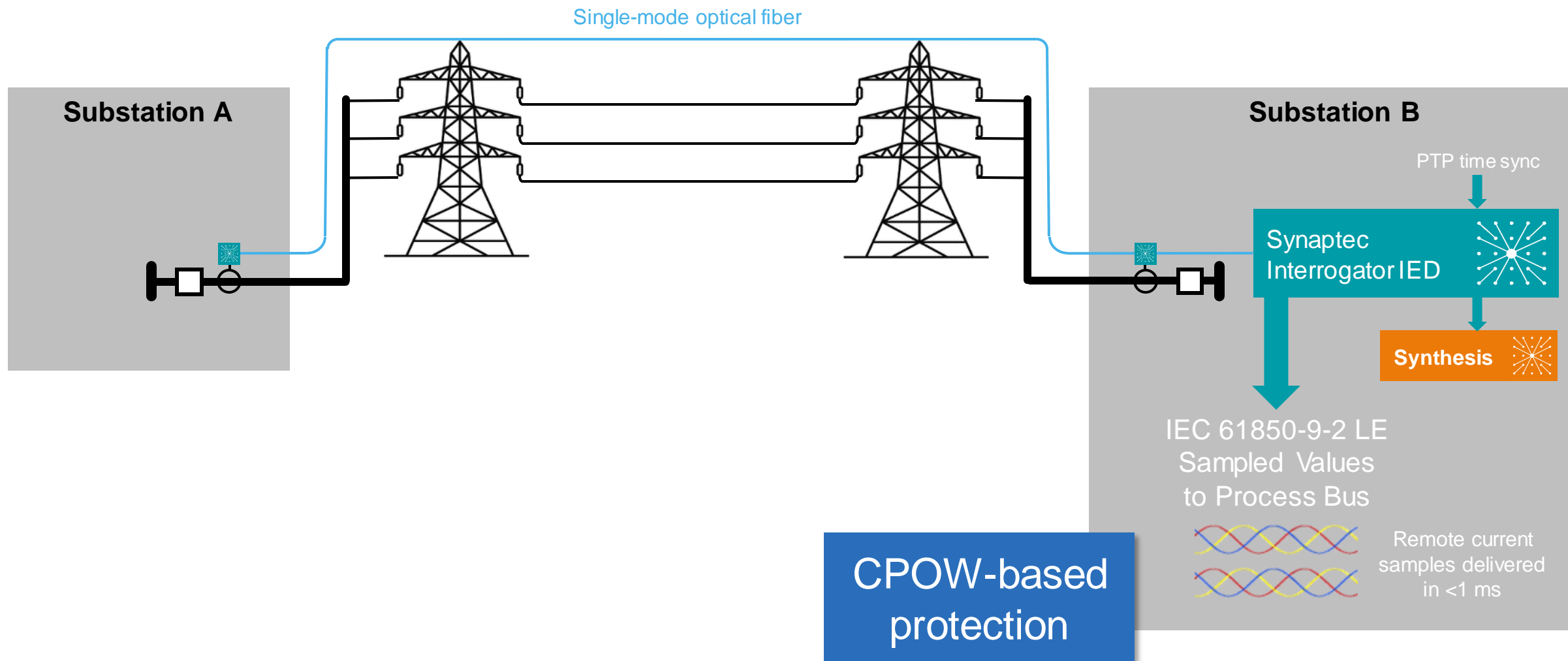


Summary of value:

- Visibility of remote DER assets
- Immediate warnings of network PQ violations
- Reduced outages due to PQ-related side-effects of converter control
- Enables more DER connections due to better understanding of constraints



Wide-area line protection

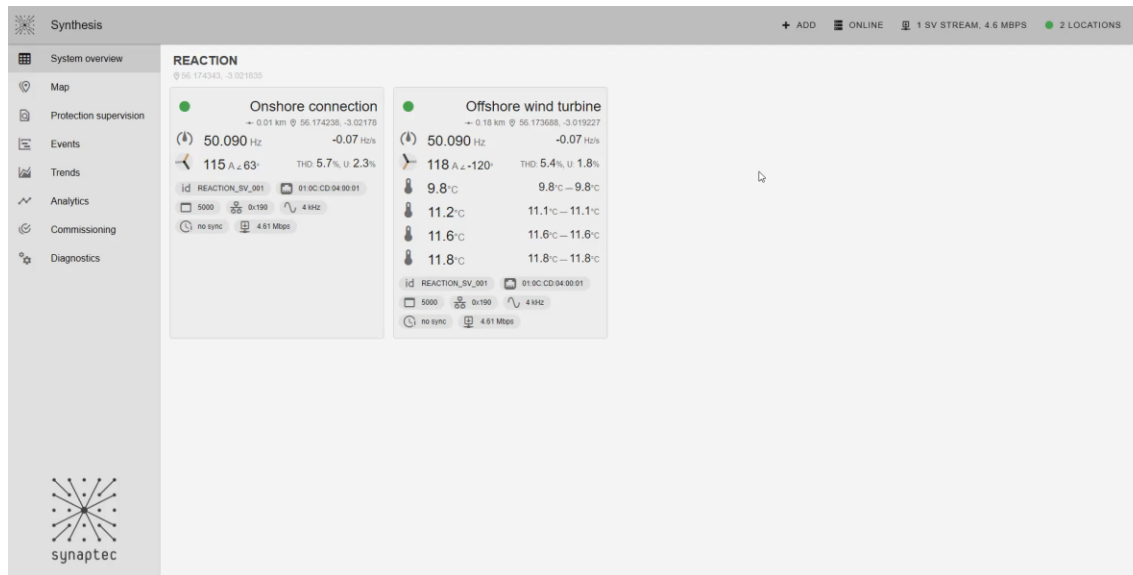
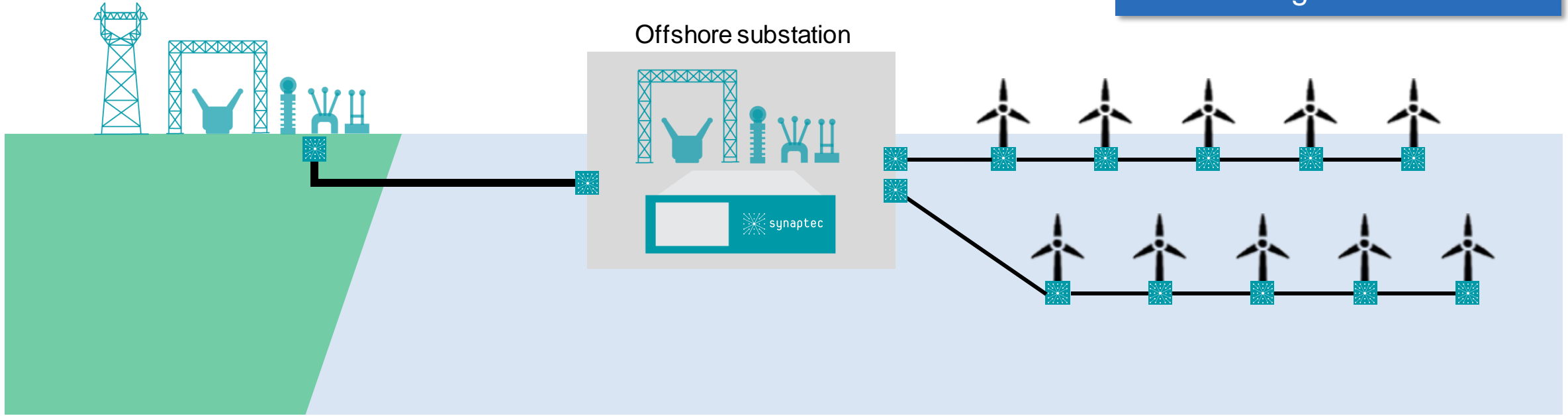




Wind farm monitoring

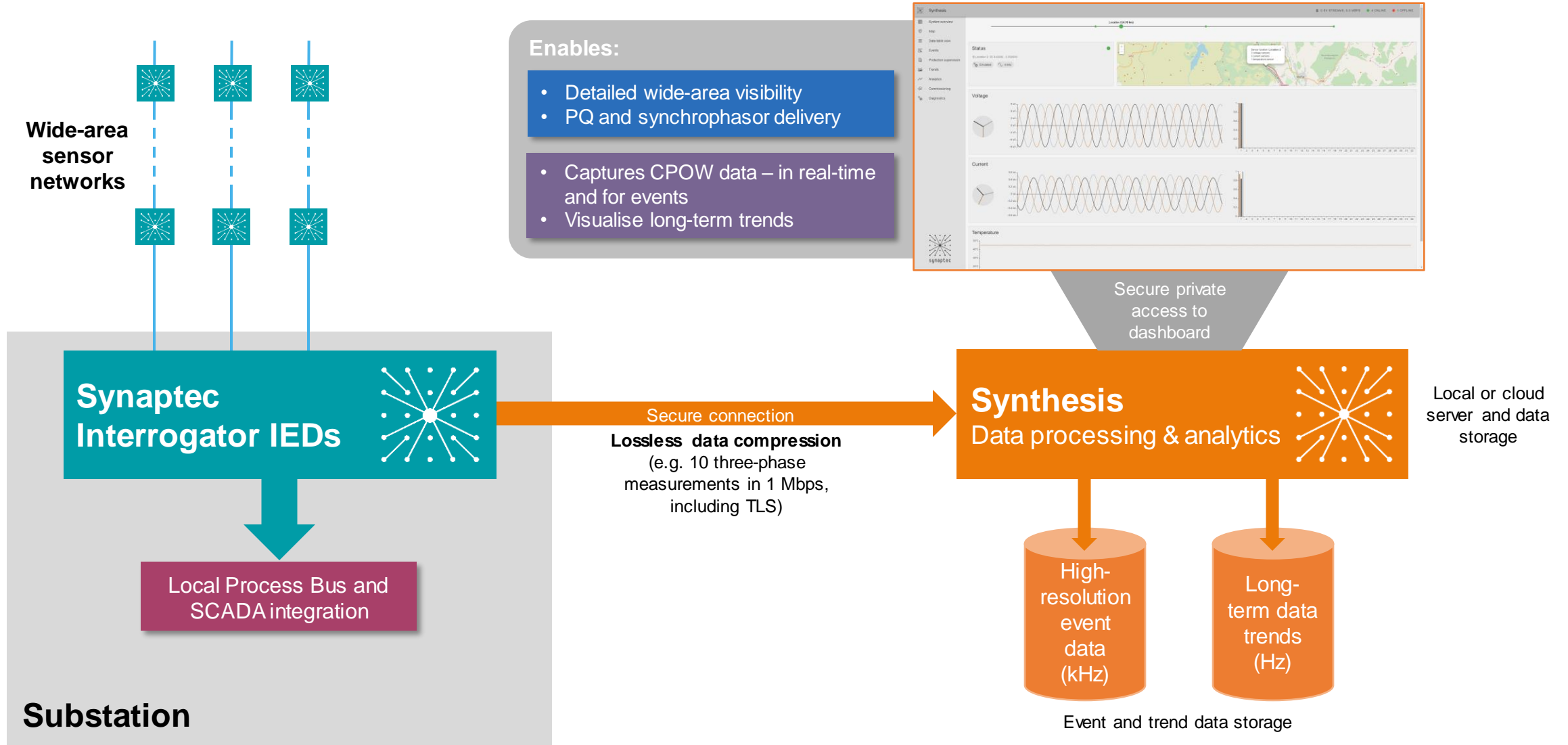
Synchronous, permanent PQ monitoring at all locations

Offshore substation





Synthesis – waveform data analysis

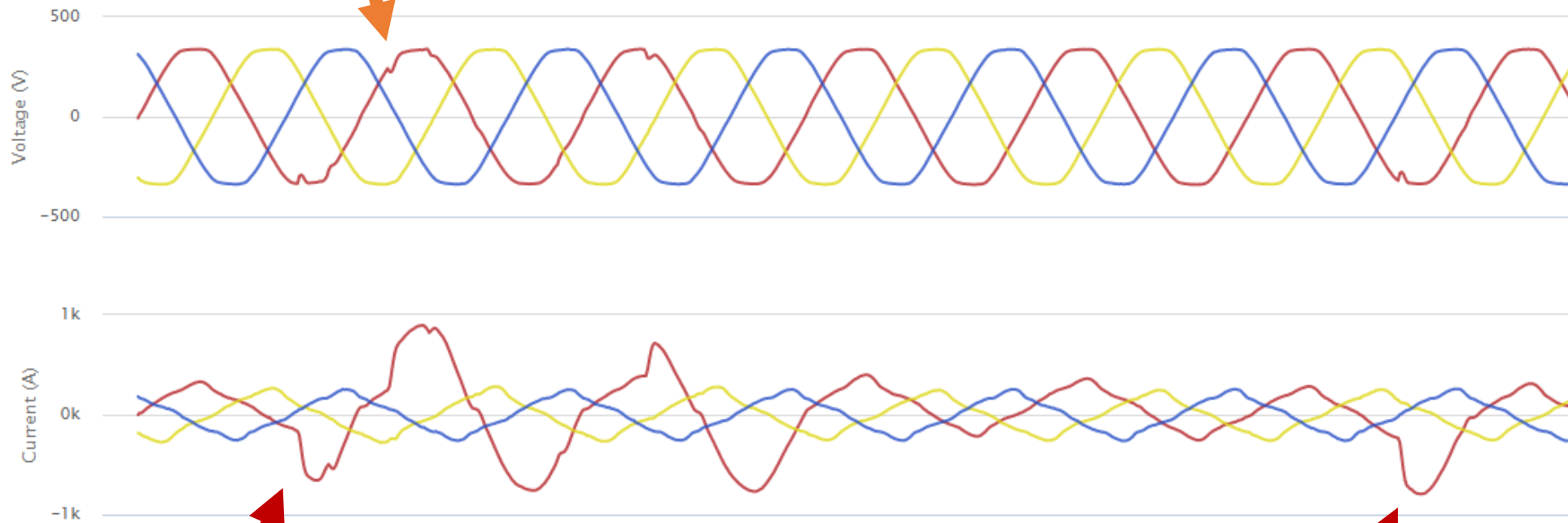




Synchronised transient detection and archiving

Synchronous measurements: see
time-aligned voltage notching

All data available here:
<http://c2c.eee.strath.ac.uk>



Arcing fault

Re-ignition

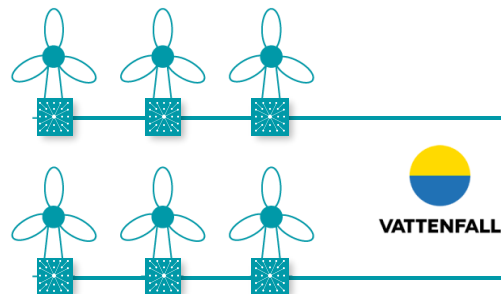


Zero-power sensor arrays and unique analytics



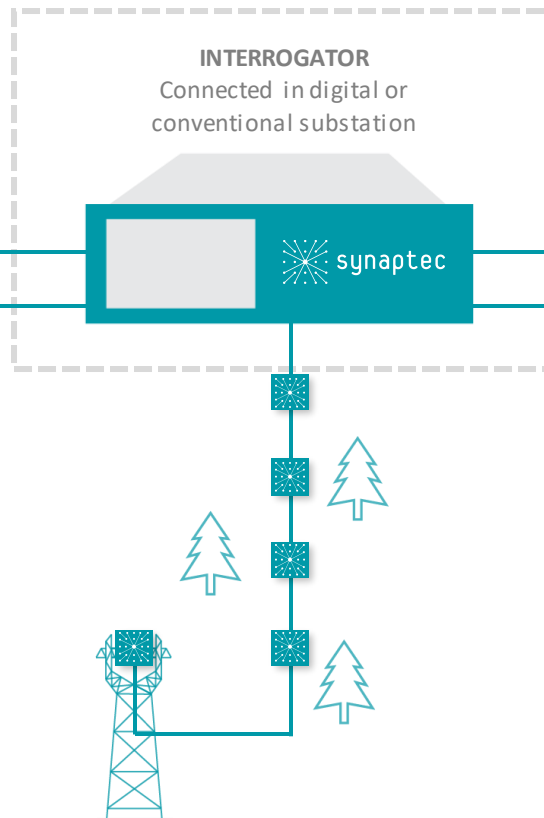
DIGITAL SUBSTATIONS

- Multipoint synchronous protection and asset monitoring
- Centralised busbar protection
- Less copper wiring and active devices in yard



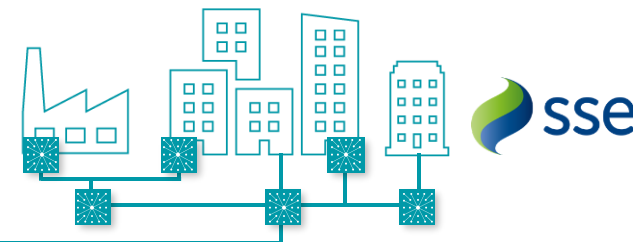
RENEWABLE GENERATION

- Termination temperature monitoring
- Real Time Thermal Rating
- Permanent Power Quality from every generator
- Auto-reclose for every cable
- Simplified substation and grid connection instrumentation



WIDE AREA MONITORING

- Upgrade from PMU to streaming multipoint CPOW data
- Synchrophasors without networks or latency
- Better state estimates and frequency control
- OHL monitoring
- Real Time Thermal Rating
- Sag and vibration monitoring



COMPLEX CIRCUITS

- Wide area protection
- Multi-zone faulted section identification
- Multi-ended circuits and meshed cable systems
- Underground monitoring



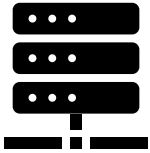
CABLE FAULT DETECTION

- Enables auto-reclose on OHL, blocks command for cable sections
- No power or comms required in remote locations
- Multiple cable sections
- Additional temperature monitoring

Summary



Secure



Maintenance-free



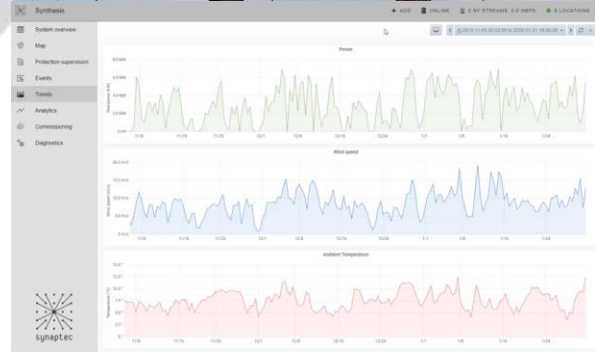
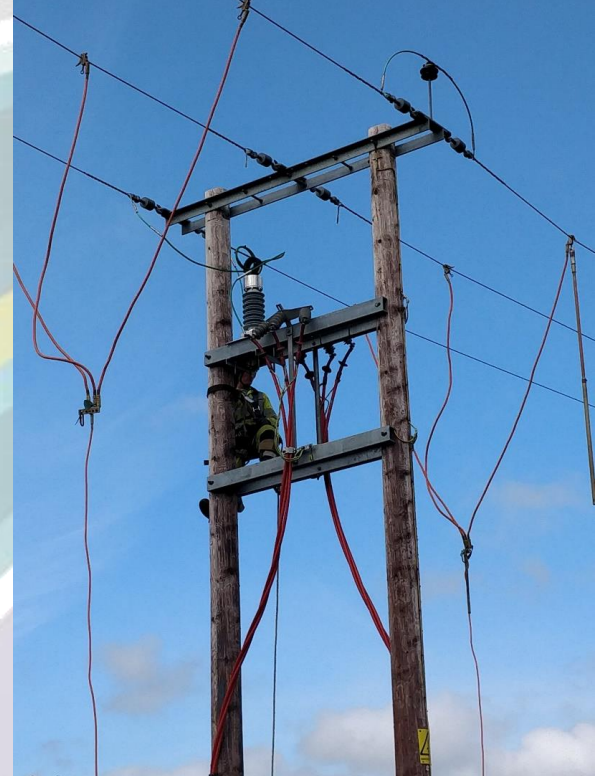
Live, real-time data



New, integrated data sources



Supports new CPOW applications





Contact

Dr Steven Blair

Head of Power Systems Technologies

steven.blair@synapt.ec

Synaptec Ltd

204 George Street
Glasgow G1 1XW, UK

t: +44 141 488 3664

w: synapt.ec