

Performance Monitoring and Model Validation of Power Plants

NASPI

Sacramento, CA

June 03-04, 2009

Steve Yang

Dmitry Kosterev



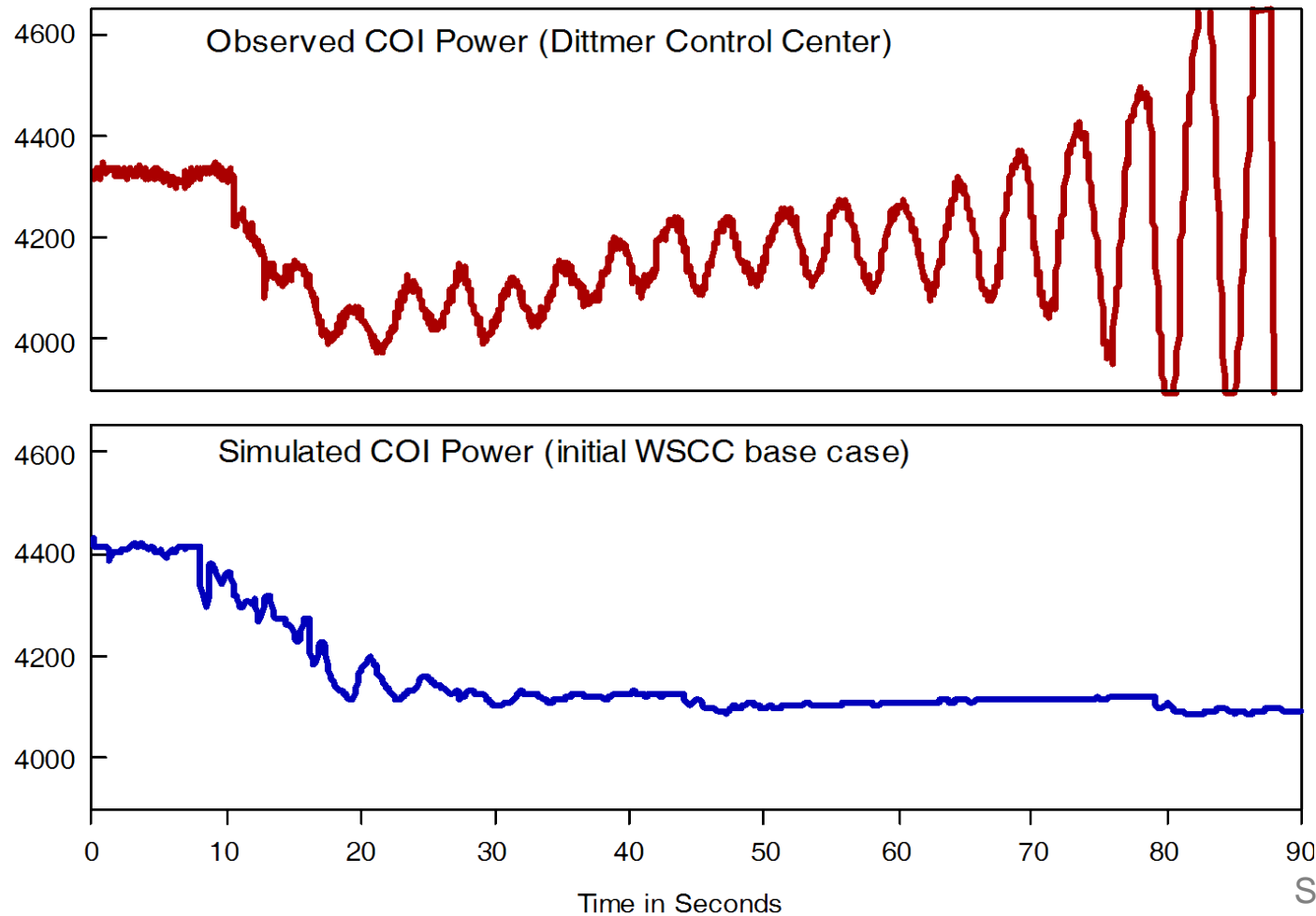
Outline

- Motivation
- Model validation technique
- Results
- Findings
- BPA's vision
- Question



Motivation

August 10, 1996



Motivation (continued)

- Planning and operational decisions are made based on system studies using models, without the accurate models, these study results give false outcome
- Accurate and realistic assessments dynamic response capability of all plants are essential for system stability especially with high capacity wind integration
- WECC generator testing program has improved generator models but we believe there are still lot of room to improve
- No certification program on generator test performers



BPA Generator Monitor Locations

PMU

- | | |
|--------------------------------|----------------------|
| ▪ The Dalles 230 | - 1,776 MW |
| ▪ John Day | - 2,576 MW |
| ▪ John Day 230 (wind) | - 800 MW and growing |
| ▪ Chief Joseph | - 2,670 MW |
| ▪ McNary | - 840 MW |
| ▪ Grand Coulee 3rd | - 4,600 MW |
| ▪ Colstrip 3&4 | - 1,526 MW |
| ▪ Columbia Generating Station | - 1,100 MW |
| ▪ Boardman (at Slatt) | - 620 MW |
| ▪ Hermiston Power Partners | - 580 MW |
| ▪ Hermiston Generating Project | - 480 MW |



Portable Power System Monitor (PPSM)

- | | |
|-------------------------------|-----------------------|
| ▪ Bonneville PH#2 | - 576 MW |
| ▪ Centralia | - 1,530 MW |
| ▪ Boundary | - 1,050 MW |
| ▪ Chehalis Generating Project | - 600 MW |
| ▪ Kemano (Canada) | - 920 MW |
| ▪ Tucannon River (wind) | - 150 MW |
| ▪ Spring Creek (wind) | - 200 MW |
| ▪ Total: (18 projects) | > 22,000 MW |



Spring Creek
PPSM

Future Locations: Lower Monumental, Lower Granite, Little Goose, Libby, Grand Coulee 230, Grays Harbo (Combine cycle), Slatt 230 (wind), Rock Creek (wind), Jones Canyon (wind), Condon (wind)

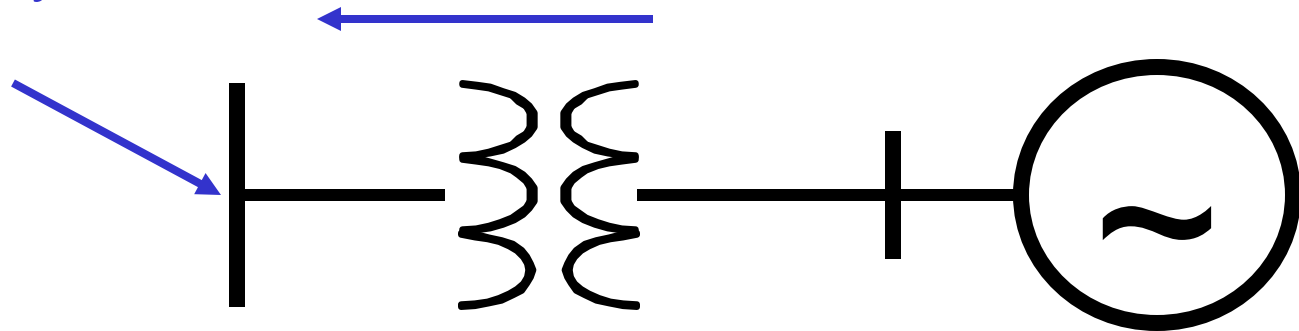


Validation Overview

GE PSLF Simulations

Inject Recorded
Voltage and
Frequency

Compare Recorded
and Simulated Power:
MW and MVAR



Disturbance “playback” is a standard feature in PSLF

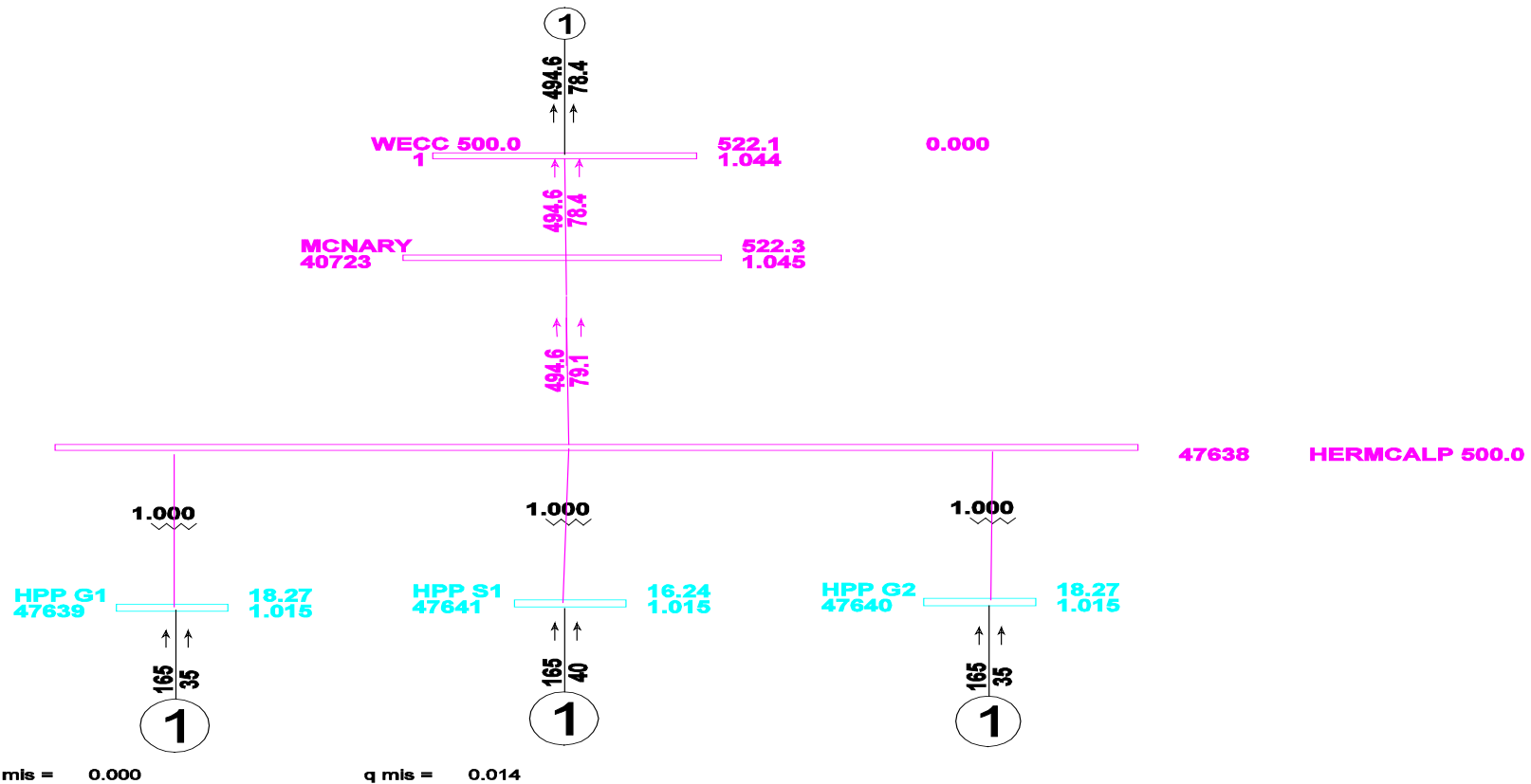


Validation Set-Up

- Build a sub system by extracting data from the latest base case
- Create a dyd file by extracting data from the latest dynamic file
- Solve load flow and confirm



Example of a sub-system



General Electric International, Inc. PSLF Program Thu Aug 02 00:54:47 2007 hpp.sav



MW/MVAR
hpp.drw
Rating = 1



Validation Procedure

1. Archive disturbance data from PMU(.dst)/PPSM(.mat) from the point of interconnection
2. Using ExportDST/Matlab, convert the .dst/.mat files to .csv to create event files
3. Create Generator.ini file with .con file if two or more units are combined (SCADA data)
4. Run EPCL "GENS_set_base_cases.p" and "GENS_Simulate.p"
5. Plot the results



Results

- Blue trace is recorded data
- Red trace is simulated data



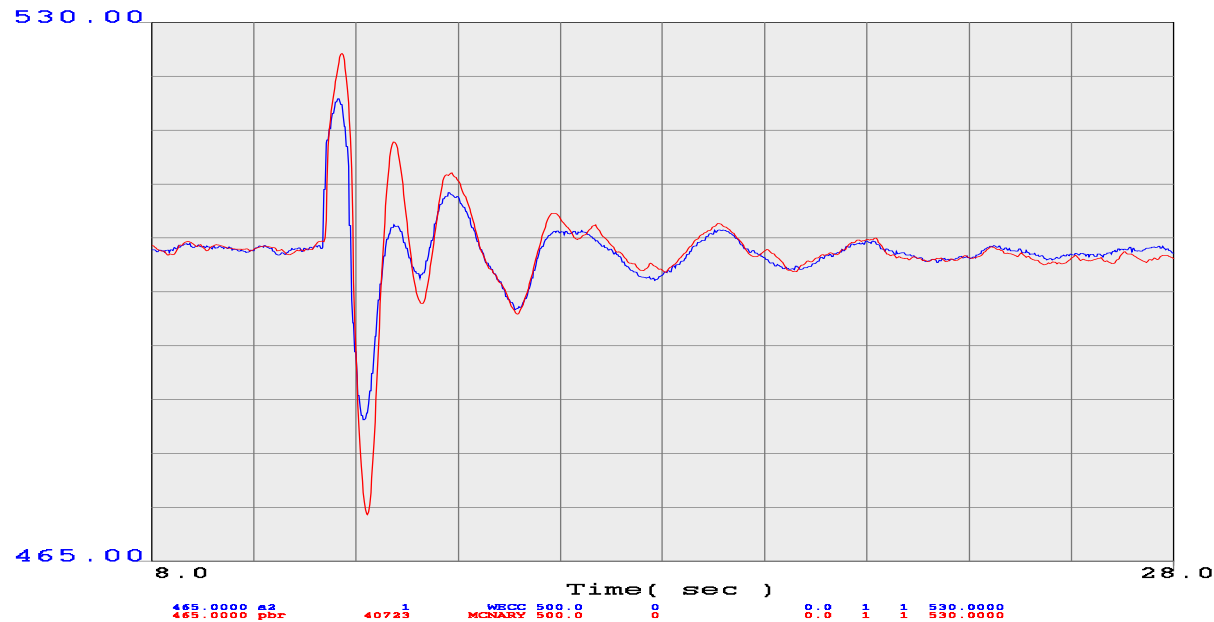
Chief Joseph Braking Resister (1400 MW)



A device used to help maintain stability in a power system by absorbing electrical energy for a brief period following a system disturbance. The BPA resistance brake, installed at Chief Joseph Substation and switched on for about one-half second when certain abnormal system conditions are detected, consists of five kilometers (three miles) of one-half inch stainless steel wire for each of the three phases of the power system, each wire strung in a vertical configuration on a modified transmission tower.

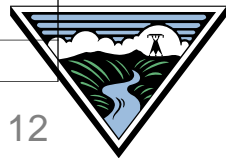


Calpine combine cycle plant – Chief Jo Brake event (August 2008) – Real Power

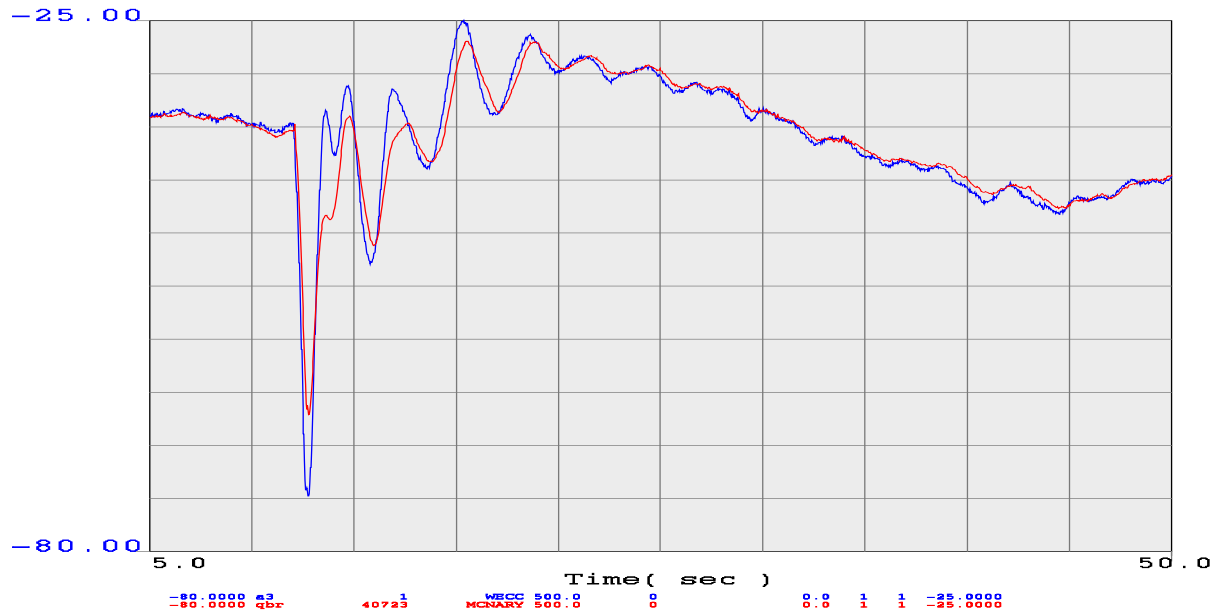


HPP-2008-08-19-1310.chf

Page 1
el validation\hpp example
Thu May 14 12:53:50 2009



Calpine combine cycle plant – Chief Jo Brake event (August 2008) – Reactive power

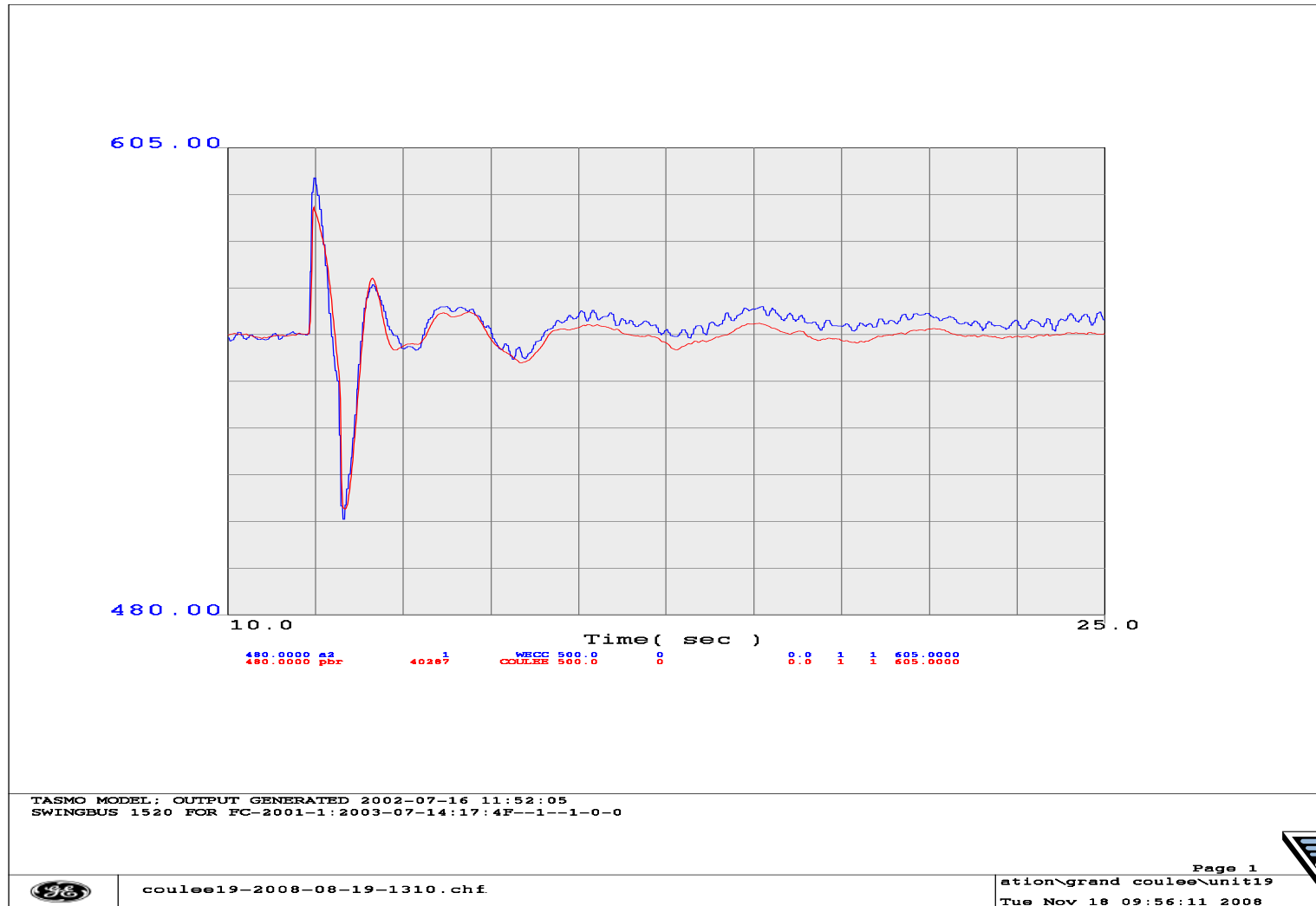


hnp-2008-08-19-1310.chf

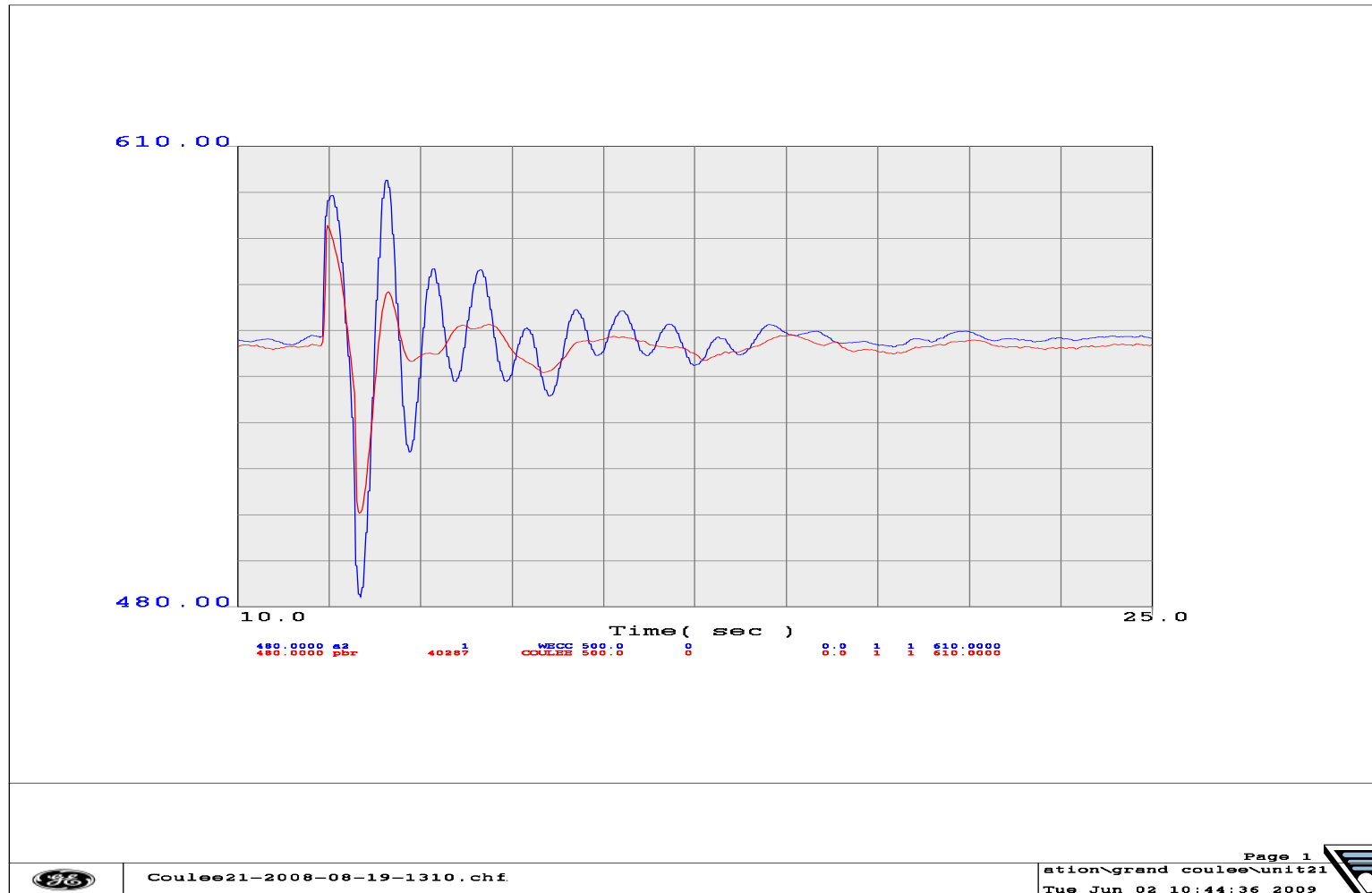
Page 2
el validation\hnp example
Tue Nov 18 10:12:51 2008



Grand Coulee Unit 19 – Chief Jo Brake event (August 2008) – Real Power



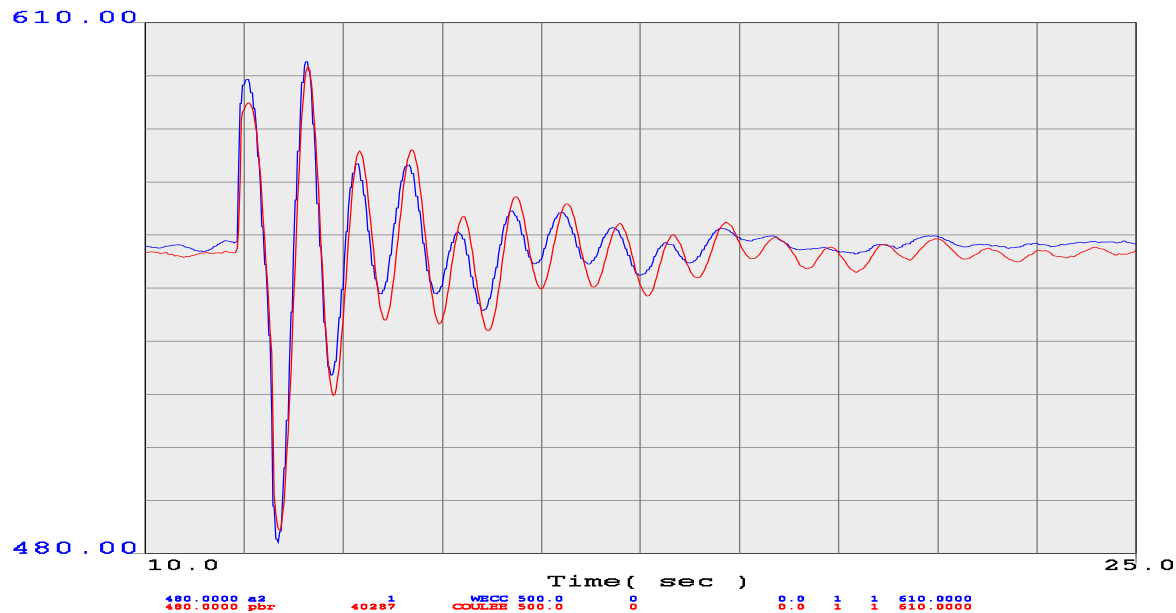
Grand Coulee Unit 21 – Chief Jo Brake event (August 2008) – Real Power



Coulee21-2008-08-19-1310.chf

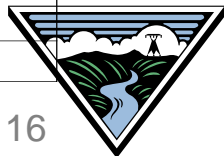


Grand Coulee Unit 21 – Chief Jo Brake event (August 2008) – Real Power-PSS-Off

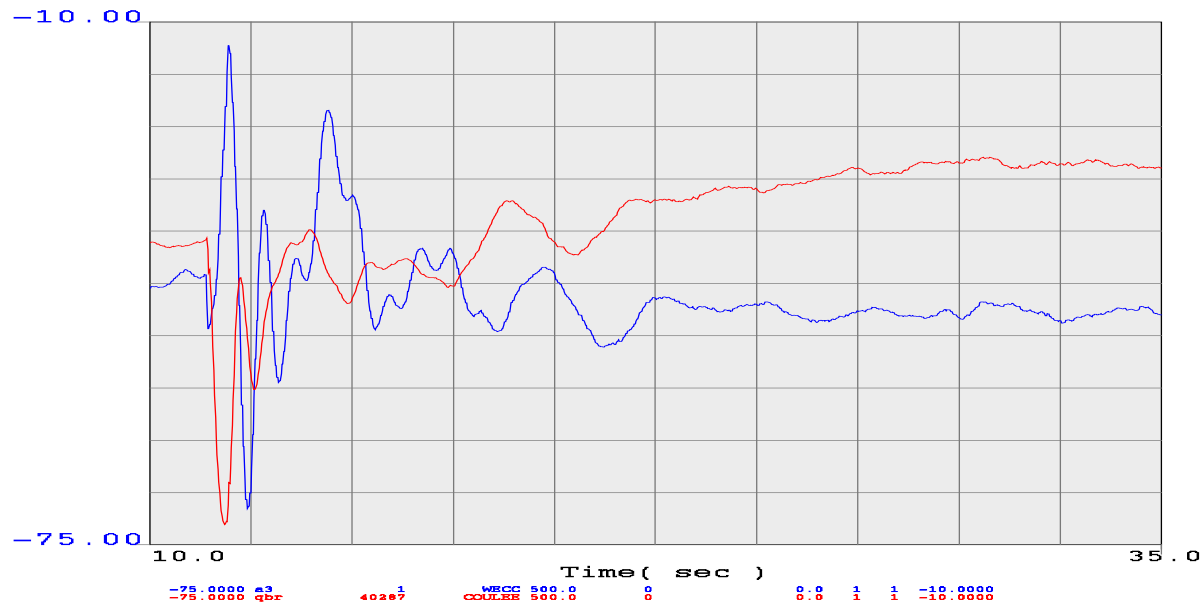


coulee21-2008-08-19-1310.chf

Page 1
ation\grand coulee\unit21
Tue Jun 02 11:02:30 2009



Grand Coulee Unit 21 – Chief Jo Brake event (August 2008) – Reactive Power

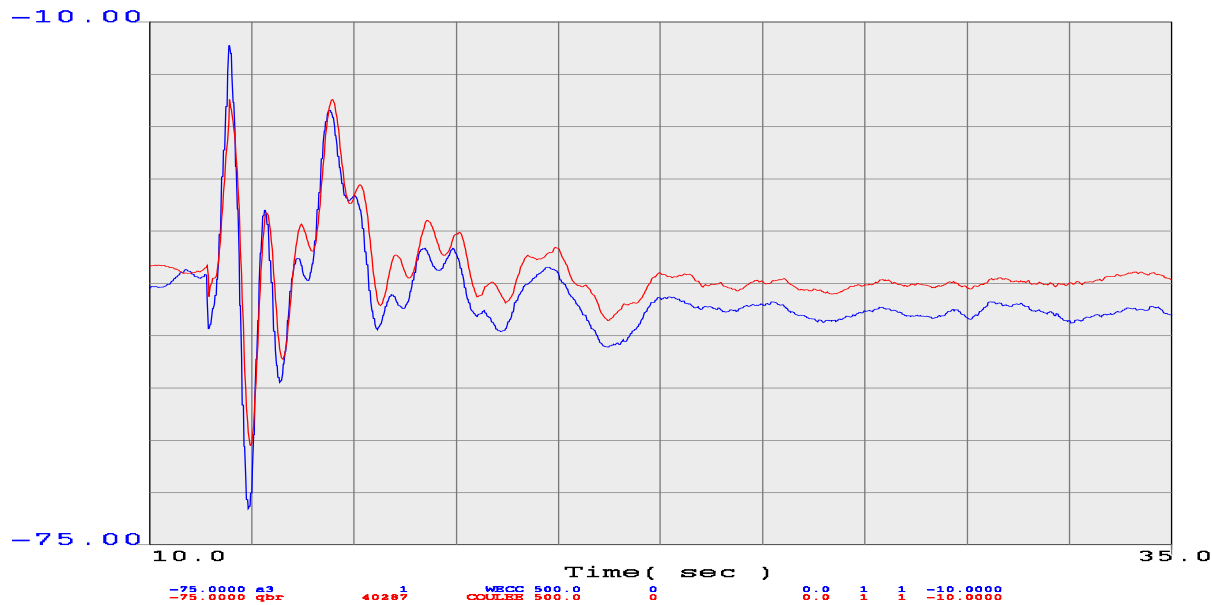


Coulee21-2008-08-19-1310.chf

Page 2
ation\grand coulee\unit21
Tue Jun 02 10:44:37 2009



Grand Coulee Unit 21 – Chief Jo Brake event (August 2008) – Reactive Power-PSS-Off

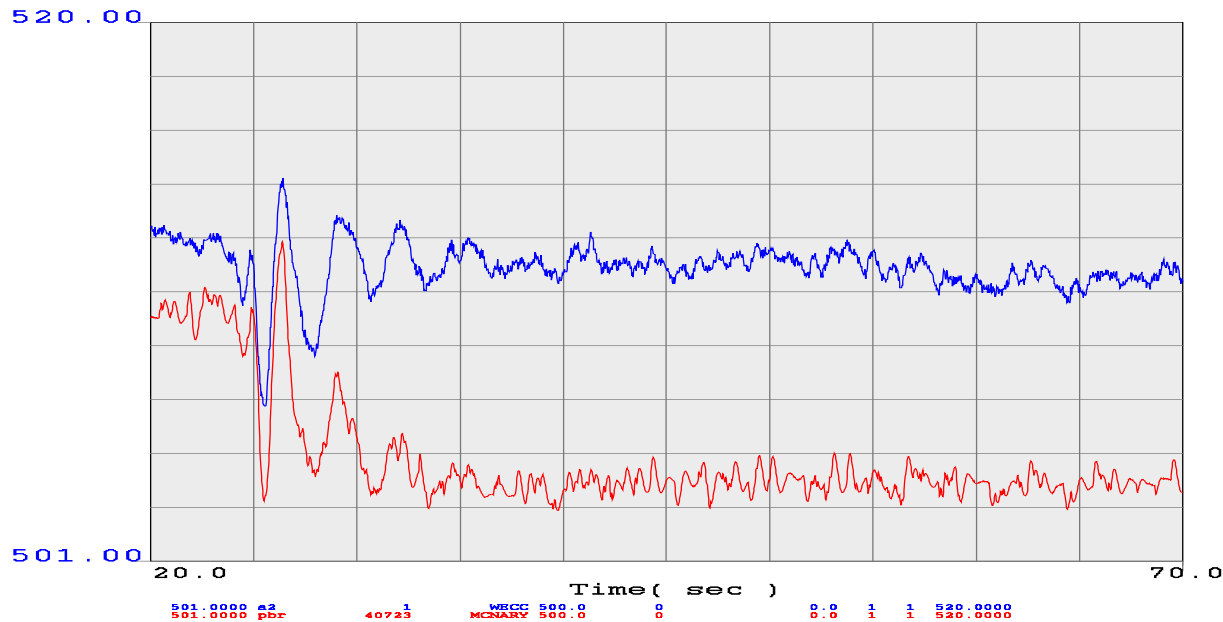


coulee21-2008-08-19-1310.chf

Page 2
ation\grand coulee\unit21
Tue Jun 02 11:02:30 2009



Calpine Combine Cycle plant – 3-24-2009 (Alberta Separation) – Real Power

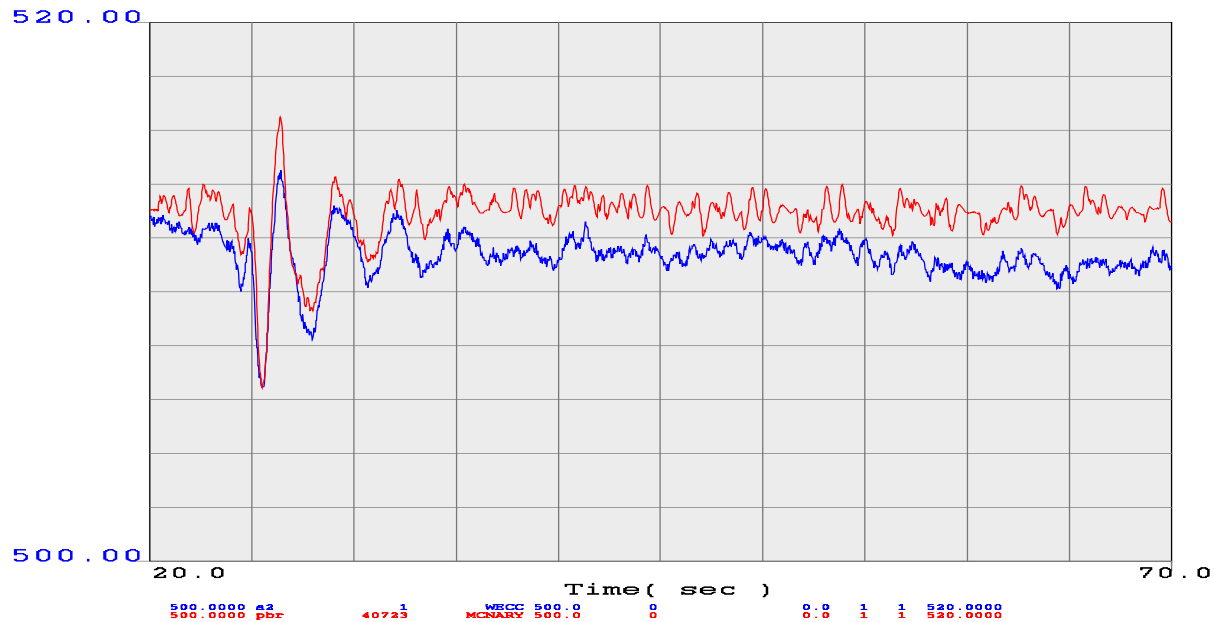


HPP-2009-03-24-1400.chf

Page 1
el validation\hpp example
Thu May 14 13:22:05 2009

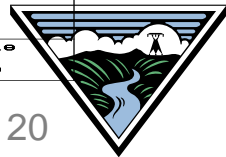


Calpine – 3-24-2009 (Alberta Separation) – Governor off - Real Power

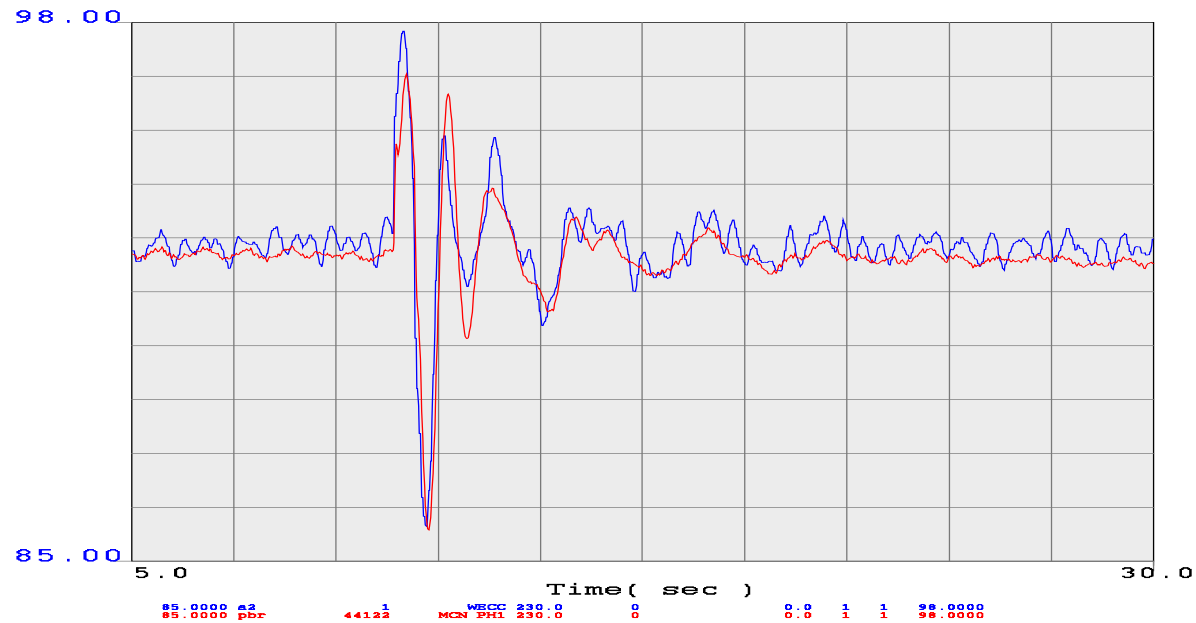


HPP-2009-03-24-1400.chf

Page 1
el validation\hpp example
Thu May 14 17:26:21 2009



McNary PH1 – Chief Jo Brake event (August 2008) – Real Power



mp1-2008-08-19-1310.chf

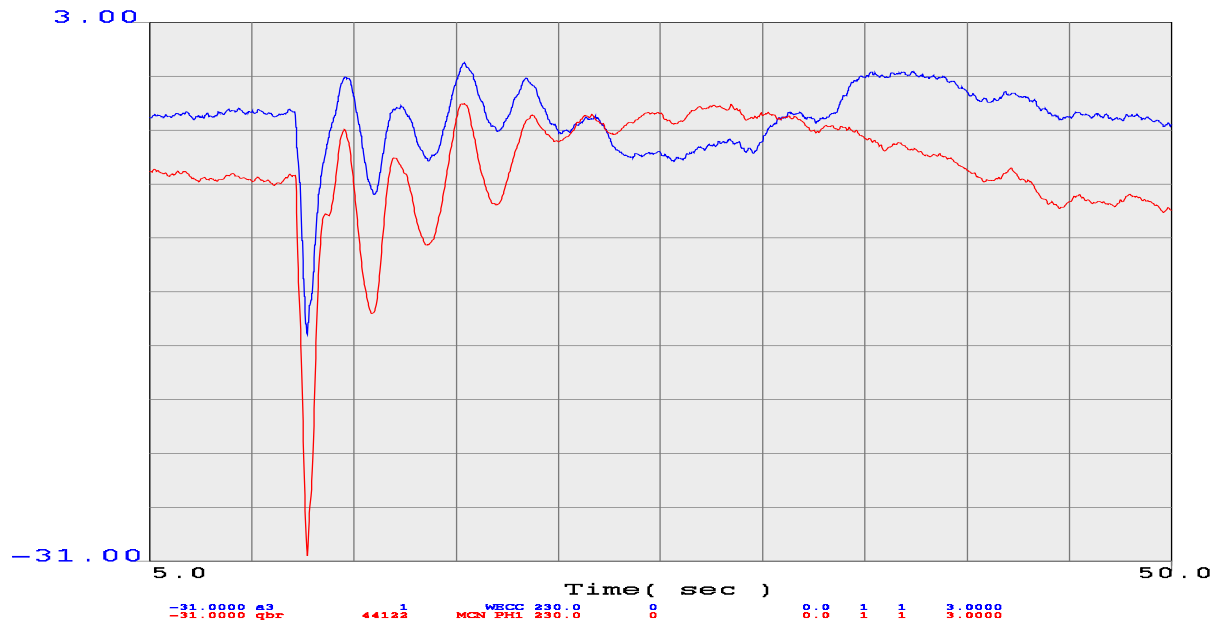
Page 1
del validation\mcnary\ph1
Mon May 18 15:29:25 2009



Gentpj test

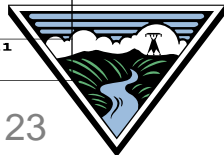


McNary PH1 – Chief Jo Brake event (August 2008) – Reactive Power

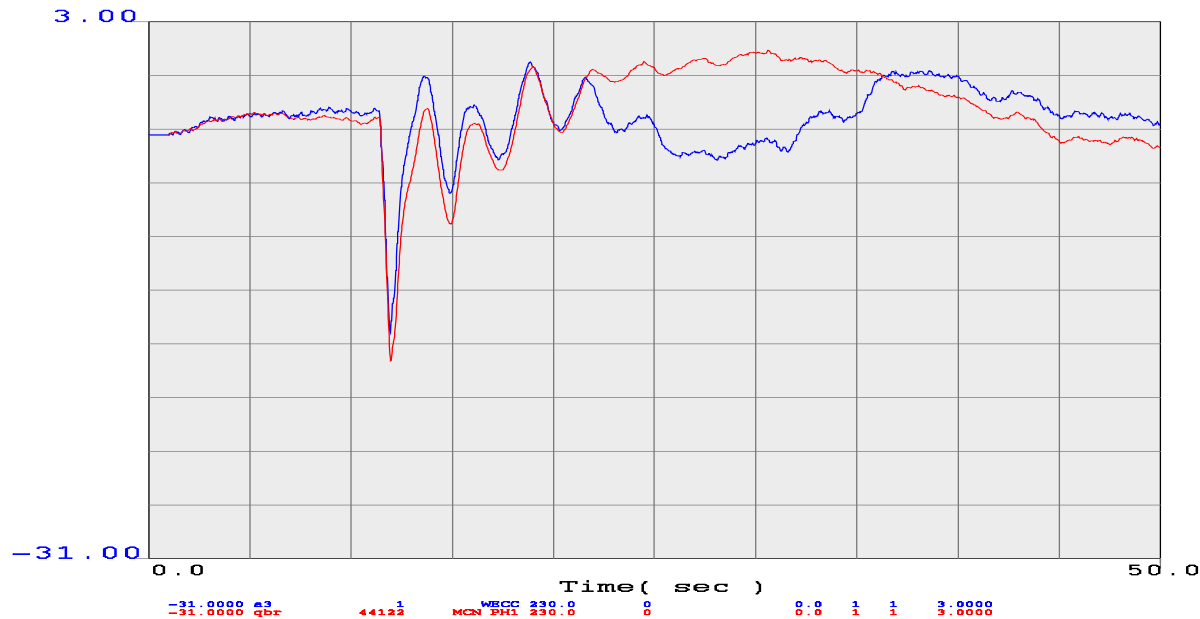


mp1-2008-08-19-1310.chf

Page 2
del validation\mcnary\ph1
Mon May 18 15:29:25 2009



McNary PH1 – Chief Jo Brake event (August 2008) – Reactive Power-gentpj



MP1-2008-08-19-1310.chf

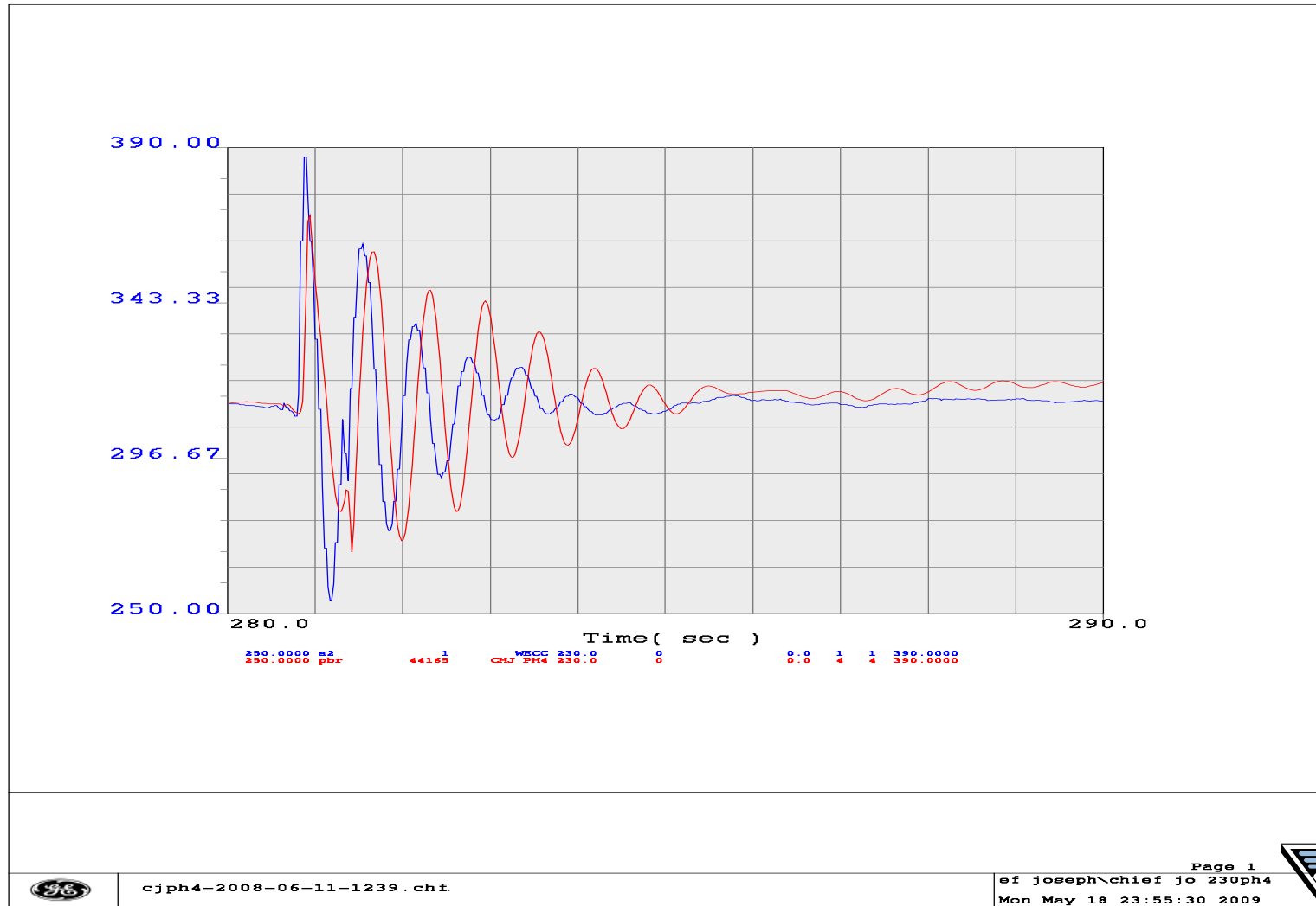
Page 2
del validation\mcnary\ph1
Thu May 28 15:15:16 2009



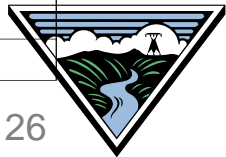
Chief Joseph Power Plant issue Inadequate baseline test



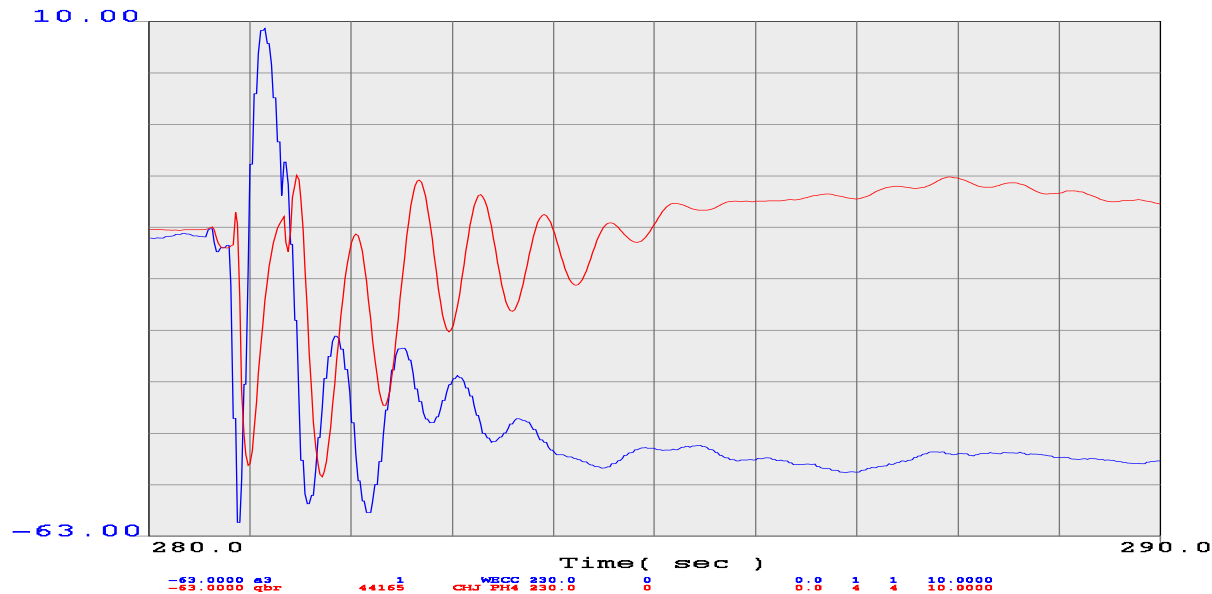
Chief Joseph PH4 Round Mountain RAS event 06-11-2008 – Real Power



cjph4-2008-06-11-1239.chf



Chief Joseph PH4 Round Mountain RAS event 06-11-2008 – Reactive Power



cjph4-2008-06-11-1239.chf

Page 2

ef joseph\chief jo 230ph4

Mon May 18 23:55:30 2009



Findings

- Model data errors, missing or misrepresentation of equipments
- Detection of the equipment problems (PSS off, off governor control)
- Good baseline test is required
- Sensitivity tests
- Data management and reporting
- There are limitations to the method (AGC, plant control)



BPA's Vision

- R&D project "Generator Facility Performance and Model Validation"
 - Build a tool so that after an event all the generator performance within BPA region can be verified within hours
- Deployment of Phasor Measurement Unit on POI for every major power plant, including wind generation
- Pilot project with US Army Corp of Engineer, relay PMU in the plant
- Load model validation
- Implement PMU dynamic response requirement
- Continually work with the generator owners within the BPA Control Area on resolving any modeling issues



Thank You
Questions?

