

A man in a light-colored suit jacket is standing and pointing towards a large wall display. The display shows a complex power system diagram with various colored lines (blue, green, red, yellow) representing different components and connections. The background is a control room with multiple computer monitors and a person sitting at a desk.

# SEL Update

## April 2026 NASPI FLASH Update

Jared Bestebreur, Senior R&D Manager, SEL  
April 14<sup>th</sup>, 2026





# Power system challenges that demand innovation

- Increasing grid complexity
- Growing integration of inverter-based resources
- Diverse energy demands
- Thousands of devices to manage
- Unprecedented data volumes



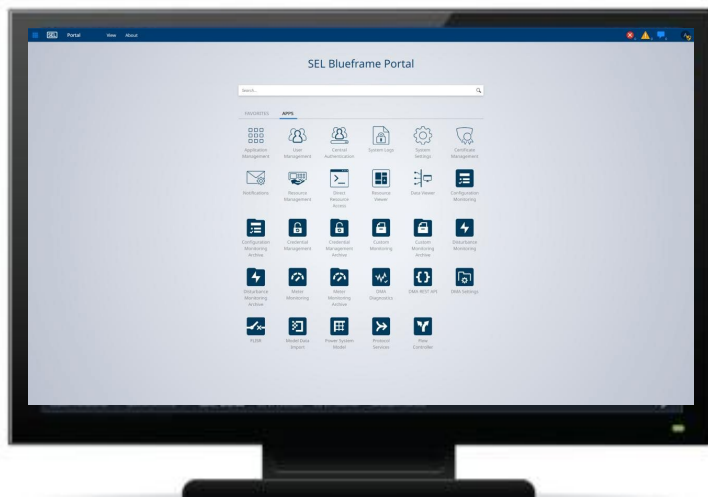
**“See beyond today and envision  
both the big picture and our future.”**

SEL Principals of Operation

# Introducing Blueframe 2.0



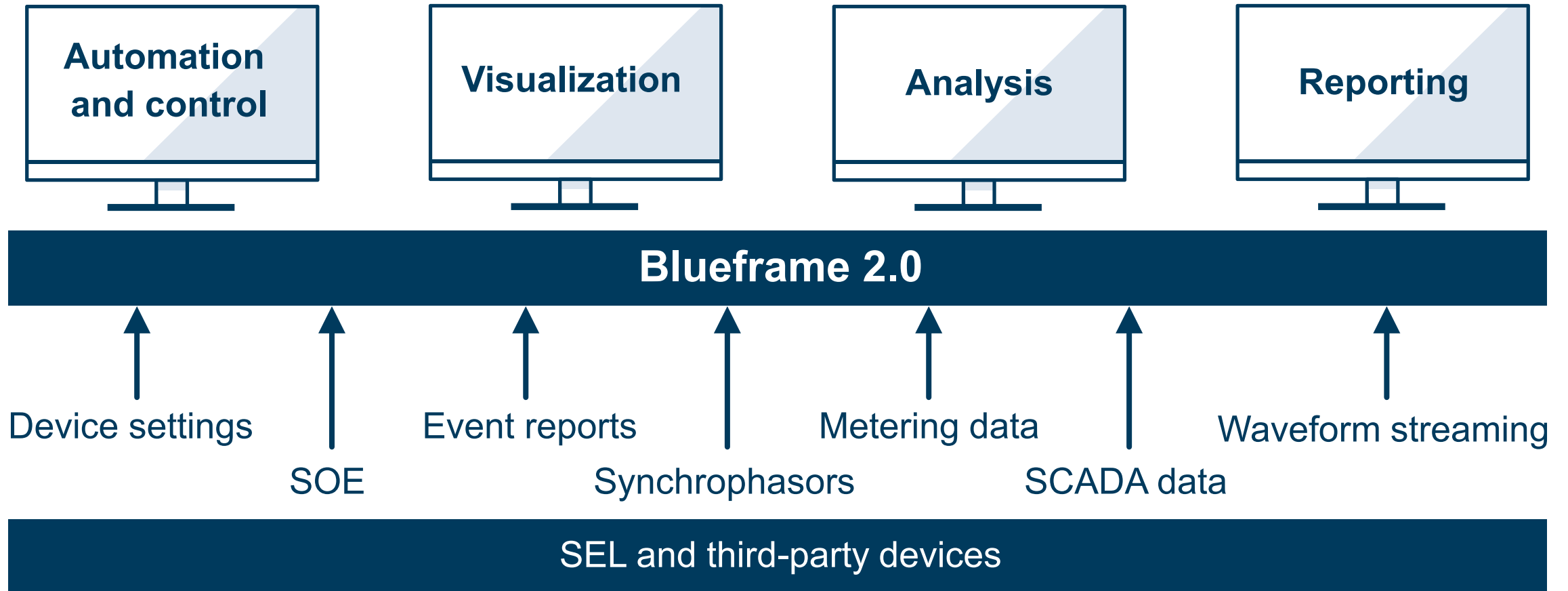
Secure platform for OT applications,  
including device management,  
data collection, and power  
system automation



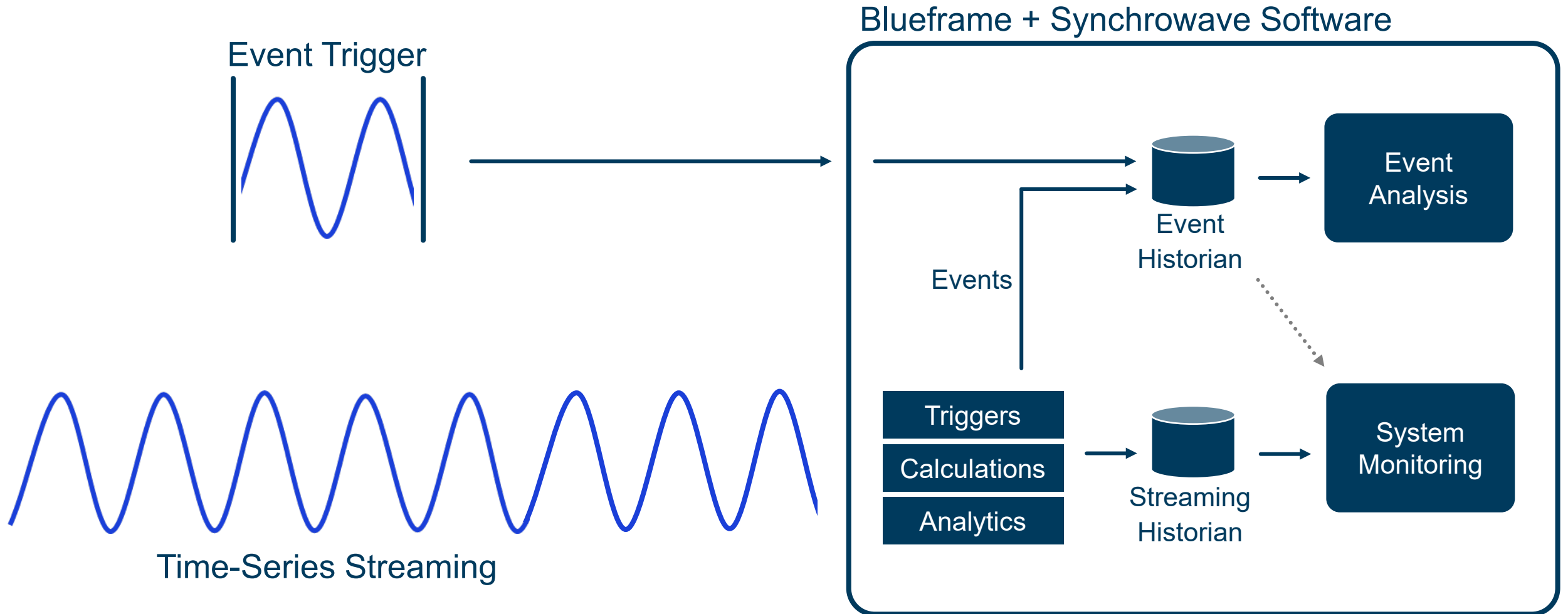
Technologies for power system  
visualization and high-resolution  
data archiving, analysis,  
and reporting

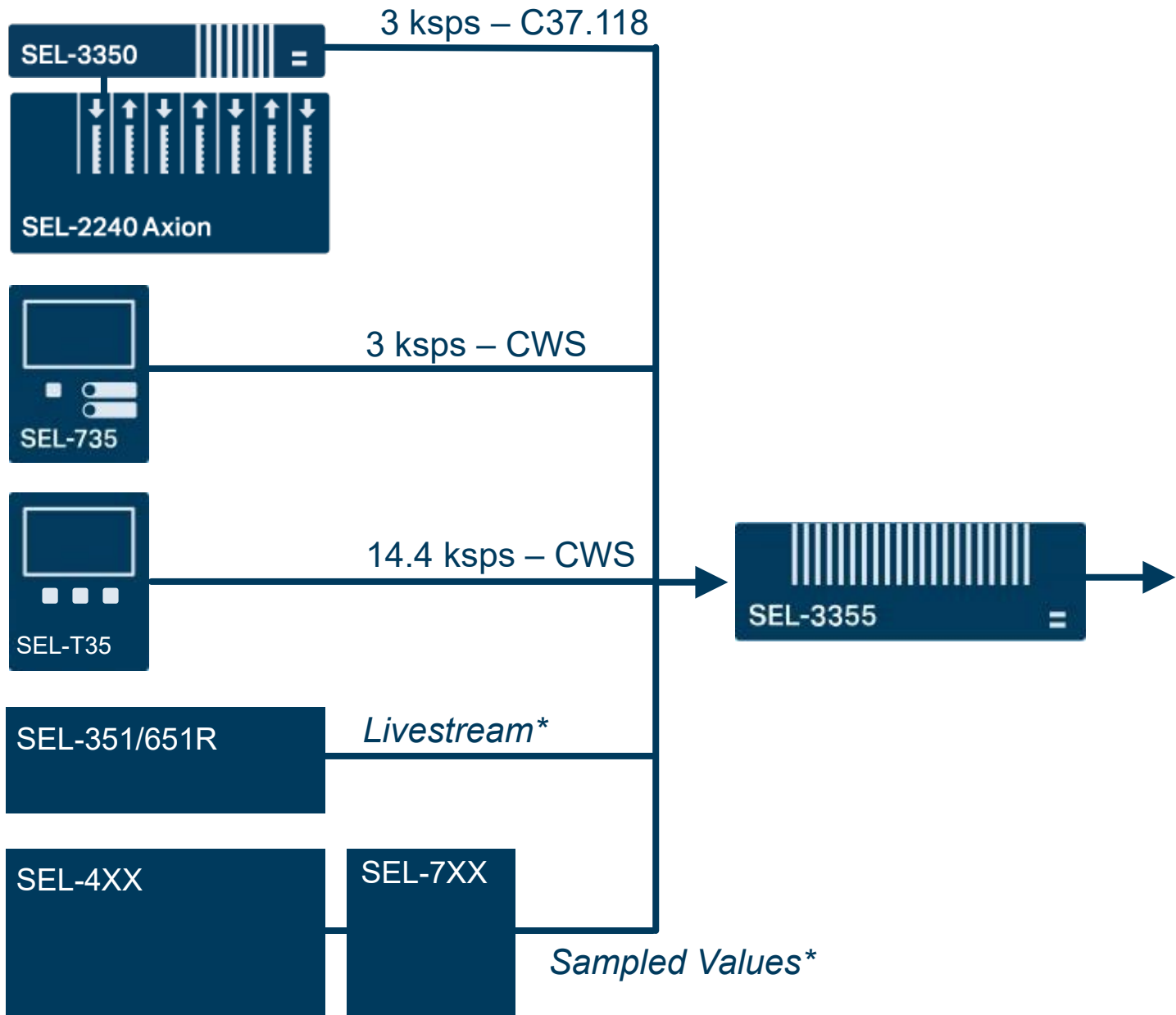


# Leverage a wealth of data from across your entire system

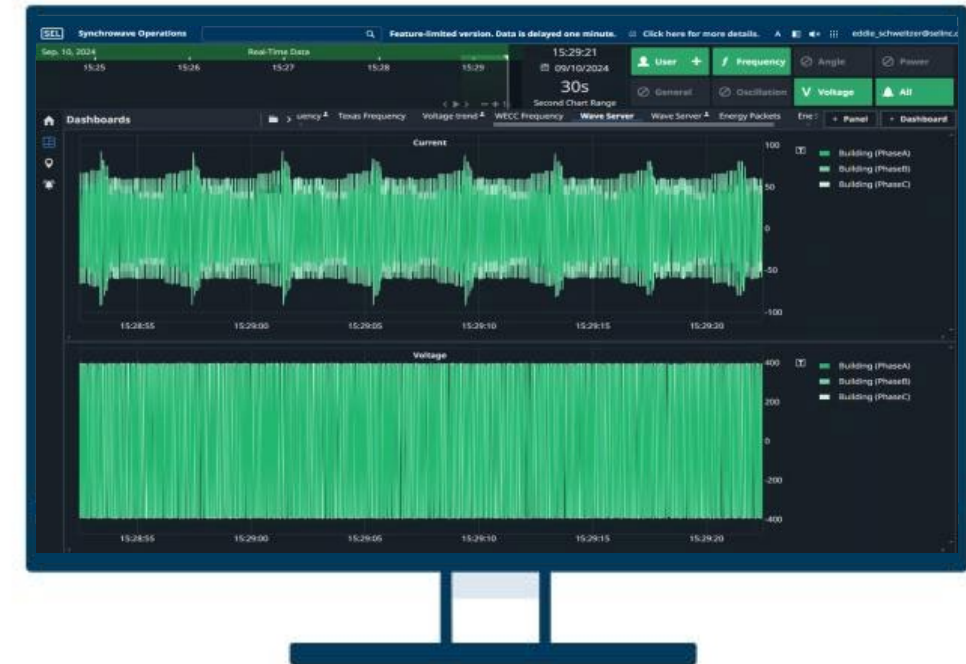


# Bringing Streaming and Triggers Together



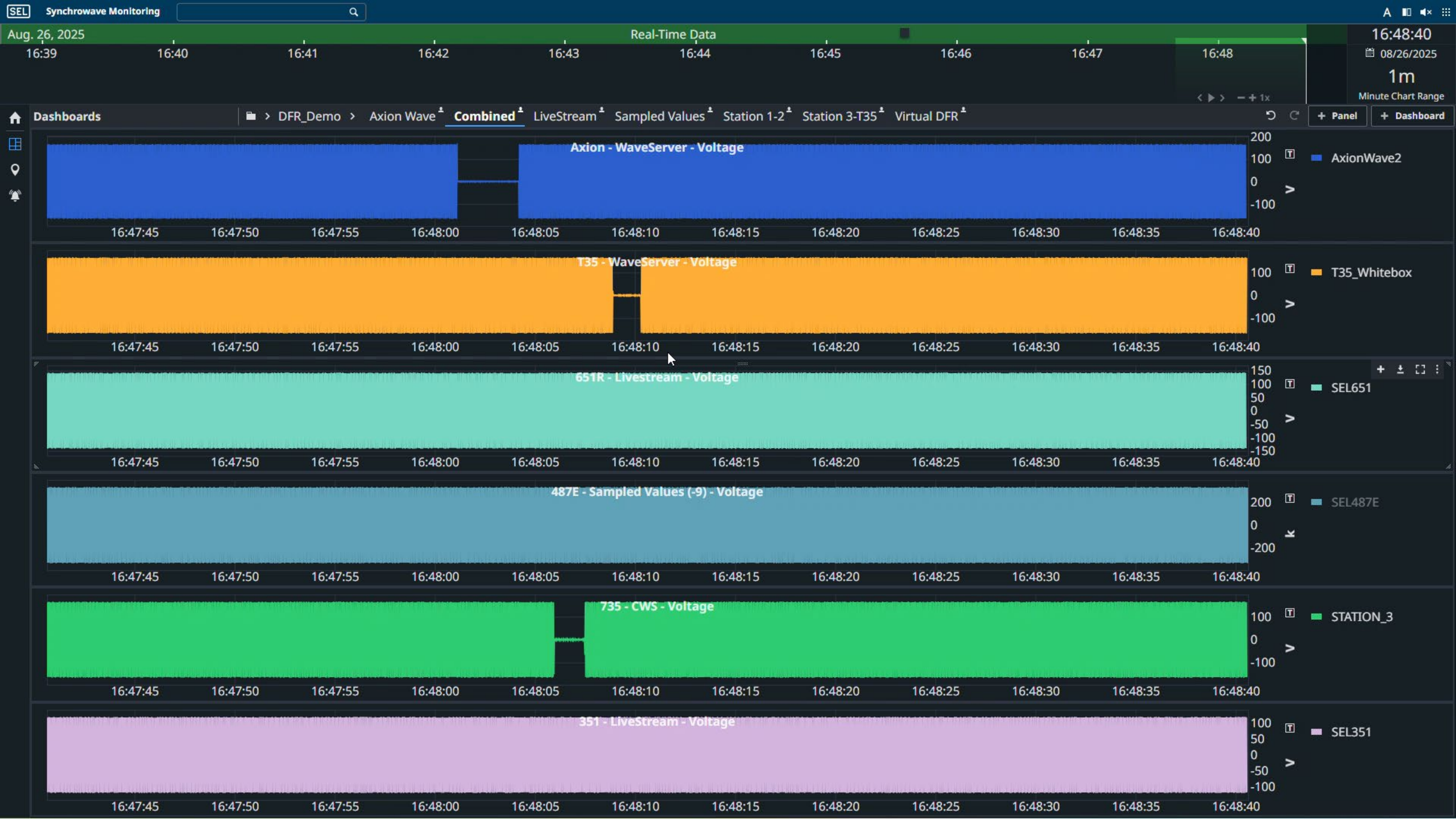


## Blueframe + Synchrowave



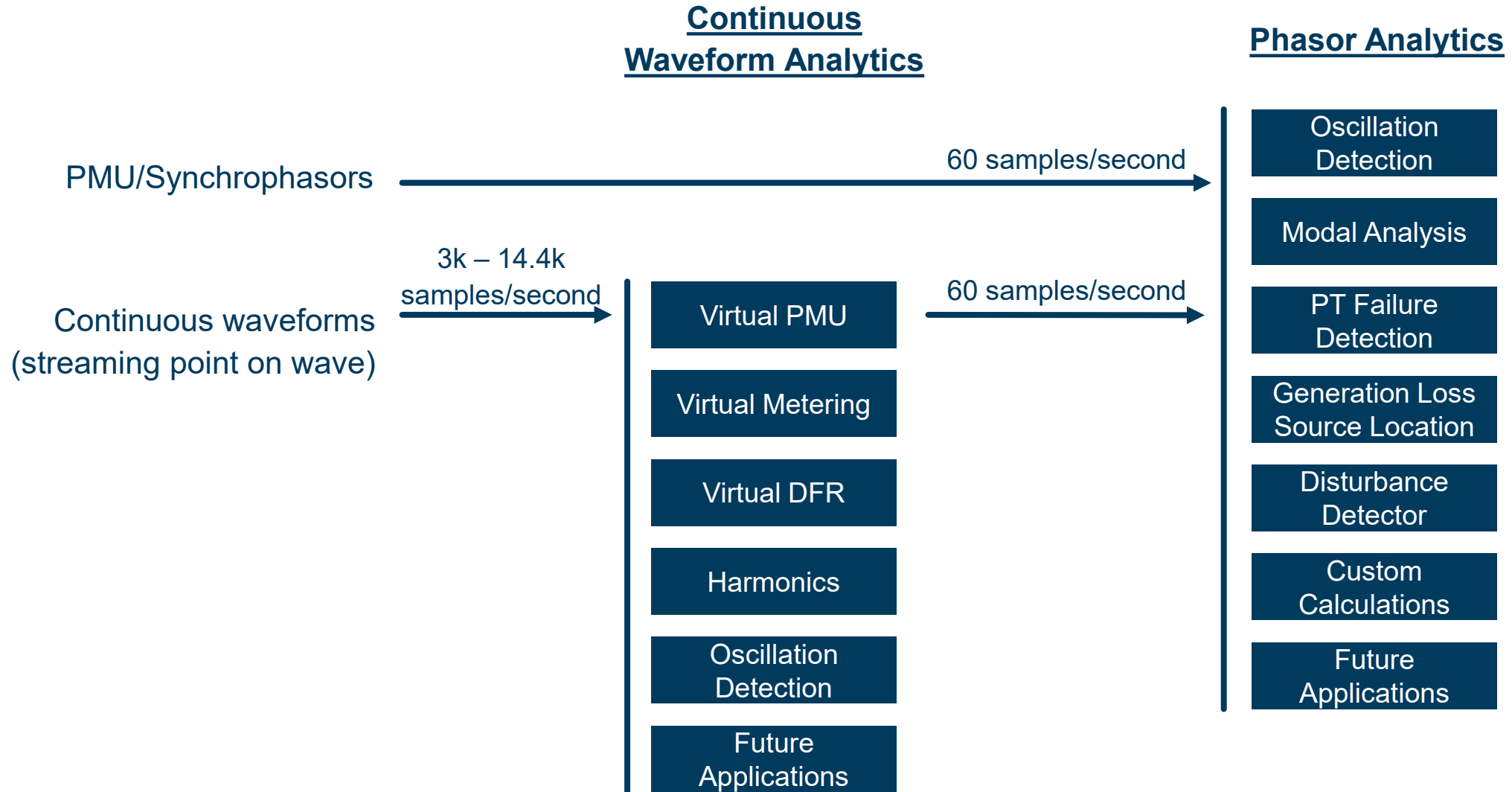
*\*Releasing Soon*



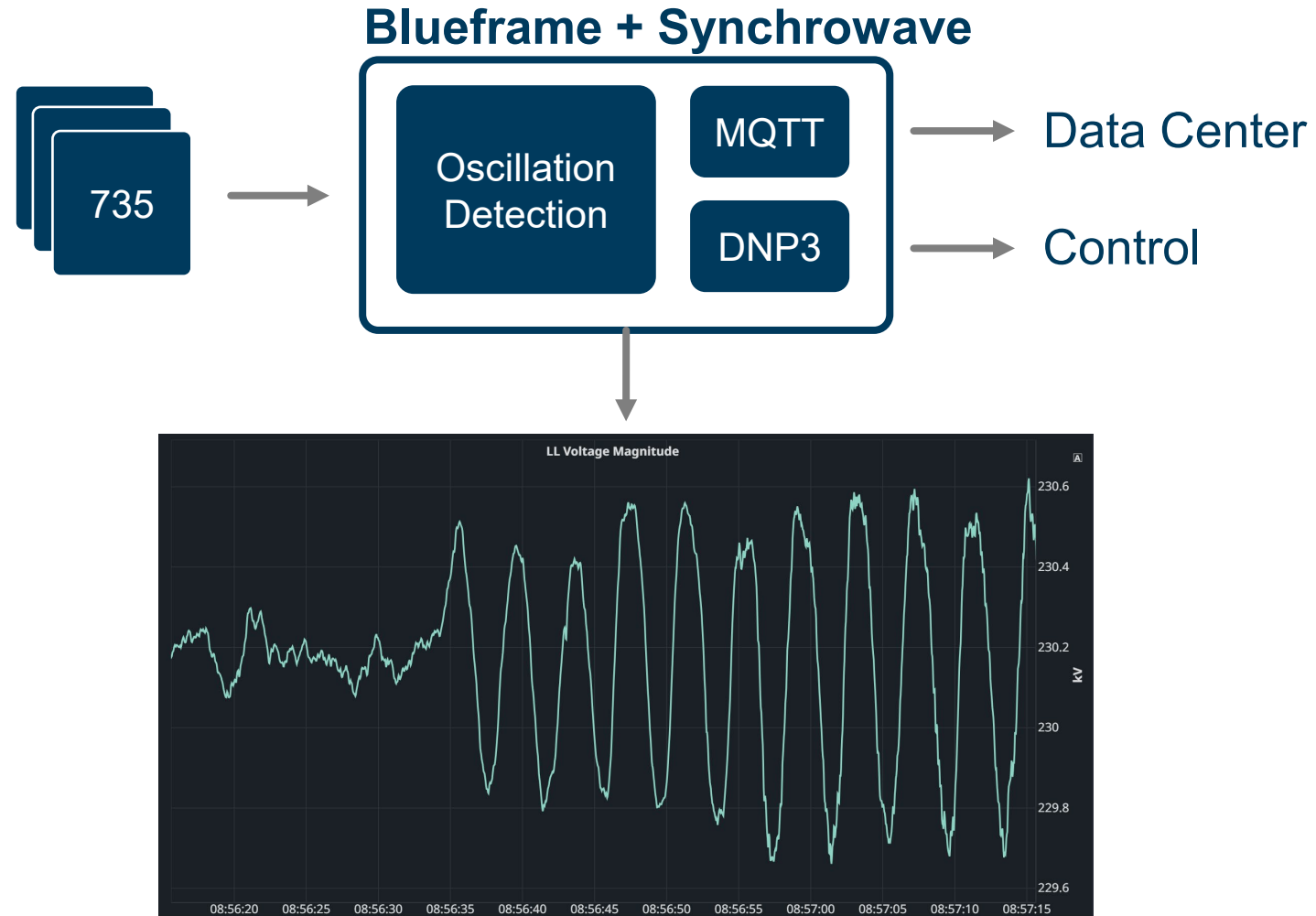




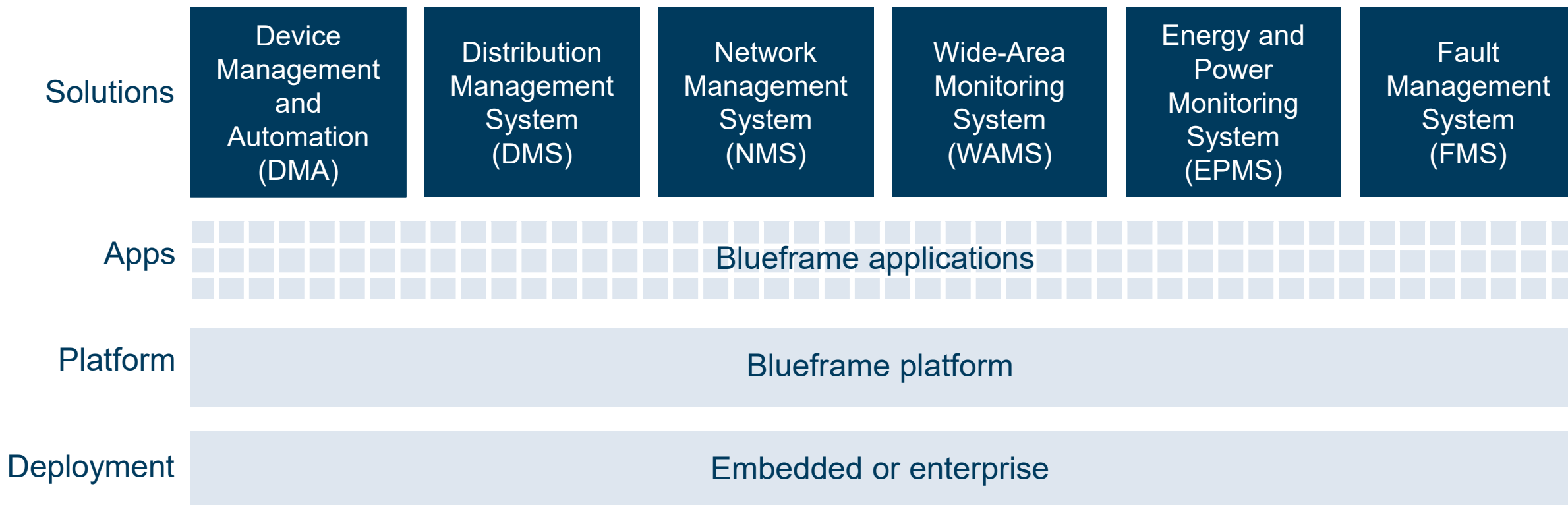
# Streaming Analytics



# Use Case: Monitoring and Detecting SSO



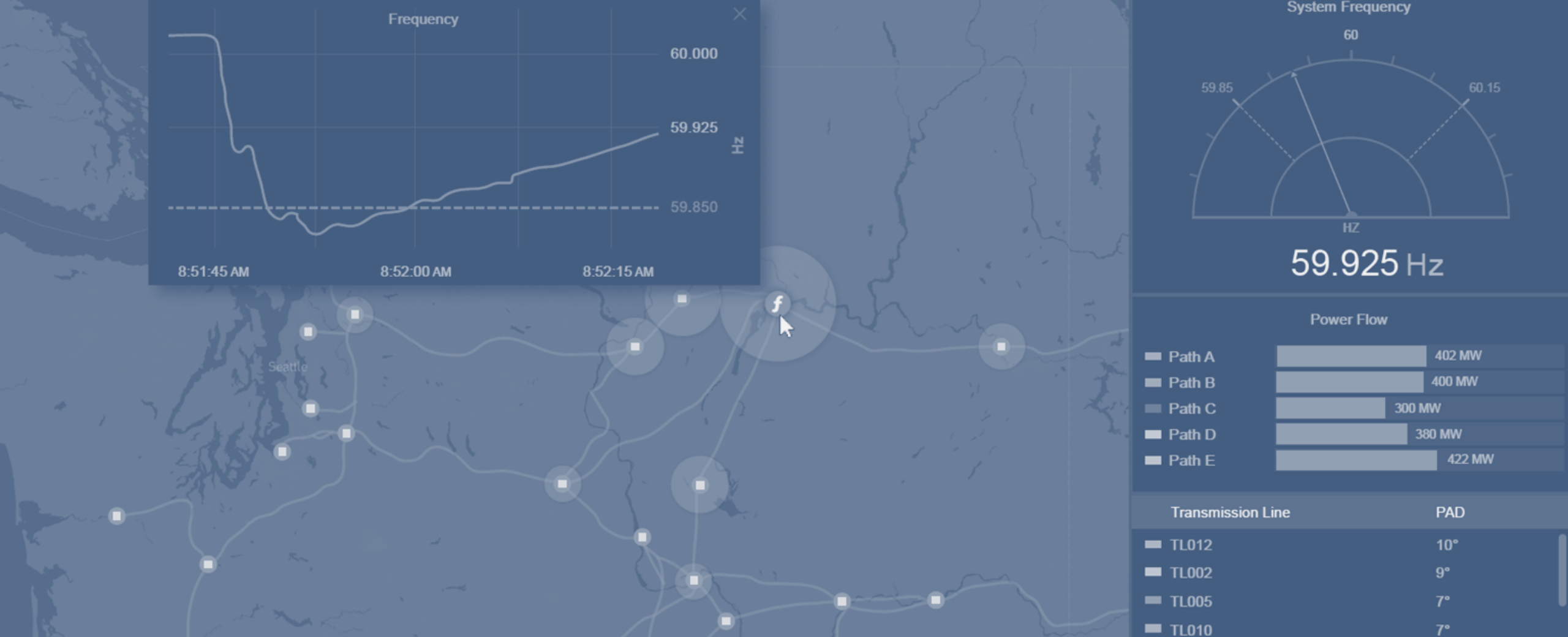
# Growing portfolio of software solutions



# Blueframe Introduction Video

[SEL Blueframe: Software Solutions for the Next-Generation Power System](#)





Connect with us

[info@selinc.com](mailto:info@selinc.com)



**SCHWEITZER  
ENGINEERING  
LABORATORIES**