

SPACE•TIME•INSIGHT



Situational Awareness & Wide Area Visualization

NASPI Conference - October 07, 2009

- **Company Overview**
- **Geospatial Visualization with Space-Time Insight**
- **Demo Video**
- **Q & A**

➤ **Locations:**

- Corporate HQ: Fremont, California, USA
- Regional HQ: Hong Kong, India
- Sales offices: Hong Kong, South Korea, throughout USA

➤ **Expertise: Geospatial Visualization, BI, Compliance, Systems Integration**

➤ **Member: Demand Response and Smart Grid Coalition (DRSG)**

➤ **Strong Partnerships:**



Awards won by Space-Time Insight Customers



2008 & 2009 Utilities Automation & Engineering Transmission & Distribution, GIS Projects of the Year

DistribuTech Awards for Crisis Management Solution

Space Time Insight Solutions:

Energy

- Field workforce Composite
- Severe Weather Crisis & Incident planning Composite
- Renewable Energy O & M Composite
- Smart Grid Visualization:
 - PMU
 - Demand Response

Chemical, Oil & Gas

- Intelligent Asset Infrastructure
- Severe Weather Crisis & Incident planning Composite
- Hydrocarbon Supply chain
 - Pipeline Leakage Monitoring

Transportation / Railroad

- Shunting
- Incident Mgmt
- Last Mile

Pharmaceutical

- Supply Network Planning
- Cold Supply Chain
- Demand Chain

Food & Beverages

- Supply Network Planning
- Cold Supply Chain
- Demand Chain

Space Time Insight Solutions:

Energy

- Field workforce Composite
- Severe Weather Crisis & Incident planning Composite
- Renewable Energy O & M Composite
- Smart Grid Visualization:
 - PMU
 - Demand Response

Chemical, Oil & Gas

- Intelligent Asset Infrastructure
- Severe Weather Crisis & Incident planning Composite
- Hydrocarbon Supply chain
- Pipeline Leakage Monitoring

Transportation / Railroad

- Shunting
- Incident Mgmt
- Last Mile

Pharmaceutical

- Supply Network Planning
- Cold Supply Chain
- Demand Chain

Food & Beverages

- Supply Network Planning
- Cold Supply Chain
- Demand Chain

Situational Awareness & Space-Time Insight

➤ True Situational Awareness

- Visualization to help operators easily identify variation of voltage magnitude, phase angle, load concentration, generator capacity throughout the system.
- Flexibility in visualization of data in layers, which can be checked & un-checked by user as needed. For example, PMU & SCADA data can be displayed with consideration of external factors such as temperature or severe weather (storm, hurricane, lightning)

➤ Situational Preparedness with Alerts & Drill-down ability

- Configurable Alerts for immediate action (visual & text)
- Drill down ability to pinpoint the trouble spot
- Integration with remediation schemes/incident workflow procedures

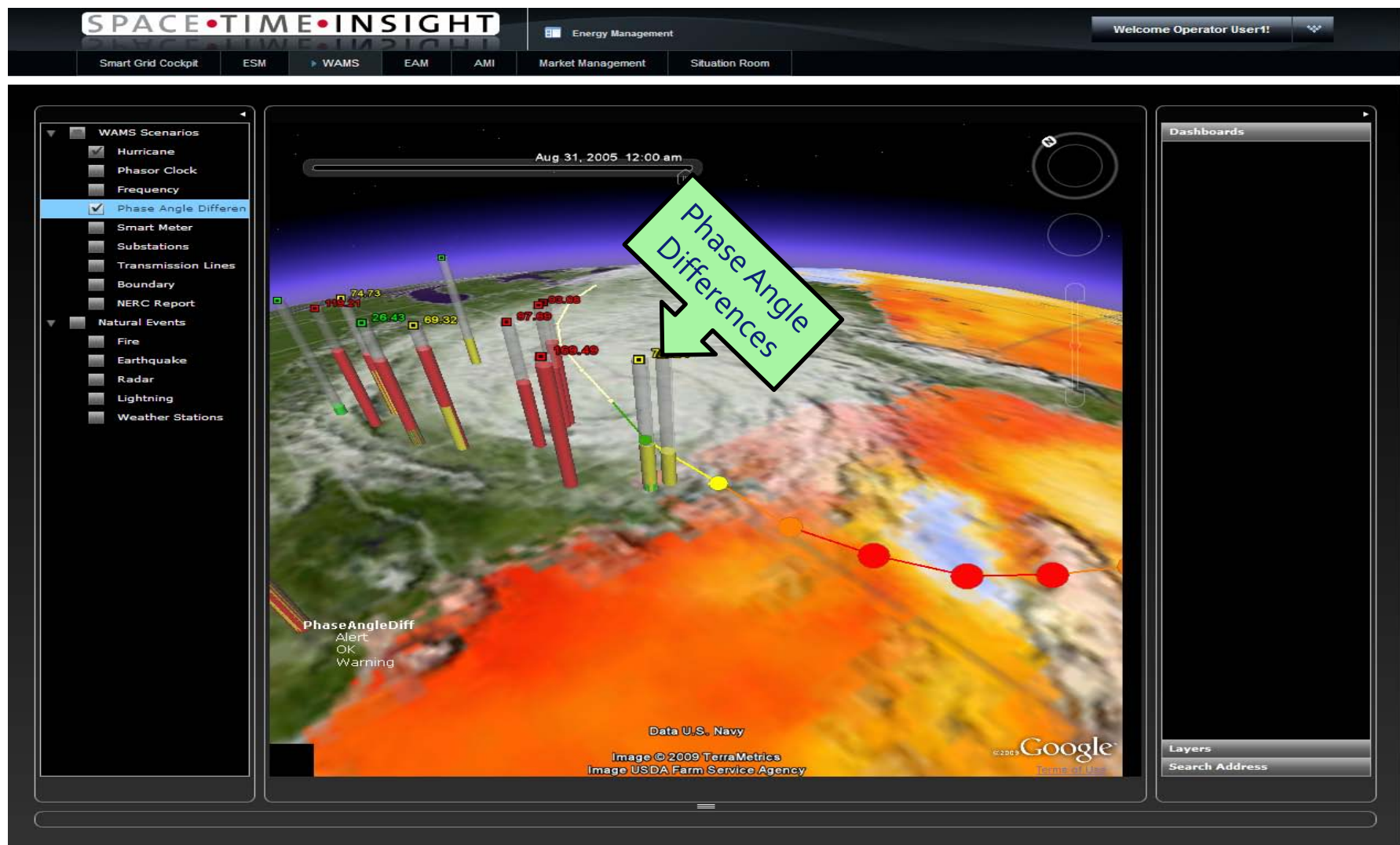
➤ Analysis

- Root cause temporal analysis & trending
- Ability to analyze events for post mortem assessment and best practices

➤ Integration & ease-of-use

- User friendly and easy to customize GUI
- Multi-panel displays, with dashboards, tables & charts
- Pluggable framework for multi-agency or multi-business unit collaboration

Situational Awareness Dashboard_ Sample Screen shot



Demo Video

Questions?

For more information:

www.spacetimeinsight.com

Contact information:

- **Barbara Servatius**
 - Sales/Business Development
 - barbara.servatius@spacetimeinsight.com
 - Mobile: 510.585.8333
- **Mozhi Habibi**
 - VP Product Management
 - mozhi.habibi@spacetimeinsight.com
 - Mobile 650.303.5552

